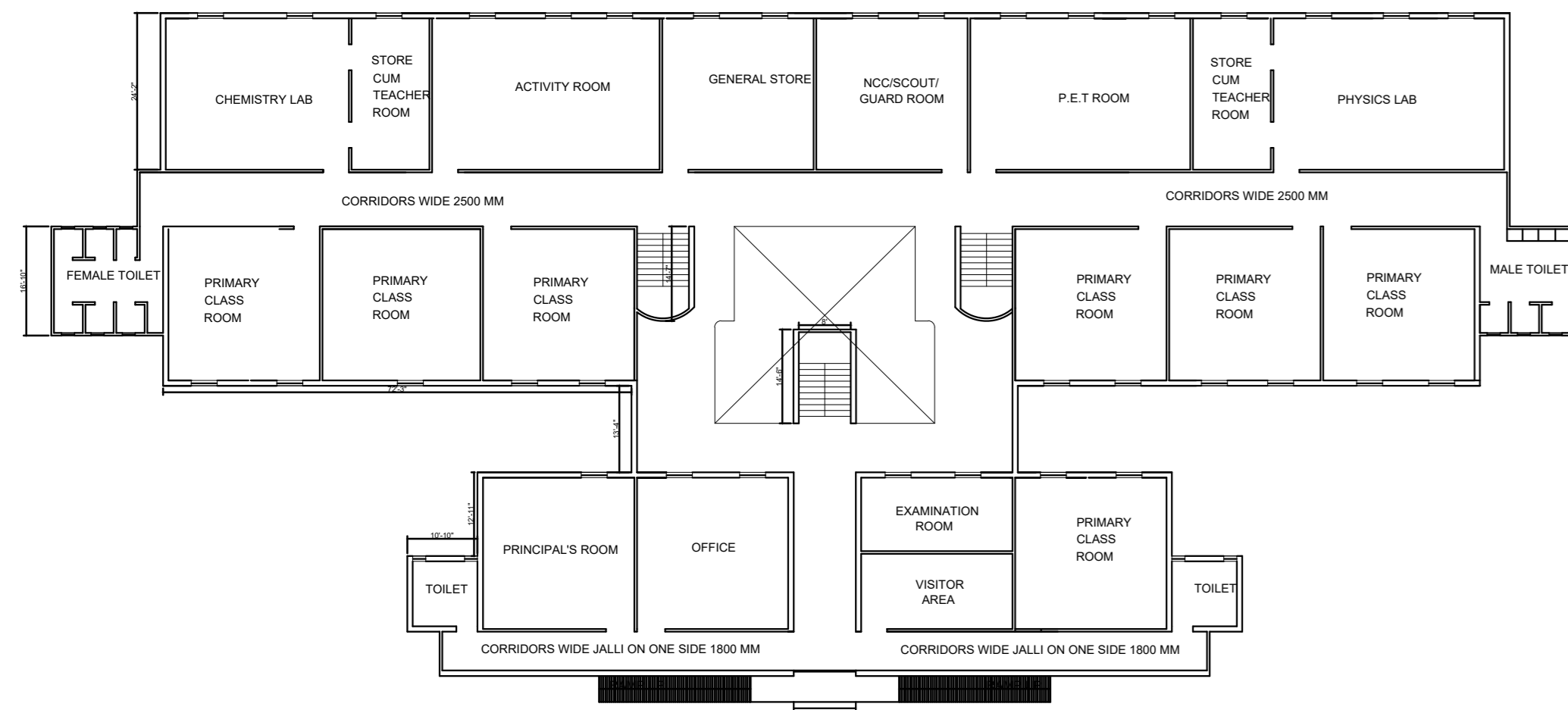
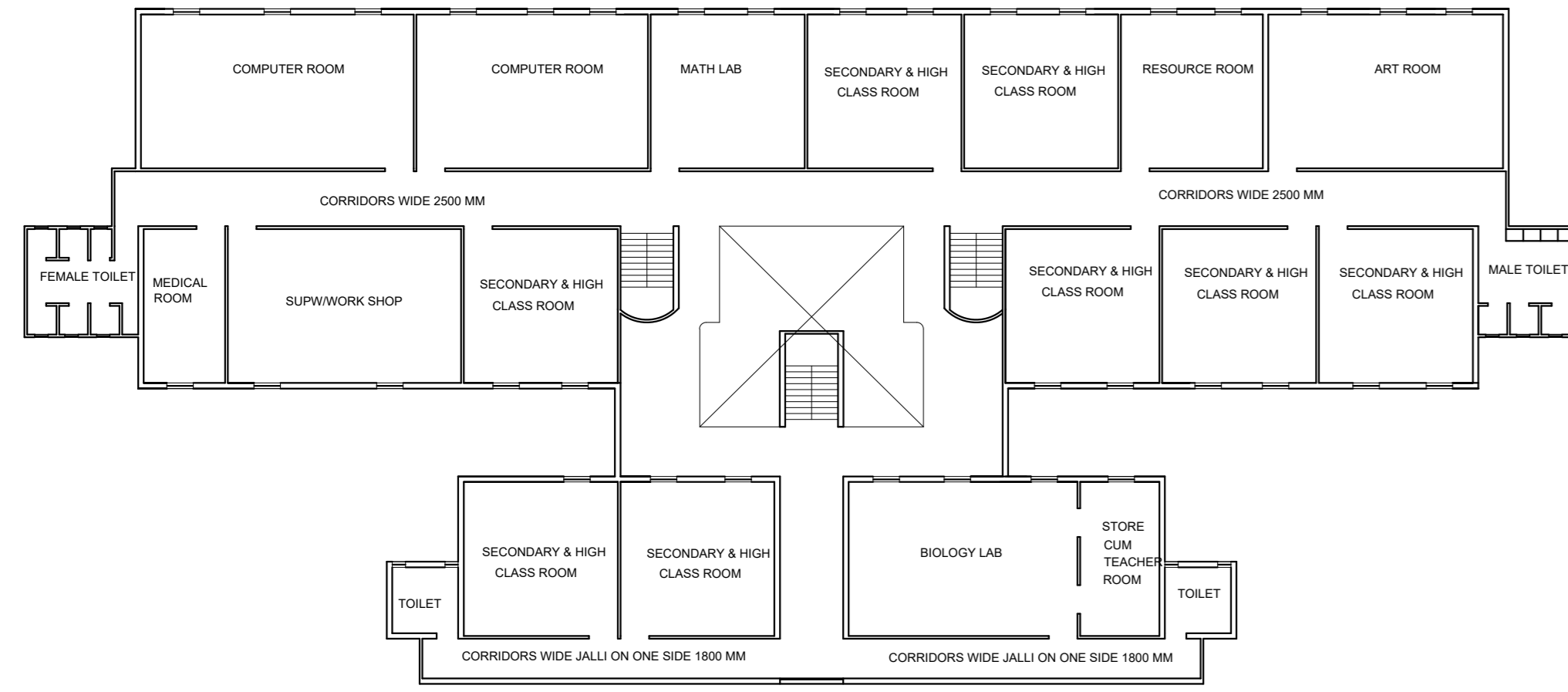


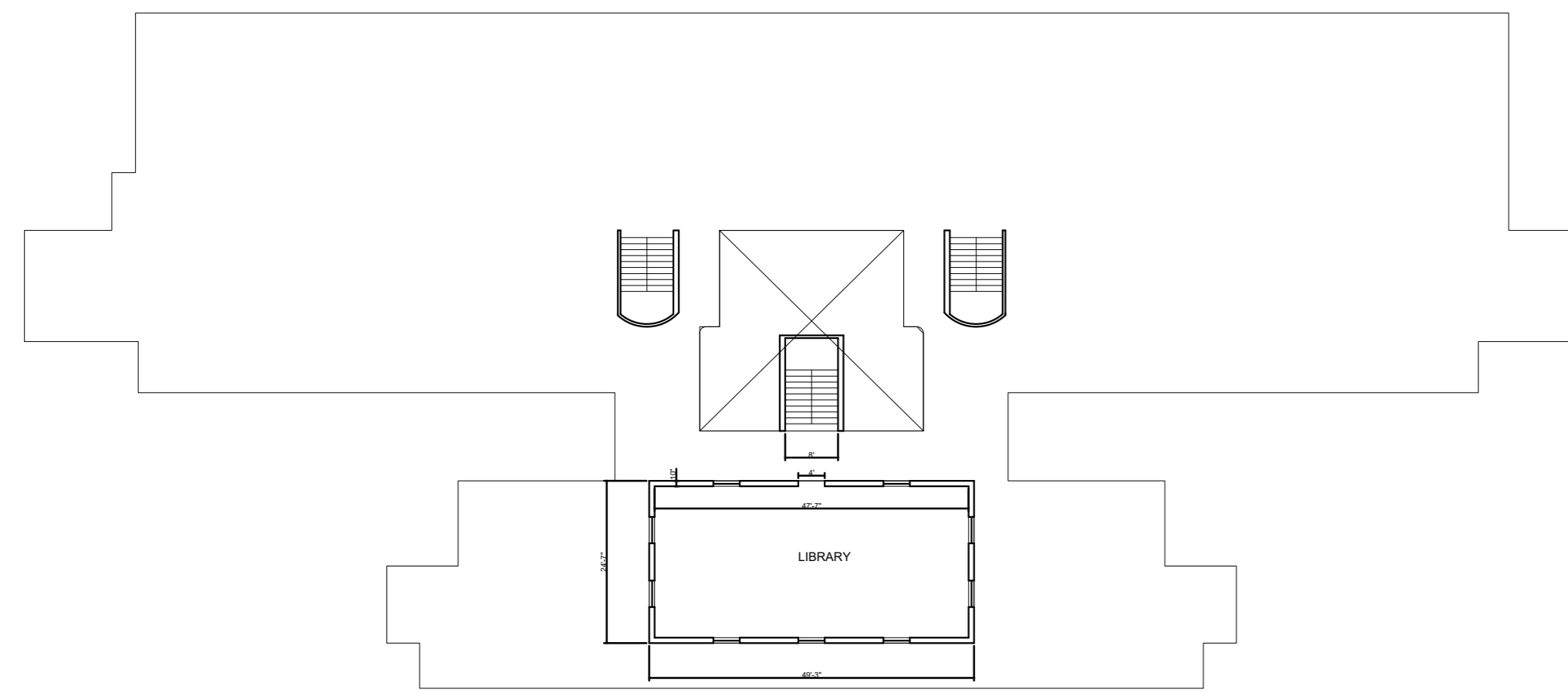
MODEL SCHOOL



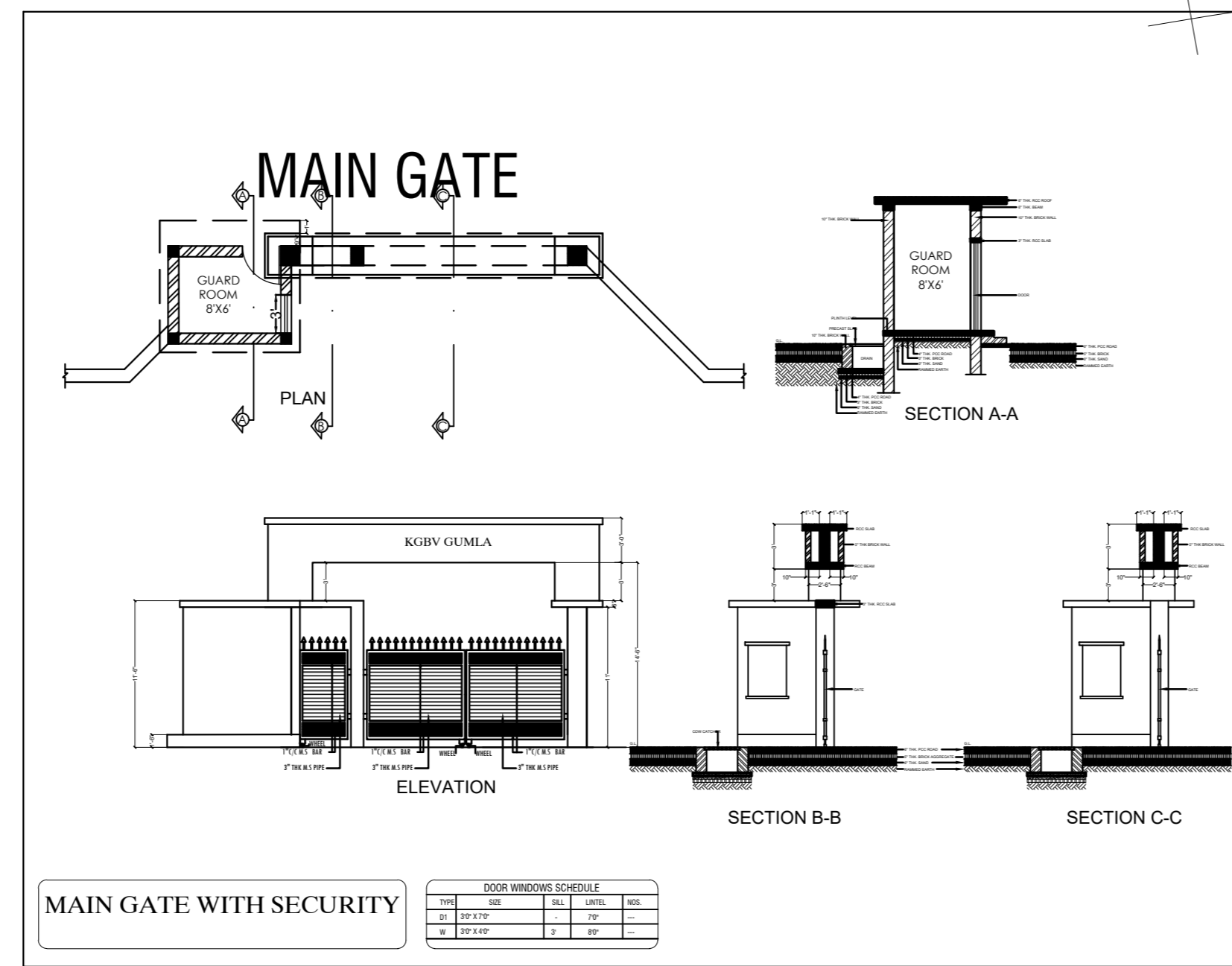
GROUND FLOOR PLAN



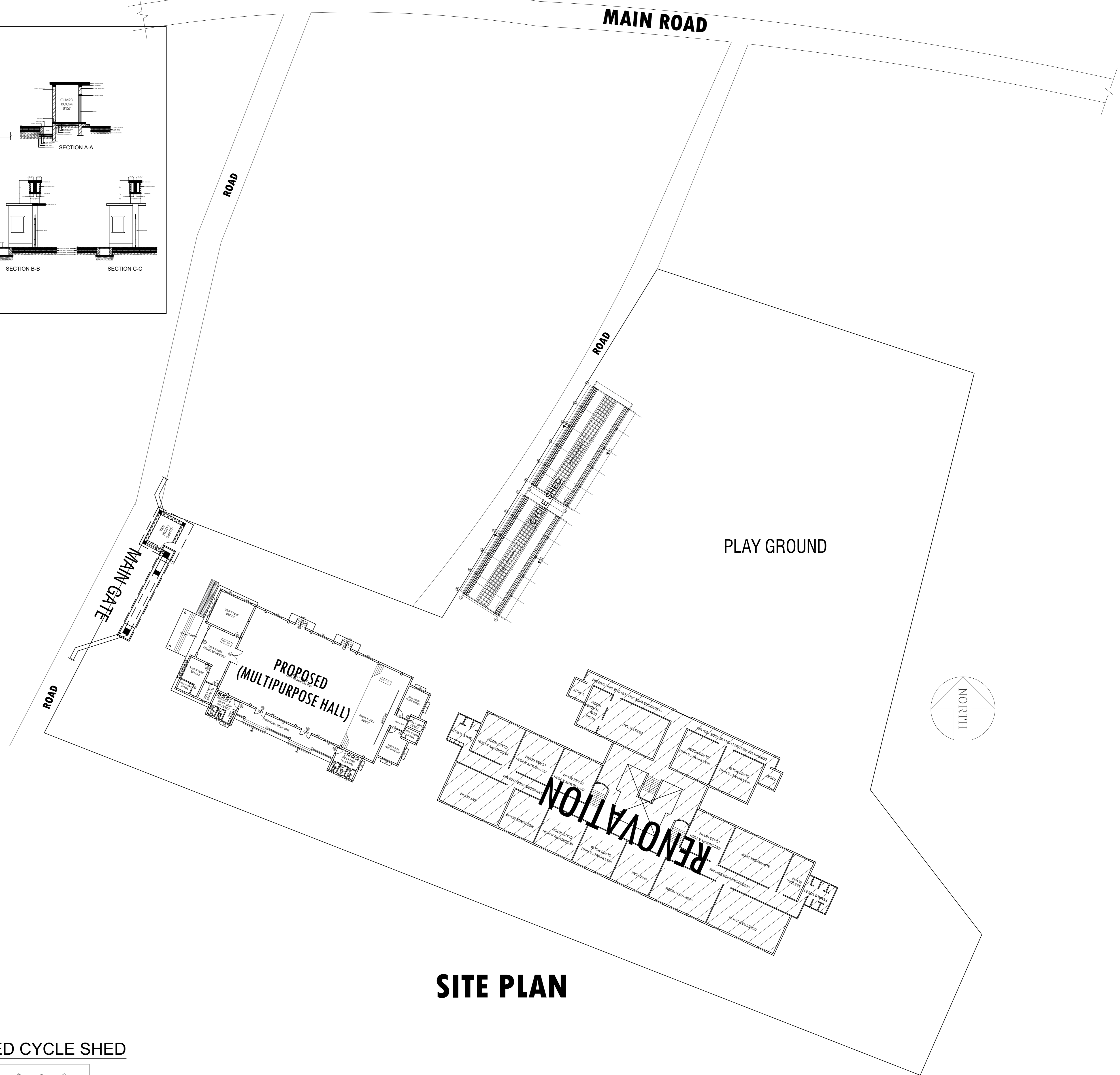
1st FLOOR PLAN



TERRACE PLAN

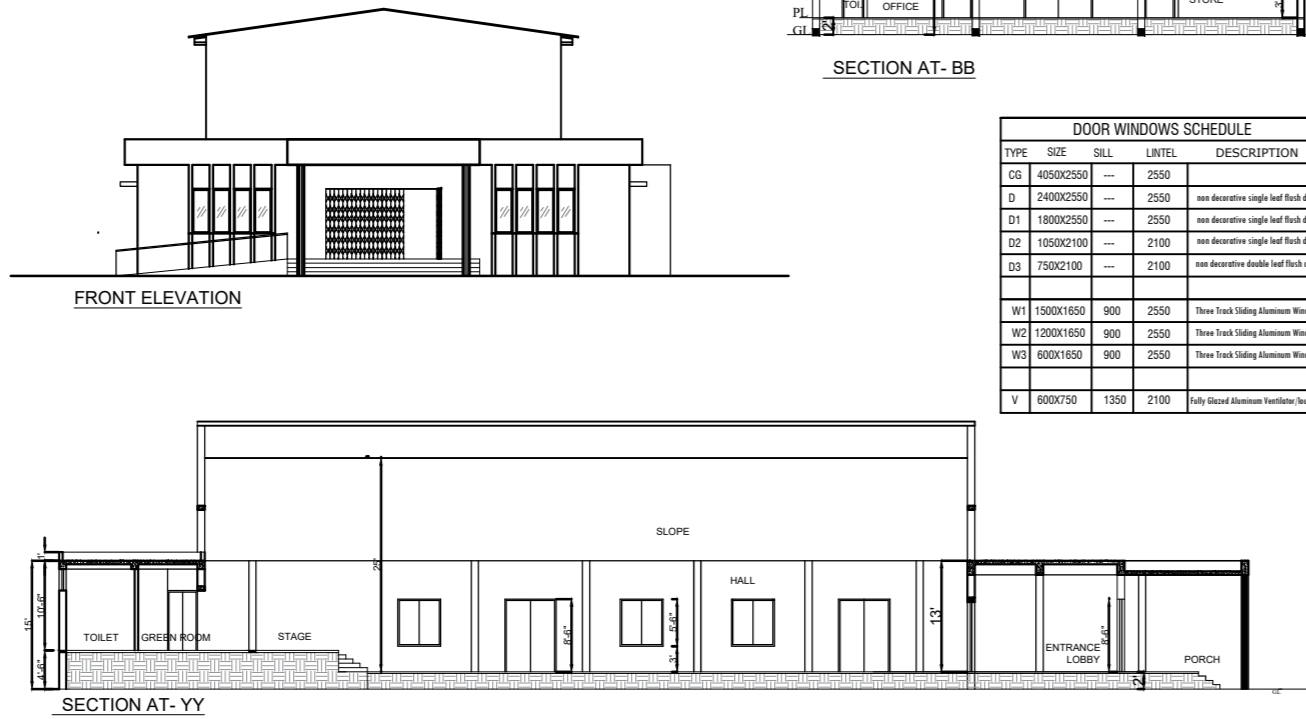
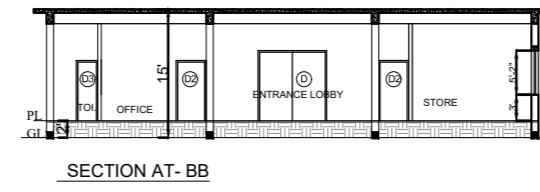
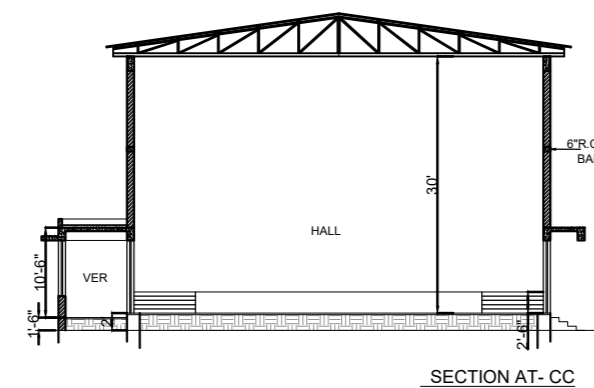
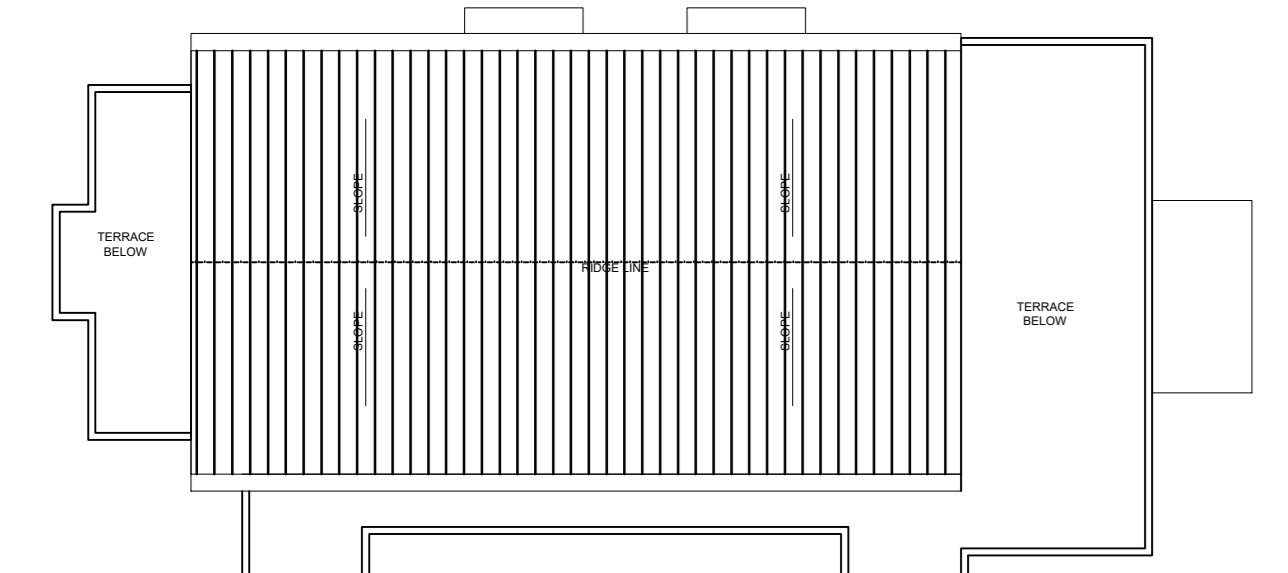


MAIN GATE WITH SECURITY



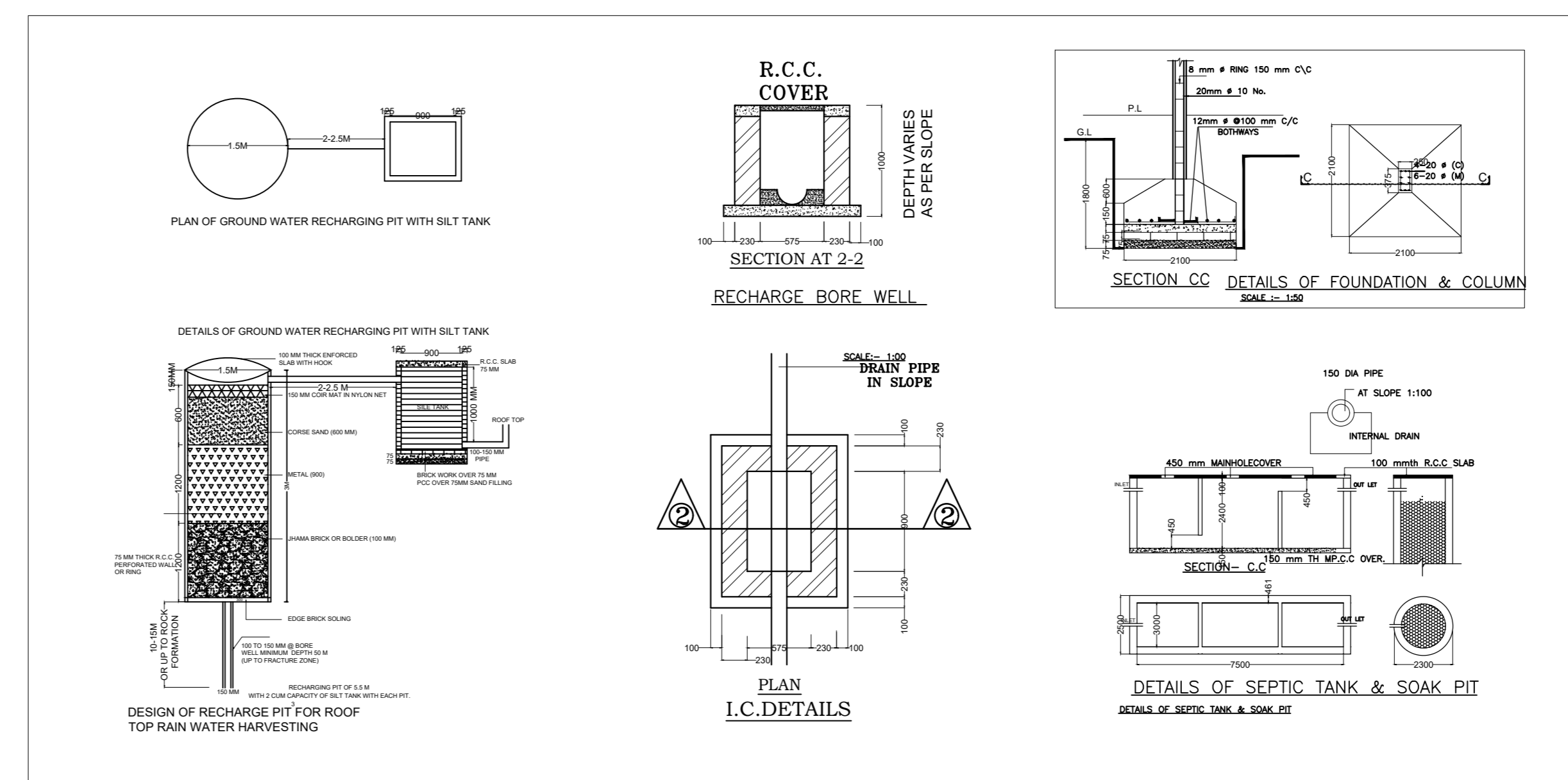
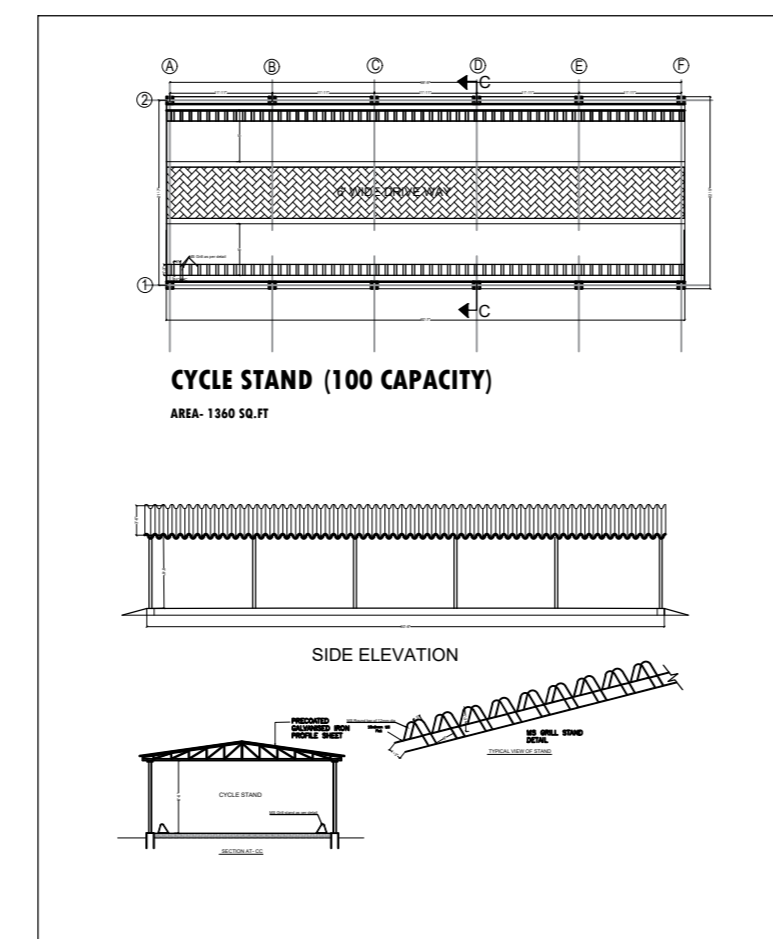
SITE PLAN

250 CAPACITY MULTIPURPOSE HALL



DOOR WINDOW SCHEDULE	
NO.	DESCRIPTION
1	DOOR
2	WINDOW
3	DOOR
4	WINDOW
5	DOOR
6	WINDOW
7	DOOR
8	WINDOW
9	DOOR
10	WINDOW
11	DOOR
12	WINDOW
13	DOOR
14	WINDOW
15	DOOR
16	WINDOW
17	DOOR
18	WINDOW
19	DOOR
20	WINDOW
21	DOOR
22	WINDOW
23	DOOR
24	WINDOW
25	DOOR
26	WINDOW
27	DOOR
28	WINDOW
29	DOOR
30	WINDOW
31	DOOR
32	WINDOW
33	DOOR
34	WINDOW
35	DOOR
36	WINDOW
37	DOOR
38	WINDOW
39	DOOR
40	WINDOW
41	DOOR
42	WINDOW
43	DOOR
44	WINDOW
45	DOOR
46	WINDOW
47	DOOR
48	WINDOW
49	DOOR
50	WINDOW

PROPOSED CYCLE SHED



CLIENT :	JEPC
PROJ. TITLE :	MODEL SCHOOL BARHI, HAZARIBAGH.
AT MAUJA - KHATA NO. - WARD NO. - JHARKHAND.	PLOT NO. - THANA NO. - DIST- HAZARIBAGH, JHARKHAND.
AREA CALCULATION	
PLOT AREA =	106372 SQFT (2.4 ACRE)
TOTAL BUILT UP AREA OF EXISTING MODEL SCHOOL	AREA- 35091 SQ. FT
TOTAL BUILT UP AREA OF 250 CAPACITY MULTIPURPOSE HALL	AREA- 7380 SQ. FT
TOTAL BUILT UP MAIN GATE	AREA- 197 SQ. FT
TOTAL BUILT UP CYCLE SHED	AREA- 1360 SQ. FT
TOTAL BUILT UP AREA-	44028 SQ. FT

