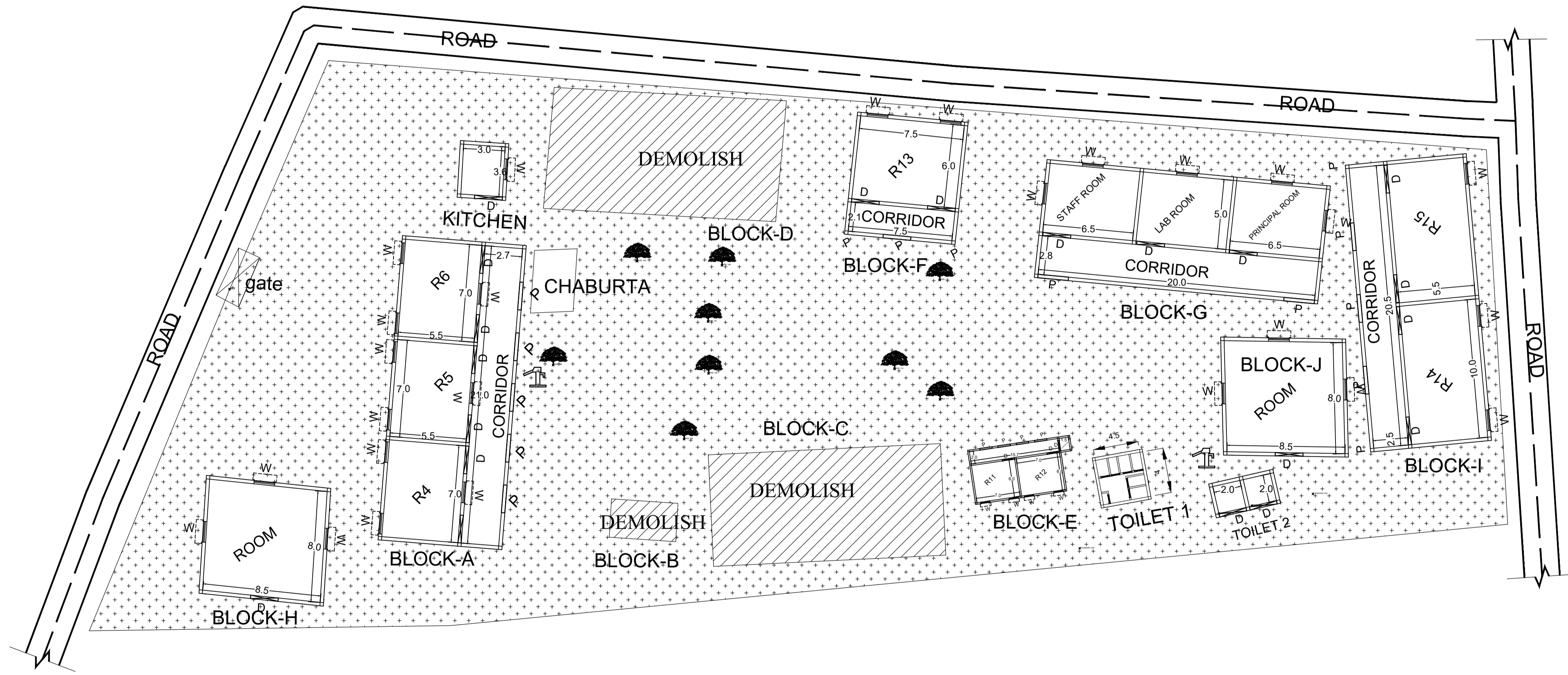
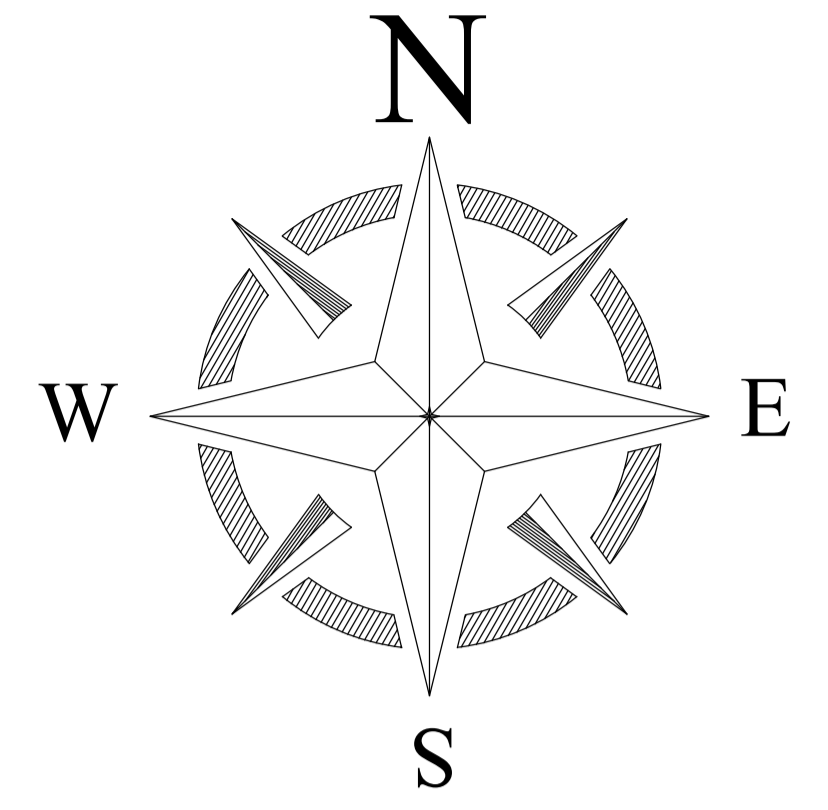



# PROPOSED SITE PLAN OF SCHOOL



BLOCK NO	BLOCK NAME	AREA(In m)	TYPE
1	BLOCK - A	404.0	G+1 FLOOR
2	BLOCK - B	125.3	G. FLOOR
3	BLOCK - C	134.8	G. FLOOR
4	BLOCK - D	146.3	G. FLOOR
5	BLOCK - E	133.4	G. FLOOR
6	BLOCK - F	70.8	G. FLOOR
7	BLOCK - G	175.2	G. FLOOR
8	BLOCK - H	76.5	G. FLOOR
9	BLOCK - I	181.5	G. FLOOR
10	BLOCK - J	76.5	G. FLOOR
11	TOILET-1	13.4	G. FLOOR
12	TOILET-2	11.8	G. FLOOR
13	DEMOLISH		

CONSULTANT :  
 MaRS Planning & Engineering Services Pvt. Ltd.  
 287/C Yash Padm Beside Hill Top Motors Ashok Nagar,  
 Ranchi- 834002, Jharkhand, India.  
[Jharkhand@marsconsultancy.com](mailto:Jharkhand@marsconsultancy.com)

TITLE : - UPG.H.S.PITIZ  
 BLOCK : ITKHORI  
 FORWARDED BY : MaRS