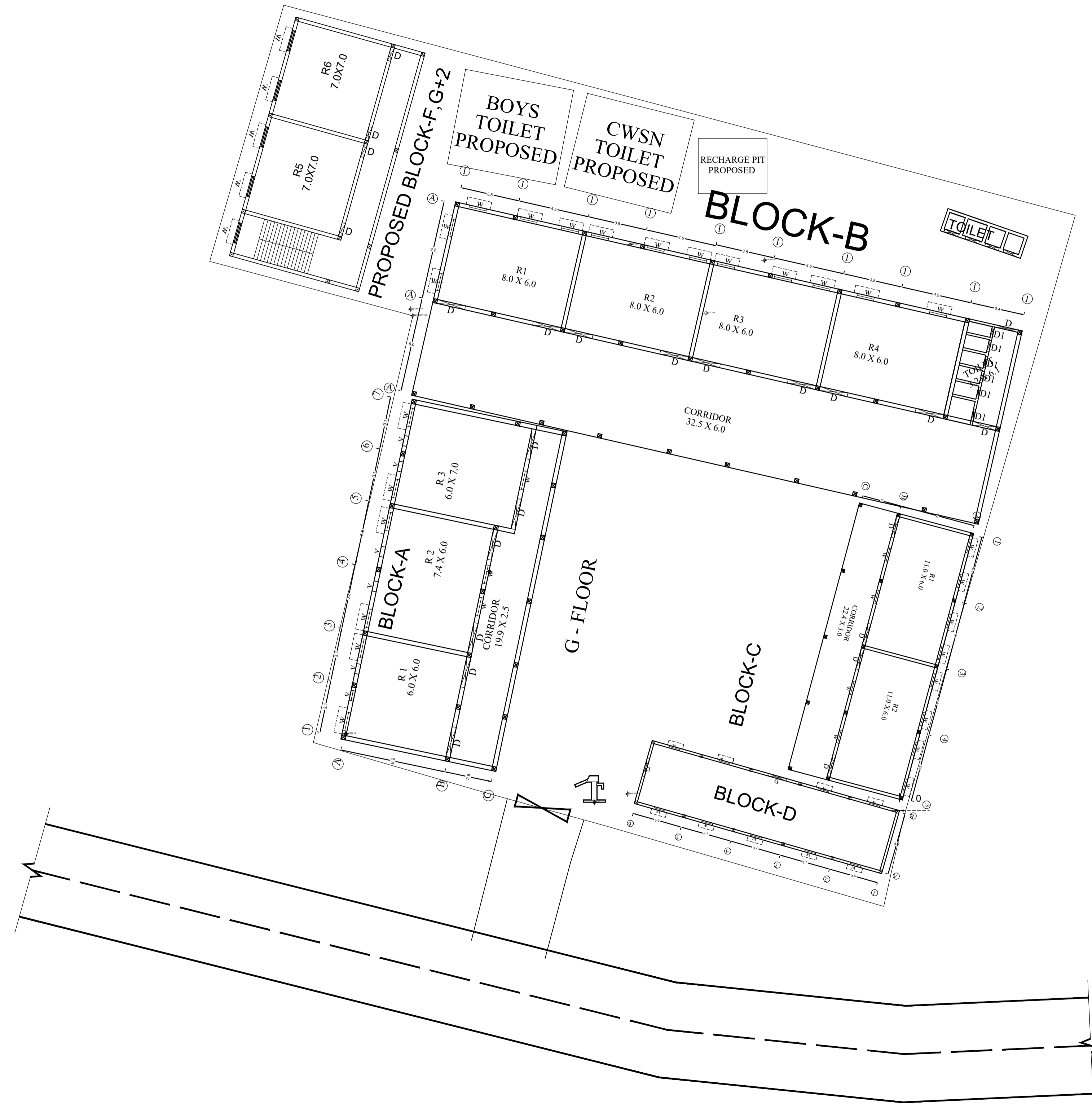
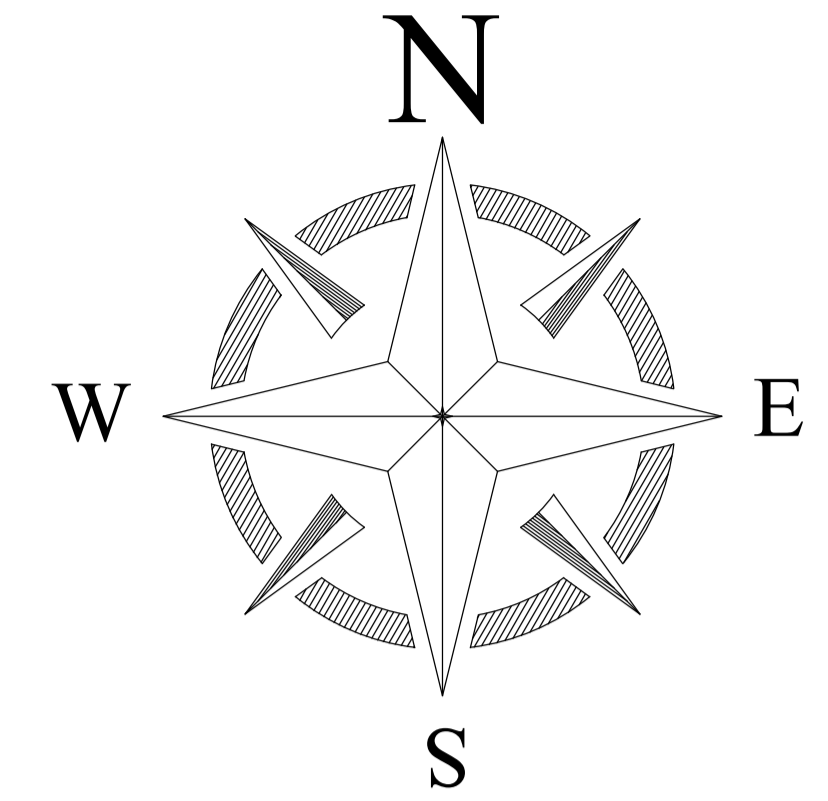


# PROPOSED SITE PLAN OF SCHOOL



BLOCK NO	BLOCK NAME	AREA(In m)	TYPE
1	BLOCK - A	290.5	G +1 FLOOR
2	BLOCK - B	609.3	G+1 FLOOR
3	BLOCK - C	172.4	G. FLOOR
4	BLOCK - D	89.1	G. FLOOR
5	BLOCK - E	236.0	G+1 FLOOR
6	TOILET	2565.6	G. FLOOR

CONSULTANT : **MaRS** Planning & Engineering Services Pvt. Ltd.  
 287/C Yash Padm Beside Hill Top Motors Ashok Nagar,  
 Ranchi- 834002, Jharkhand, India.  
[Jharkhand@marsconsultancy.com](mailto:Jharkhand@marsconsultancy.com)

TITLE : - RAJYA SAMPOSIT GIRLS HIGH SCHOOL  
 BLOCK : CHATRA  
 FORWARDED BY : MaRS