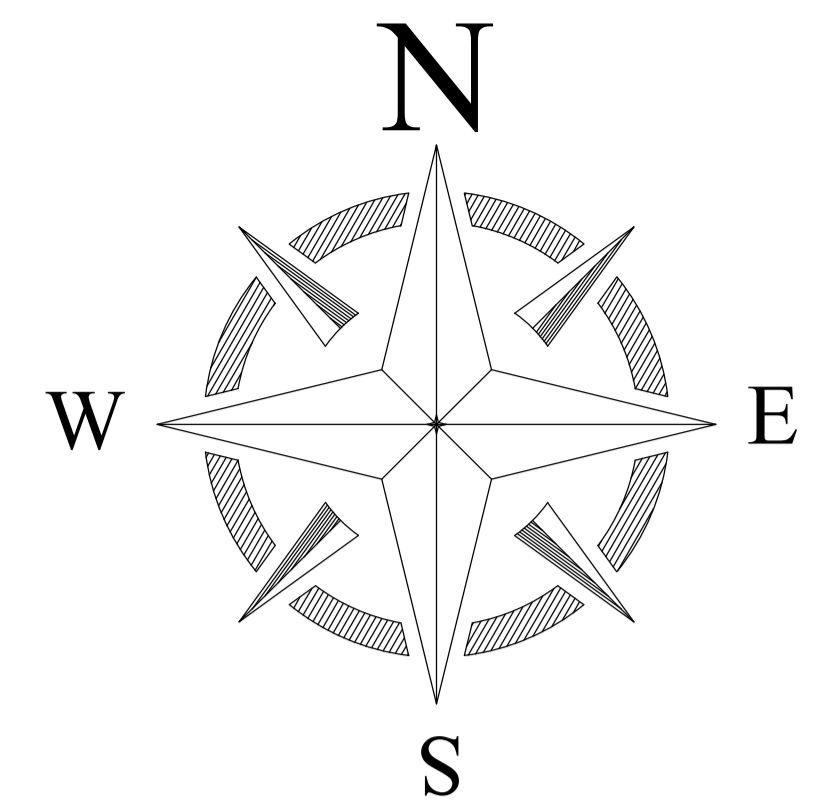
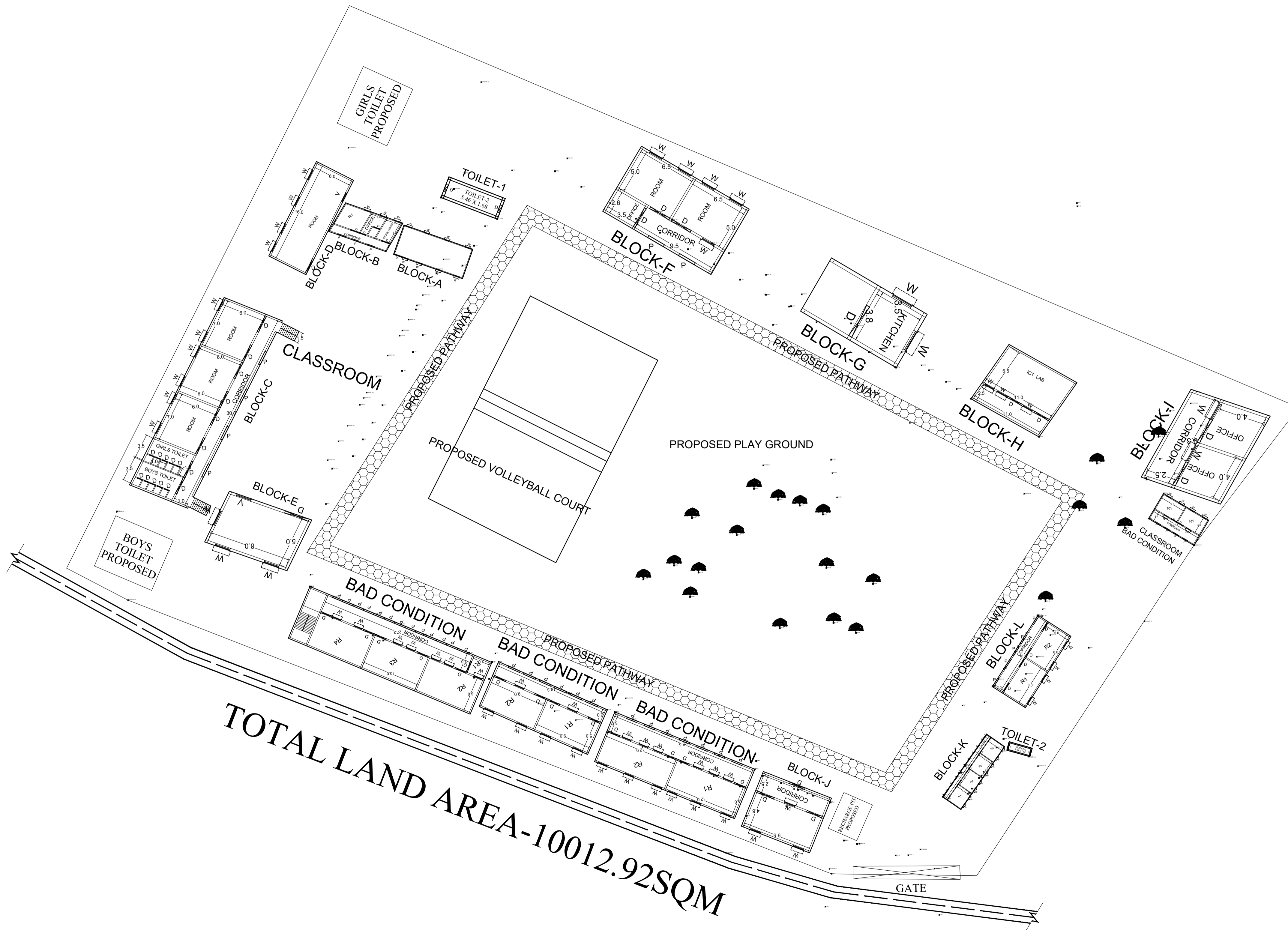


PROPOSED SITE PLAN OF SCHOOL



LEGENDS

BLOCK NO	BLOCK NAME	AREA(In SQM)	TYPE
1	BLOCK - A	432.00	G+1
2	BLOCK - B	321.18	G+1
3	BLOCK - C	530.26	G+1
4	BLOCK - D	214.5	G+1
5	BLOCK - E	94.14	G+1
6	BLOCK - F	114.81	G. FLOOR
7	BLOCK-G	33.46	G. FLOOR
8	BLOCK-H	112.66	G. FLOOR
9	BLOCK-I	64.59	G. FLOOR
10	BLOCK-J	80.50	G. FLOOR
11	BLOCK-K	320.86	G. FLOOR
12	BLOCK-L	129.90	G. FLOOR
13	TOILET-1	13.00	G. FLOOR
14	TOILET-2	13.00	G. FLOOR



TOTAL LAND AREA-10012.92SQM

CONSULTANT :



MaRS Planning & Engineering Services Pvt. Ltd.
 287/C Yash Padm Beside Hill Top Motors Ashok Nagar,
 Ranchi- 834002, Jharkhand, India.
Jharkhand@marsconsultancy.com

TITLE : - S. S. +2 HIGH SCHOOL, TANDWA

BLOCK : TANDWA

FORWARDED BY : MaRS