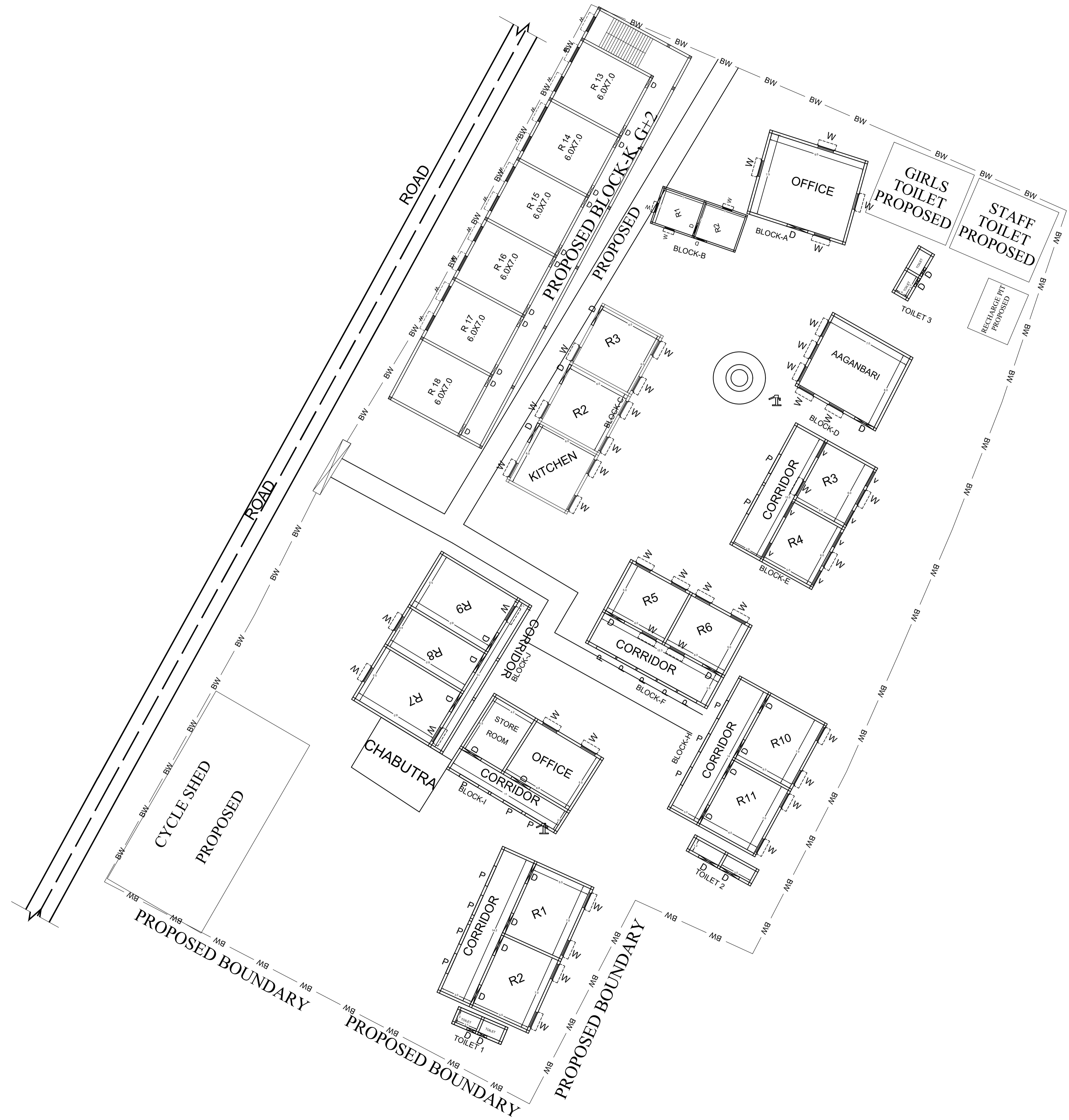
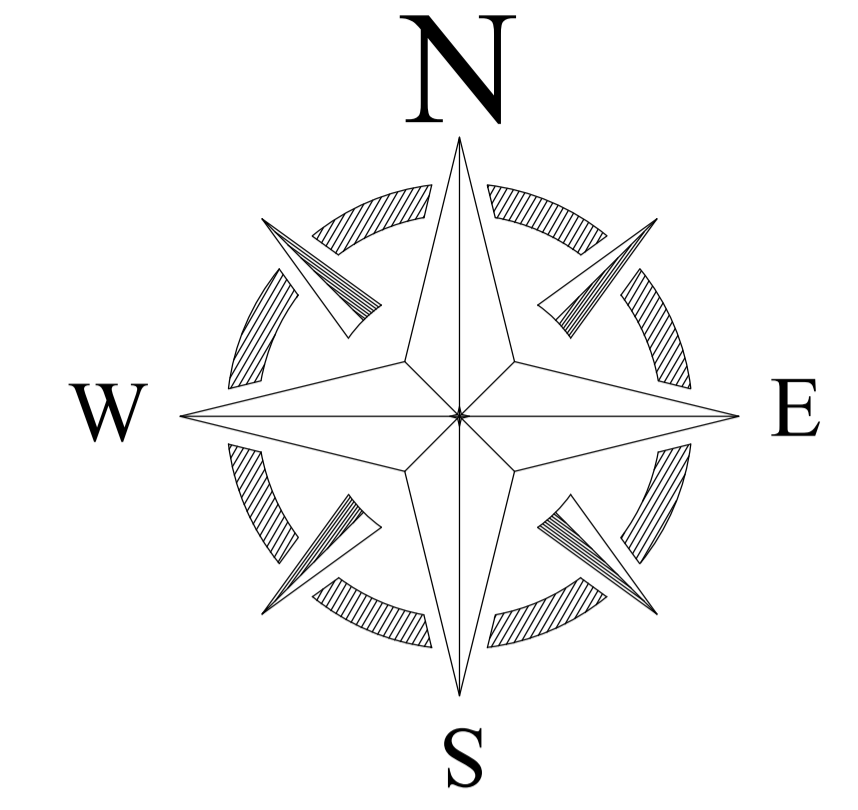


# PROPOSED SITE PLAN OF SCHOOL



BLOCK NO	BLOCK NAME	AREA(In m)	TYPE
1	BLOCK - A	76.0	G. FLOOR
2	BLOCK - B	29.7	G. FLOOR
3	BLOCK - C	123.5	G. FLOOR
4	BLOCK - D	64.6	G. FLOOR
5	BLOCK - E	110.2	G. FLOOR
6	BLOCK - F	111.5	G. FLOOR
7	BLOCK - G	155.9	G. FLOOR
8	BLOCK - H	128.7	G. FLOOR
9	BLOCK - I	96.9	G. FLOOR
10	BLOCK - J	136.4	G. FLOOR
11	TOILET 1	8.4	G. FLOOR
12	TOILET 2	11.4	G. FLOOR
13	TOILET 3	8.4	G. FLOOR

SECOND FLOOR

TOTAL LAND AREA-3308.2 SQM

CONSULTANT : **MaRS** Planning & Engineering Services Pvt. Ltd.  
 287/C Yash Padm Beside Hill Top Motors Ashok Nagar,  
 Ranchi- 834002, Jharkhand, India.  
[Jharkhand@marsconsultancy.com](mailto:Jharkhand@marsconsultancy.com)

TITLE : - U.H.S.PELTAUL KALAN  
 BLOCK : KANHACHATTI  
 FORWARDED BY : MaRS