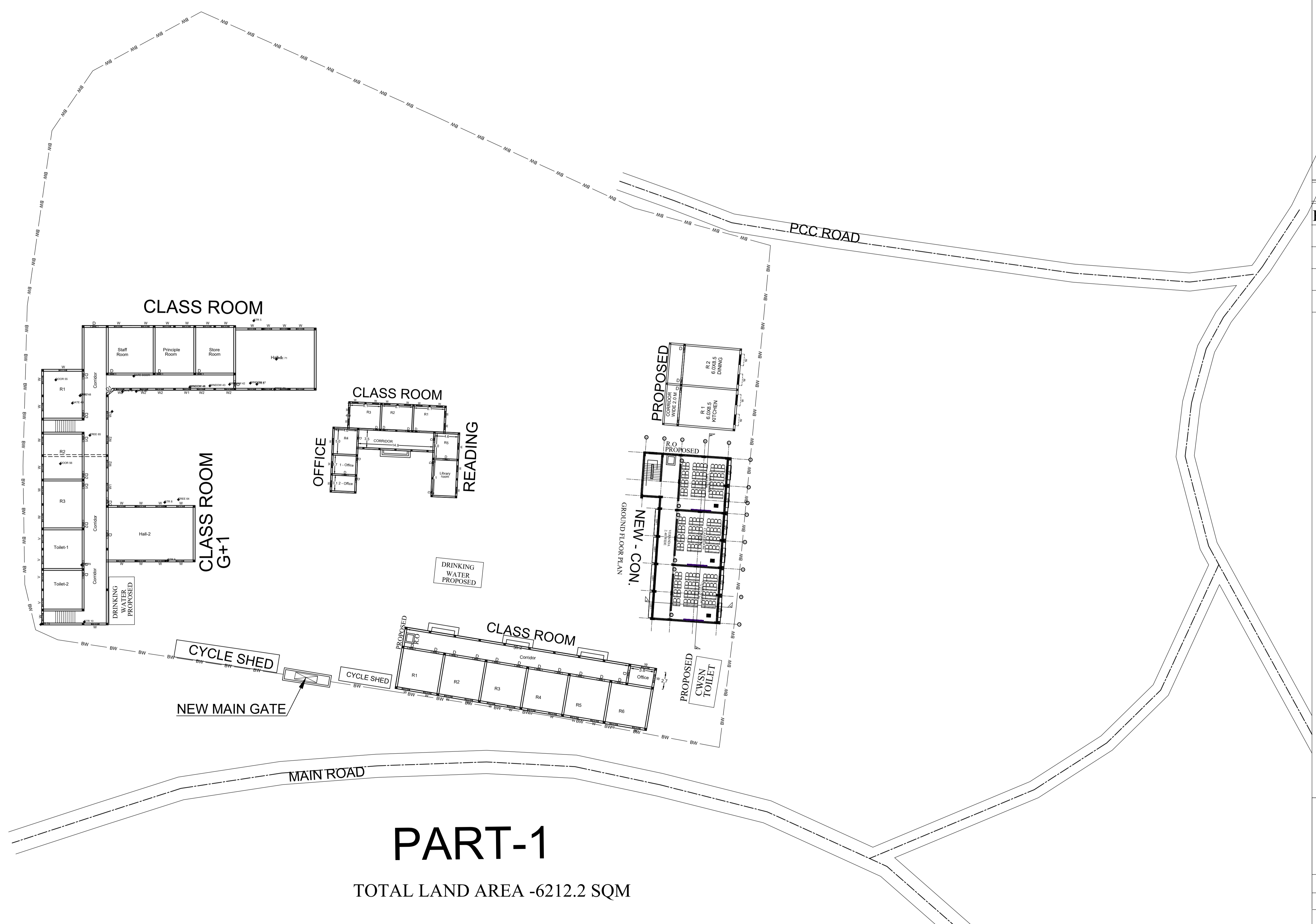
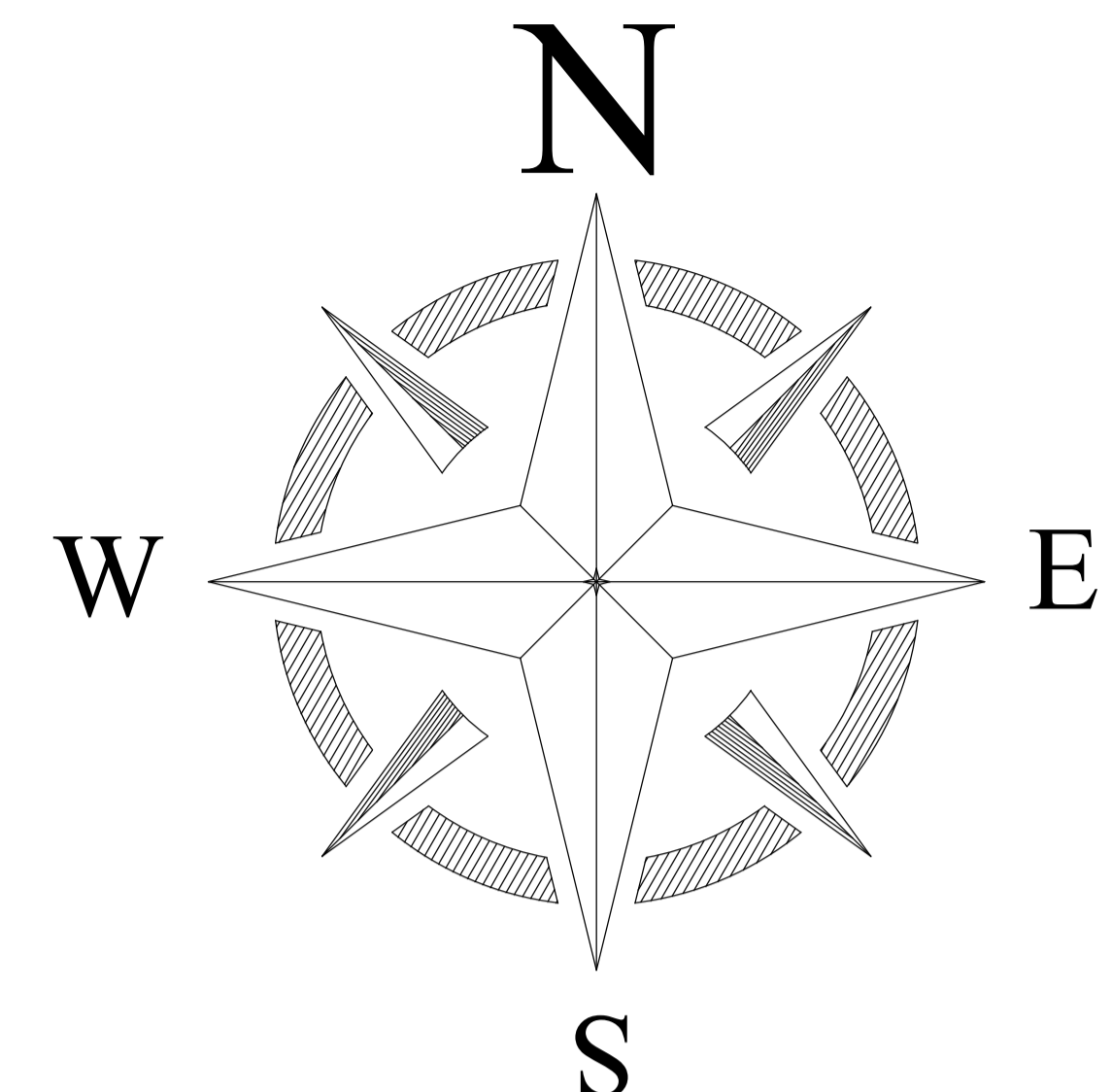


# PROPOSED SITE PLAN OF SCHOOL



## LEGENDS

| BLOCK NO | BLOCK NAME | AREA(In m) | TYPE     |
|----------|------------|------------|----------|
| 1        | BLOCK - A  | 902.7      | G. FLOOR |
| 2        | BLOCK - B  | 390.4      | G. FLOOR |
| 3        | BLOCK - C  | 297.8      | G. FLOOR |
| 4        | TOILET-1   | 35.9       | G. FLOOR |

## PART-1

TOTAL LAND AREA -6212.2 SQM

CONSULTANT : **MaRS** Planning & Engineering Services Pvt. Ltd.  
 287/C Yash Padm Beside Hill Top Motors Ashok Nagar,  
 Ranchi- 834002, Jharkhand, India.  
[Jharkhand@marsconsultancy.com](mailto:Jharkhand@marsconsultancy.com)

TITLE : - RAM NARAYAN +2 HIGH SCHOOL PADMA, HAZARIBAG  
 BLOCK : PADMA  
 FORWARDED BY : MaRS