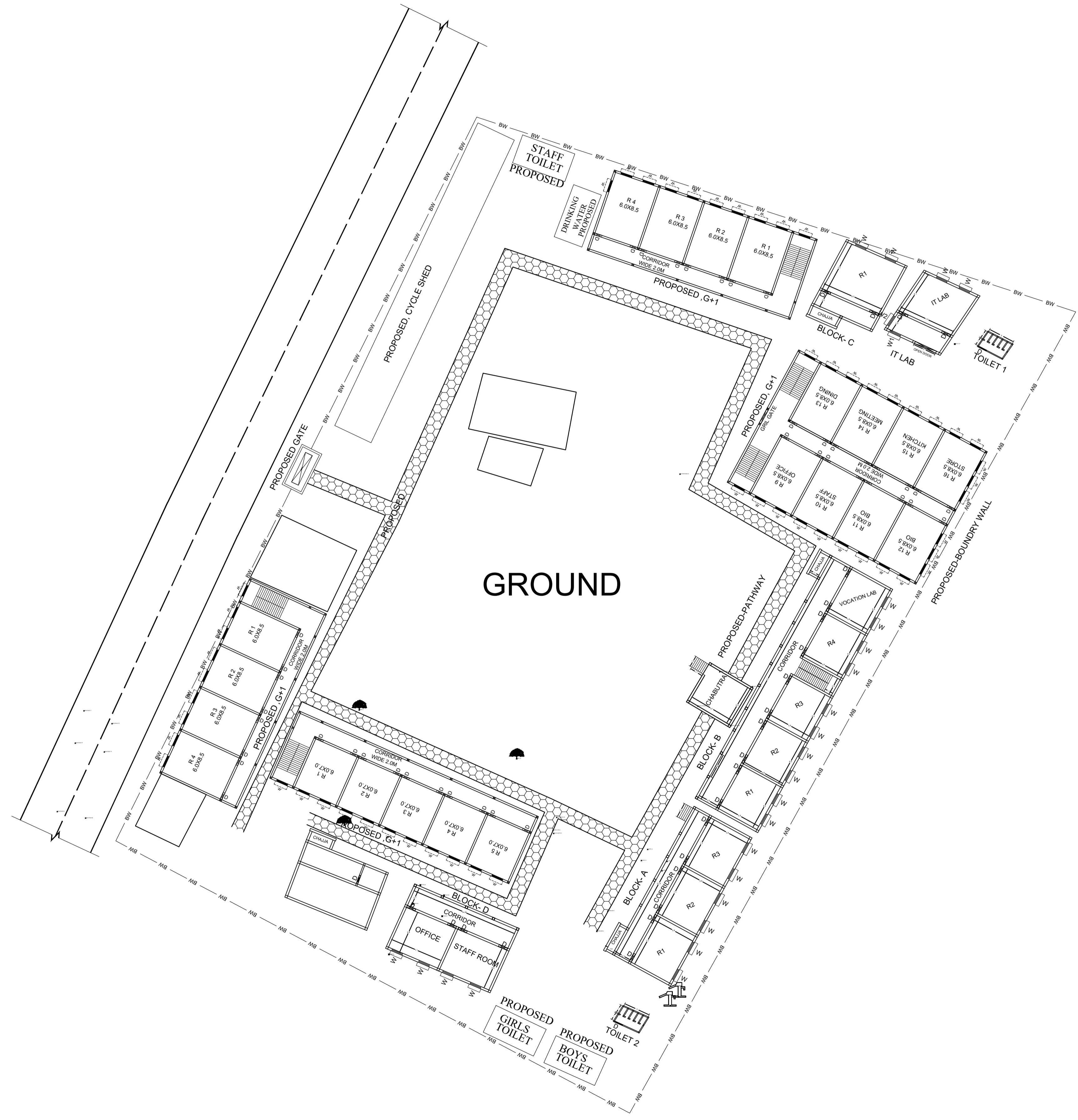
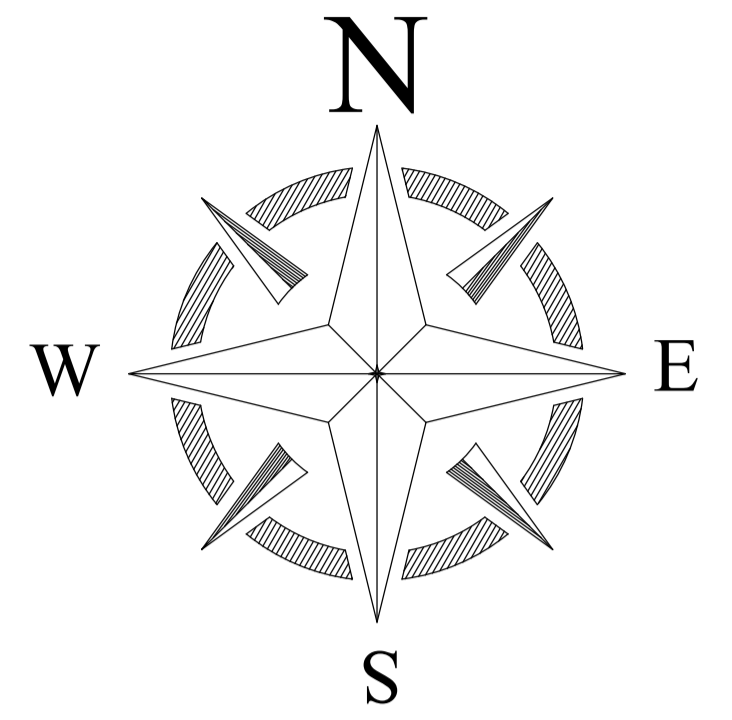


# PROPOSED SITE PLAN OF SCHOOL



TOTAL LAND AREA-9171.6 SQM



BLOCK NO	BLOCK NAME	AREA(In m)	TYPE
1	BLOCK - A	408.8	G+1FLOOR
2	BLOCK - B	714.4	G+1FLOOR
3	BLOCK - C	94.3	G. FLOOR
4	BLOCK - D	141.9	G. FLOOR
5	DEMOLISH	101.9	G. FLOOR
6	CHABUTRA	43.4	G. FLOOR
7	IT LAB	77.1	G. FLOOR
8	TOILET 1	9.4	G. FLOOR
9	TOILET 2	9.4	G. FLOOR

CONSULTANT : **MaRS** Planning & Engineering Services Pvt. Ltd.  
 287/C Yash Padm Beside Hill Top Motors Ashok Nagar,  
 Ranchi- 834002, Jharkhand, India.  
[Jharkhand@marsconsultancy.com](mailto:Jharkhand@marsconsultancy.com)

TITLE : - UPG HIGH SCHOOL CHAUBE  
 BLOCK : CHALKUSHA  
 FORWARDED BY : MaRS