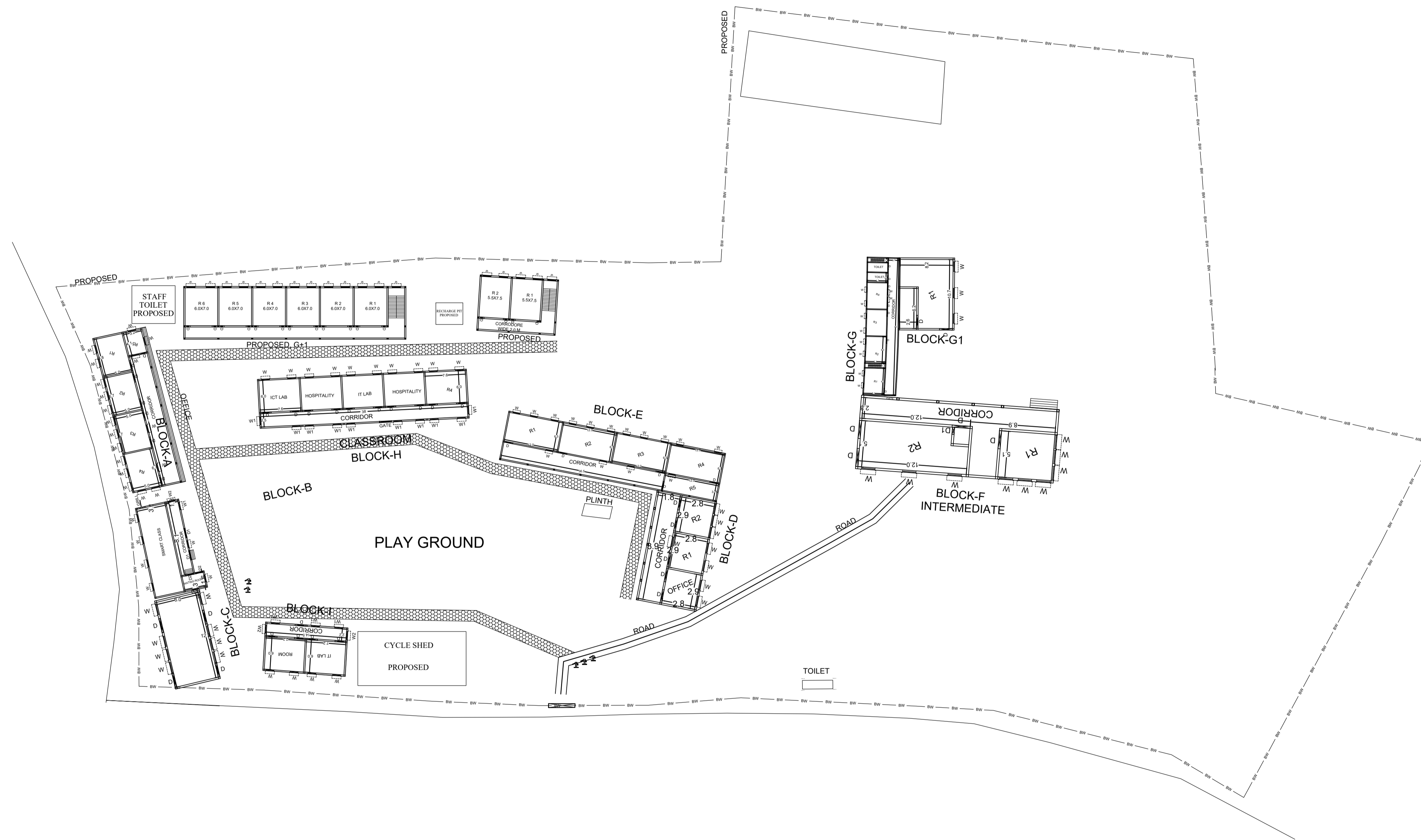
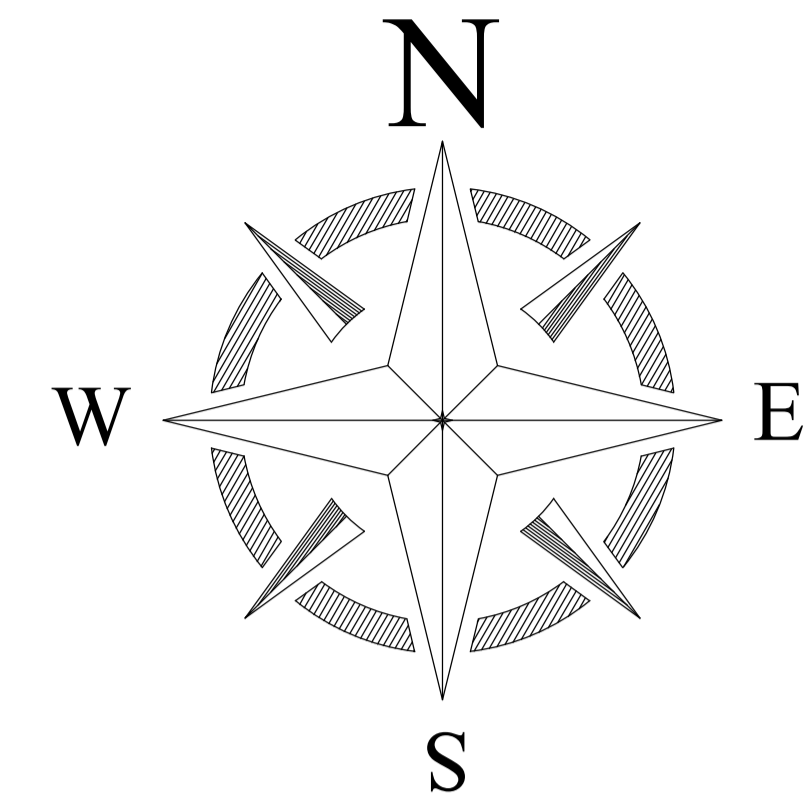


# PROPOSED SITE PLAN OF SCHOOL



## LEGENDS

BLOCK NO	BLOCK NAME	AREA(In m)	TYPE
1	BLOCK - A	325.22	G. FLOOR
2	BLOCK - B	370.0	G.+1 FLOOR
3	BLOCK - C	83.2	G. FLOOR
4	BLOCK - D	150.23	G. FLOOR
5	BLOCK - E	541.75	G. FLOOR
6	BLOCK - F	356.92	G.+1 FLOOR
7	BLOCK - G	428.99	G. FLOOR
8	BLOCK - G1	97.44	G. FLOOR
9	BLOCK - H	365.6	G. FLOOR
10	BLOCK - I	136.5	G. FLOOR
11	TOILET	9.0	G. FLOOR

**TOTAL LAND AREA -15232.13**

CONSULTANT :



MaRS Planning & Engineering Services Pvt. Ltd.  
 287/C Yash Padm Beside Hill Top Motors Ashok Nagar,  
 Ranchi- 834002, Jharkhand, India.  
[Jharkhand@marsconsultancy.com](mailto:Jharkhand@marsconsultancy.com)

TITLE : - SARVODAYA +2 HS SCHOOL, MARKACHO

BLOCK : MARKACHO

FORWARDED BY : MaRS