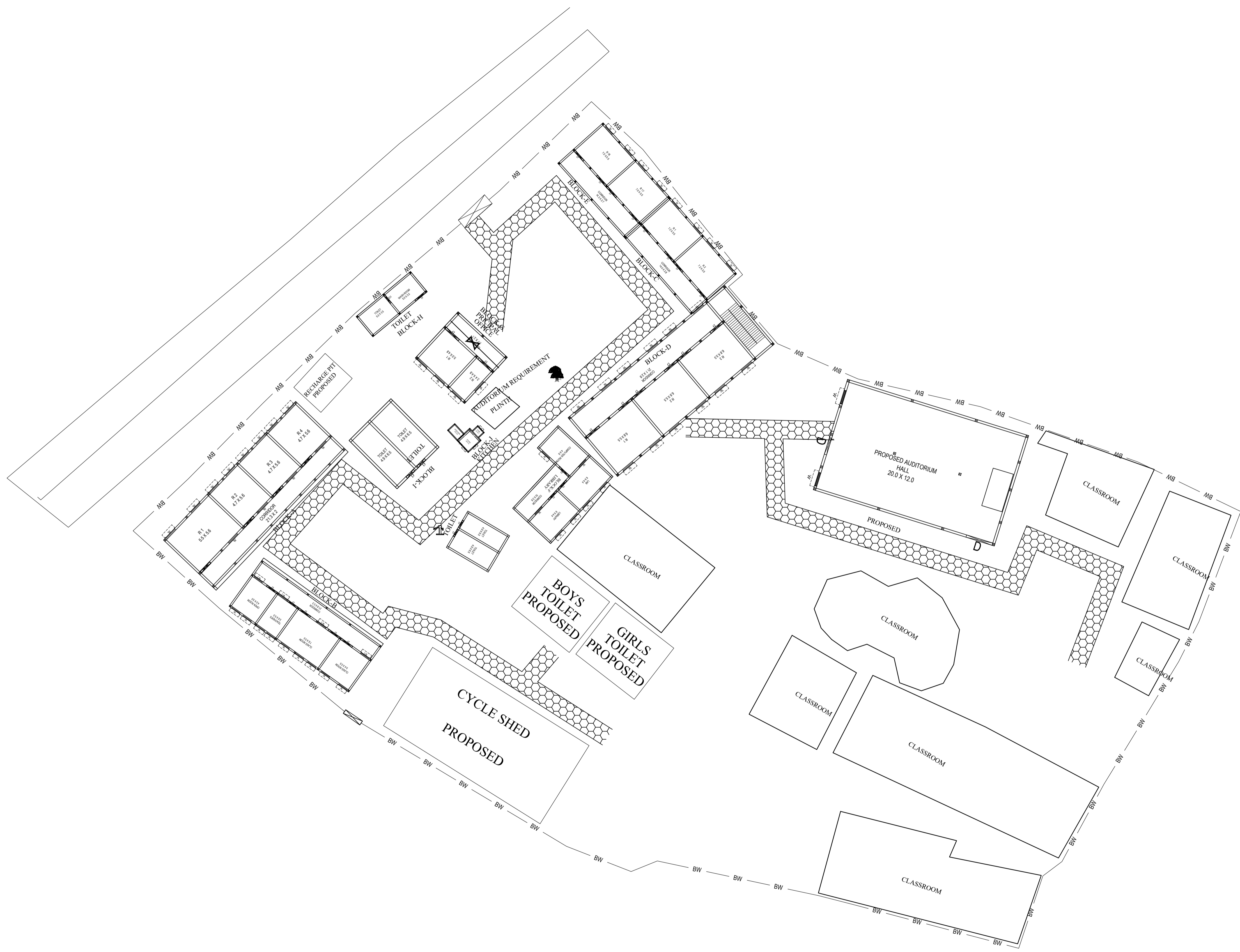
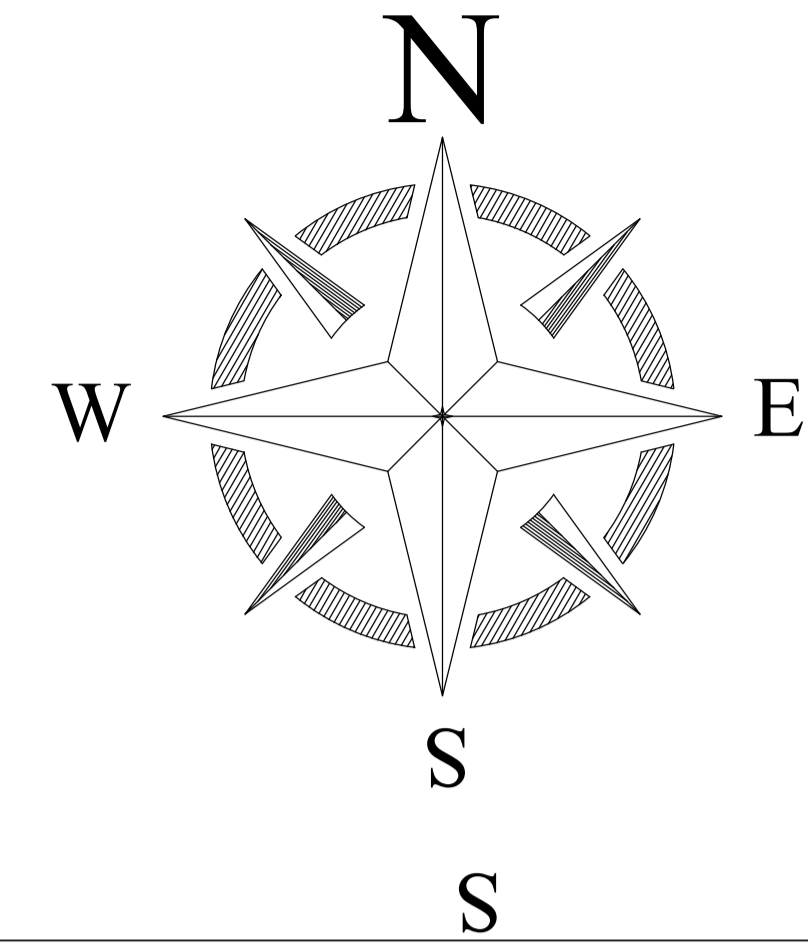


PROPOSED SITE PLAN OF SCHOOL


PRODUCED BY AN AUTODESK STUDENT VERSION



LEGENDS

BLOCK NO	BLOCK NAME	AREA(In m)	TYPE
1	BLOCK - A	196.8	G.FLOOR
2	BLOCK - B	200.6	G. FLOOR
3	BLOCK - C	138.2	G. FLOOR
4	BLOCK - D	436.6	G.+1 FLOOR
5	BLOCK - E	150.7	G.+1FLOOR
6	BLOCK - F	117.6	G. FLOOR
7	BLOCK - G	62.3	G. FLOOR
8	BLOCK - H	43	G. FLOOR
9	BLOCK - I	42.5	G. FLOOR
10	BLOCK - J	46.8	G. FLOOR
11	TOILET-1	42.5	G. FLOOR
11	DEMOLISH		

PROPOSED DRAWING

CONSULTANT :
 MaRS Planning & Engineering Services Pvt. Ltd.
 287/C Yash Padm Beside Hill Top Motors Ashok Nagar,
 Ranchi- 834002, Jharkhand, India.
Jharkhand@marsconsultancy.com

TITLE : - GOVT MS DOMCHANCH
 BLOCK : DOMCHANCH
 FORWARDED BY : MaRS

PRODUCED BY AN AUTODESK STUDENT VERSION

PRODUCED BY AN AUTODESK STUDENT VERSION

PRODUCED BY AN AUTODESK STUDENT VERSION