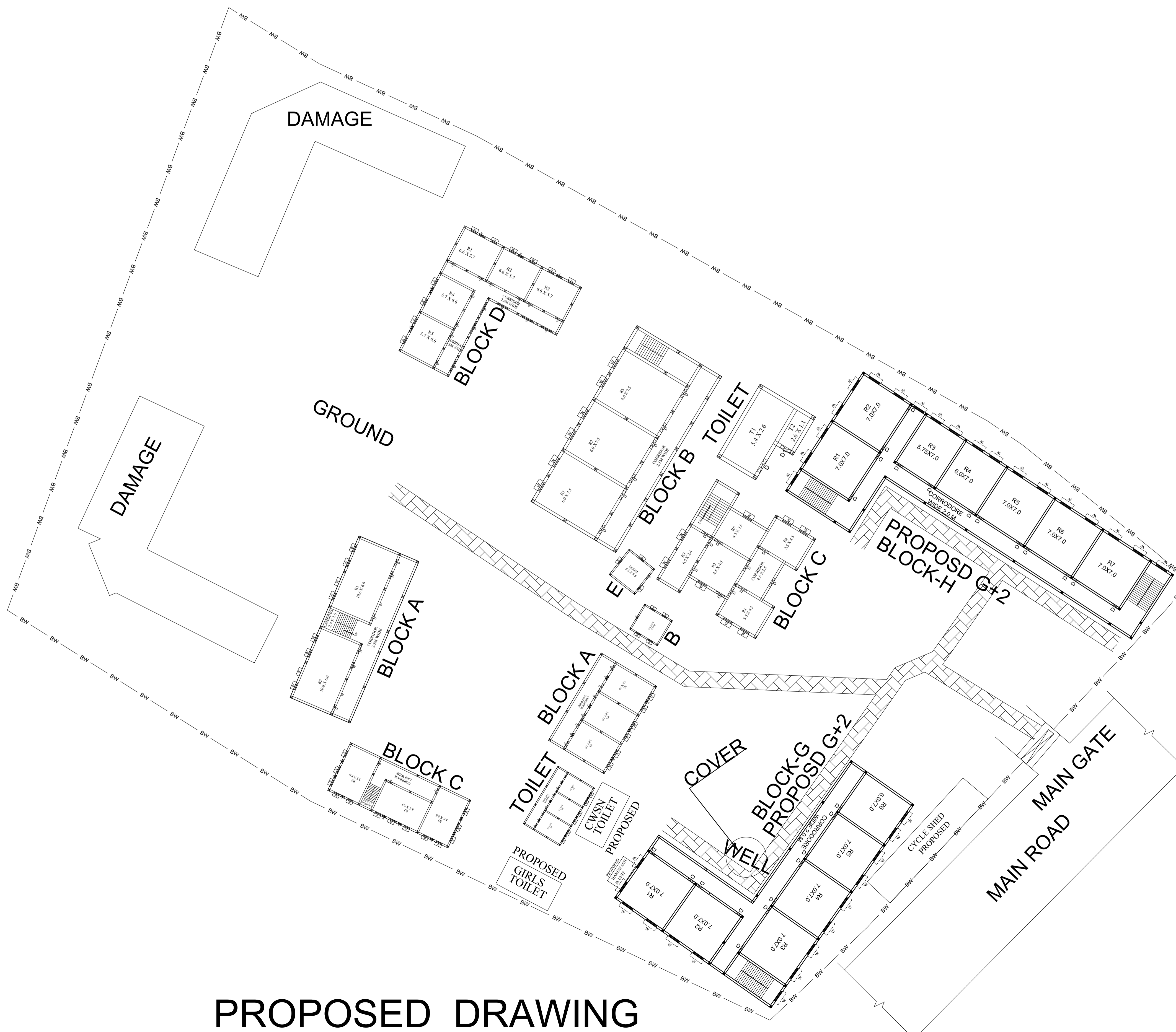
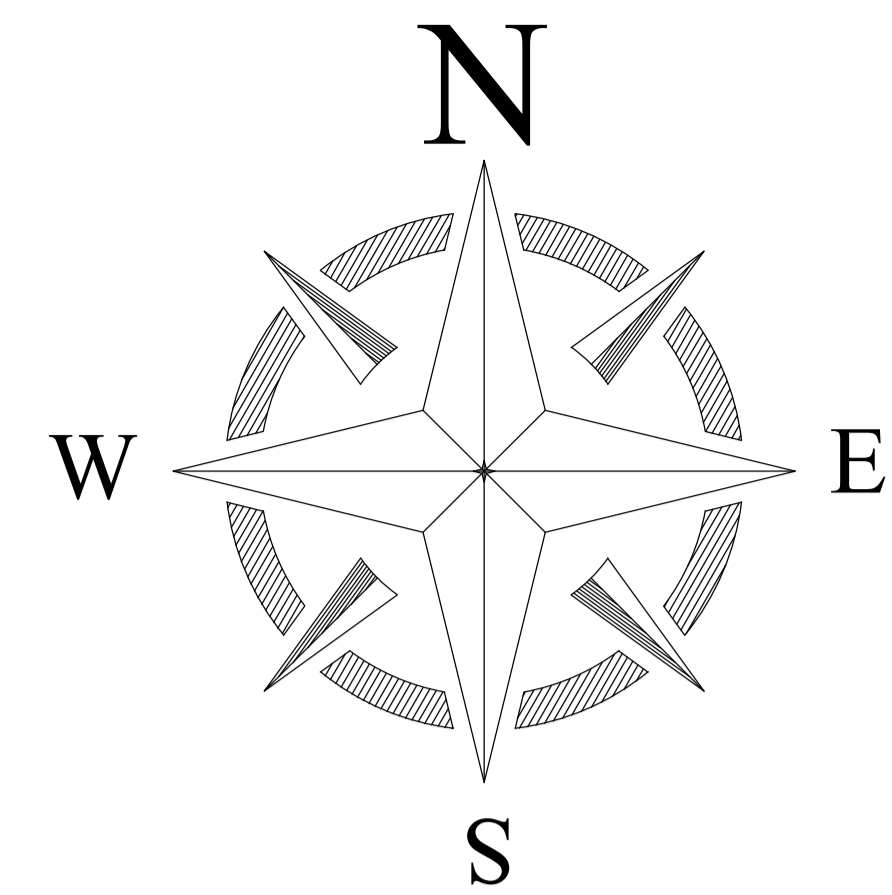


PROPOSED SITE PLAN OF SCHOOL



PROPOSED DRAWING

BLOCK NO	BLOCK NAME	AREA(In m)	TYPE
1	BLOCK - A	237.8	G. FLOOR
2	BLOCK - A	166.9	G. FLOOR
3	BLOCK - B	33.7	G. FLOOR
4	BLOCK - B	228.9	G. FLOOR
5	BLOCK - C	270.3	G+1
6	BLOCK - C	373.5	G+1
7	BLOCK - D	72.2	G. FLOOR
8	BLOCK - D	306.8	G+1
9	BLOCK - E	7.8	G. FLOOR
10	BLOCK - E	30.3	G. FLOOR
11	BLOCK - F	192.4	G. FLOOR
12	TOILET	22.8	G. FLOOR

CONSULTANT :



MaRS Planning & Engineering Services Pvt. Ltd.
 287/C Yash Padm Beside Hill Top Motors Ashok Nagar,
 Ranchi- 834002, Jharkhand, India.
Jharkhand@marsconsultancy.com

SCHOOL NAME :

ANCHI DEVI S.BALIKA +2 H.S MADHUPUR

DISTRICT : - DEOGHAR

BLOCK : - MADHUPUR

FORWARDED BY : MaRS

PAGE : A4