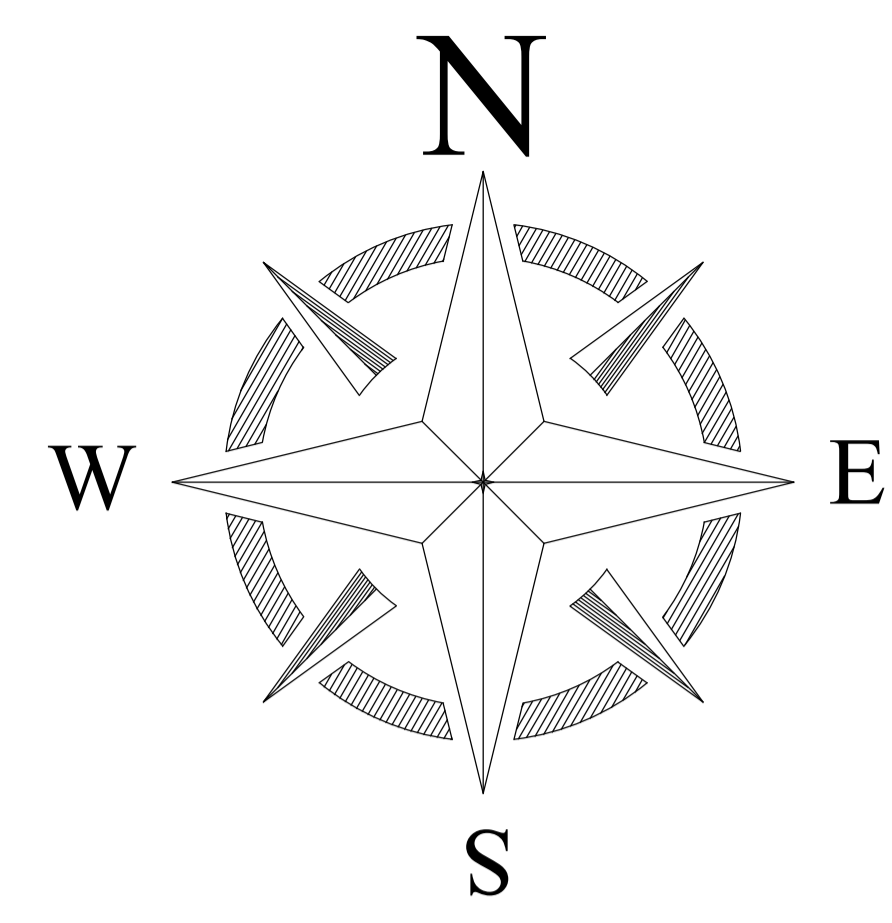
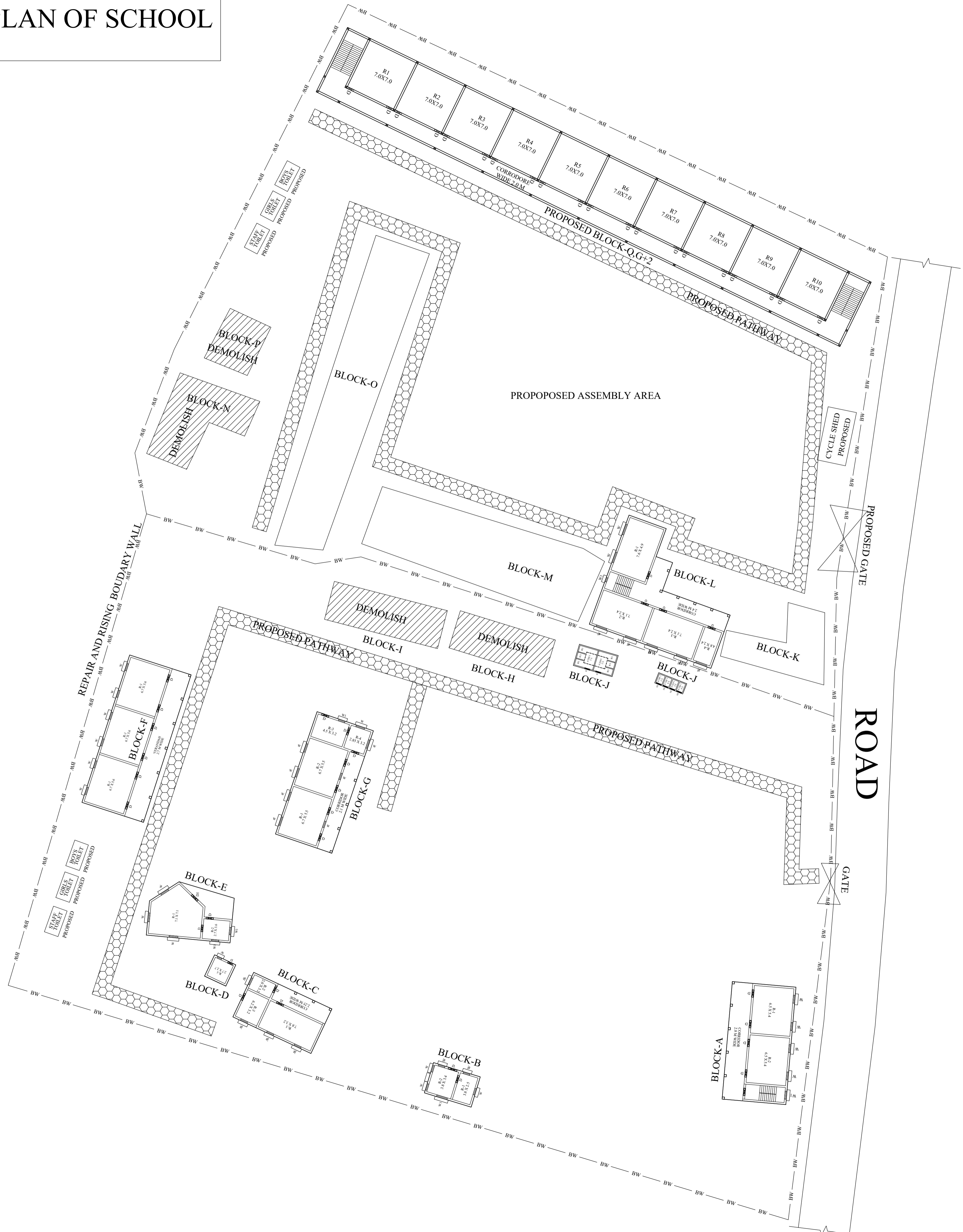


PROPOSED SITE PLAN OF SCHOOL



BLOCK NO	BLOCK NAME	AREA(In M)	TYPE
1	BLOCK - A	139.63 SQM	G FLOOR
2	BLOCK - B	28.6 SQM	G FLOOR
3	BLOCK- C	78.72 SQM	G FLOOR
4	BLOCK- D	10.24 SQM	G FLOOR
5	BLOCK- E	76.07 SQM	G FLOOR
6	BLOCK- F	185.68 SQM	G FLOOR
7	BLOCK- G	142.56 SQM	G FLOOR
8	BLOCK- H	71.81 SQM	G FLOOR
9	BLOCK- I	235.81 SQM	G FLOOR
10	BLOCK- J	22.65 SQM	G FLOOR
11	BLOCK- K	23.0 SQM	G FLOOR
12	BLOCK- L	188.98 SQM	G FLOOR
TOTAL AREA		13261.0311 SQM.	

CONSULTANT :



MaRS Planning & Engineering Services Pvt. Ltd.
 287/C Yash Padm Beside Hill Top Motors Ashok Nagar,
 Ranchi- 834002, Jharkhand, India.
Jharkhand@marsconsultancy.com

SCHOOL NAME : RANI MANDAKINI H.S KAROGRAM

DISTRICT : -DEOGHAR	PAGE : A4
BLOCK : -KAROWN	
FORWARDED BY : MaRS	