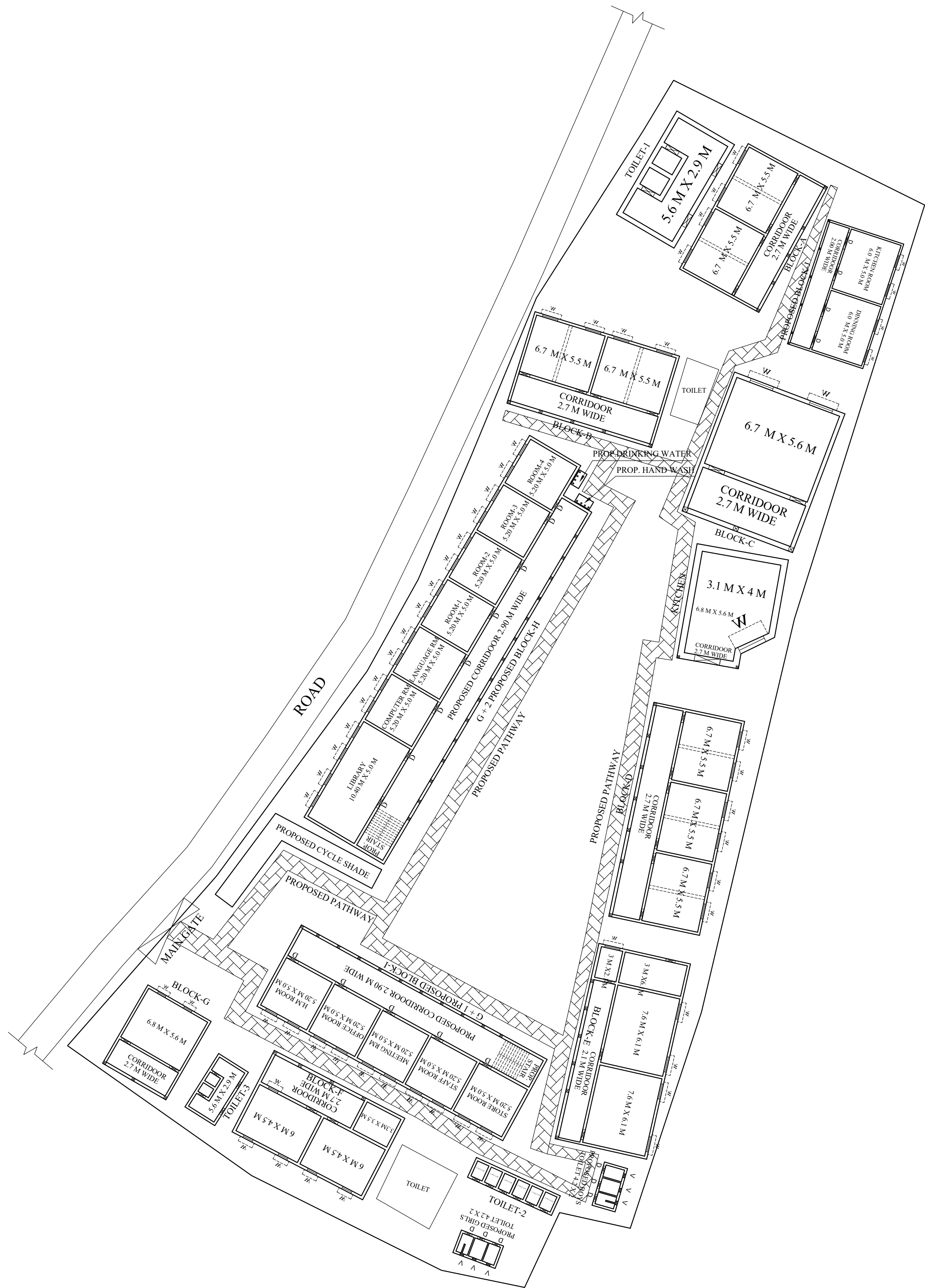
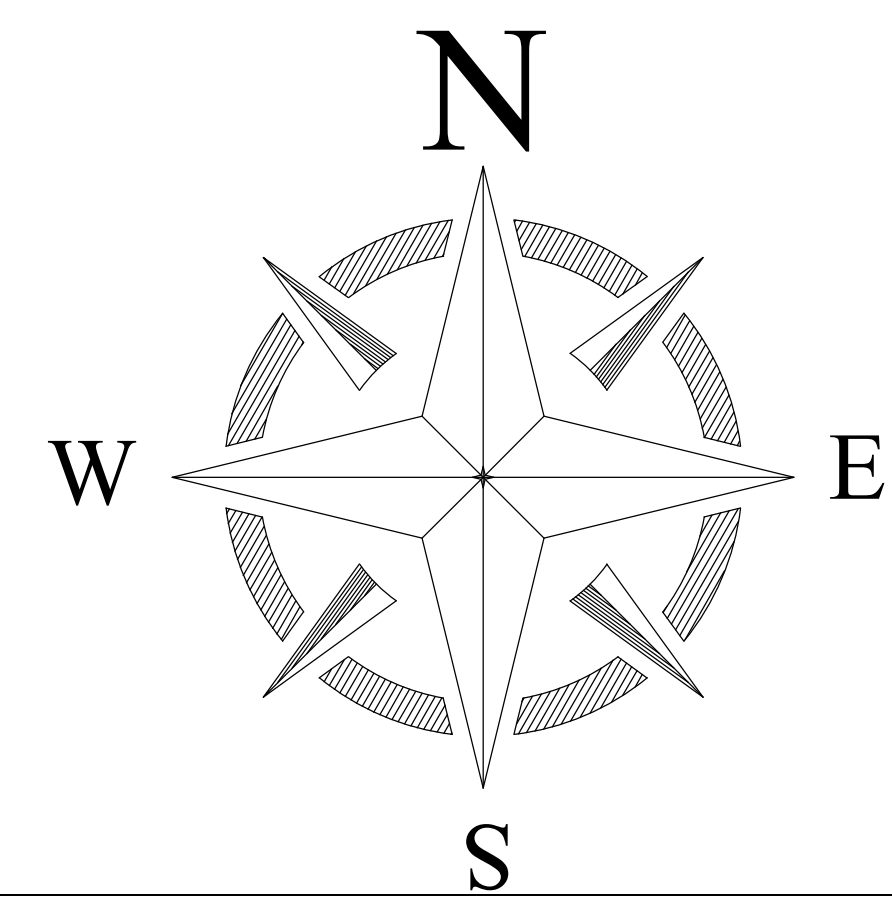


PROPOSED SITE PLAN OF SCHOOL




PROPOSED DRAWING



LEGENDS

BLOCK NO	BLOCK NAME	AREA(In M)	TYPE
1	BLOCK - A	126.64 SQM	G FLOOR
2	BLOCK - B	126.64 SQM	G FLOOR
3	BLOCK- C	65.16 SQM	G FLOOR
4	BLOCK- D	188.84 SQM	G FLOOR
5	BLOCK- E	172.80 SQM	G FLOOR
6	BLOCK- F	101.36 SQM	G FLOOR
7	KITCHEN	81.12 SQM	G FLOOR
8	BLOCK- G	66.06 SQM	G FLOOR

CONSULTANT :  

**MaRS Planning & Engineering Services Pvt. Ltd.**  
 287/C Yash Padm Beside Hill Top Motors Ashok Nagar,  
 Ranchi- 834002, Jharkhand, India.  
[Jharkhand@marsconsultancy.com](mailto:Jharkhand@marsconsultancy.com)

SCHOOL NAME : **UPG GOVT M.S DEVIPUR**

DISTRICT : -GODDA	PAGE : A4
BLOCK : - BOARIJORE	
FORWARDED BY : MaRS	