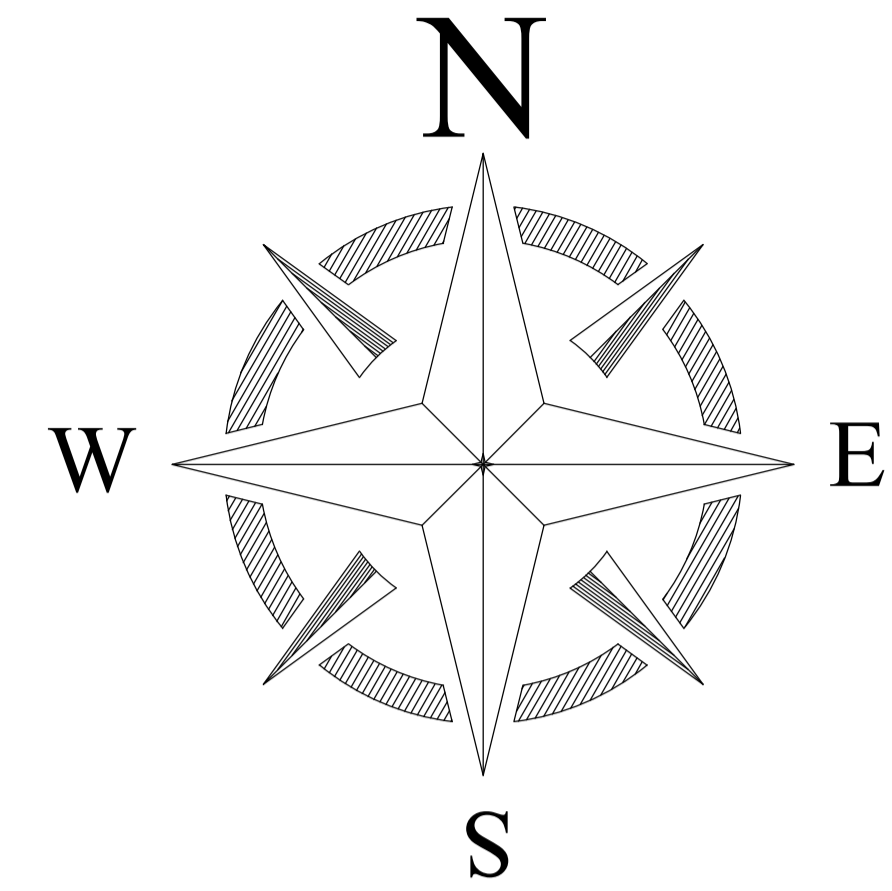
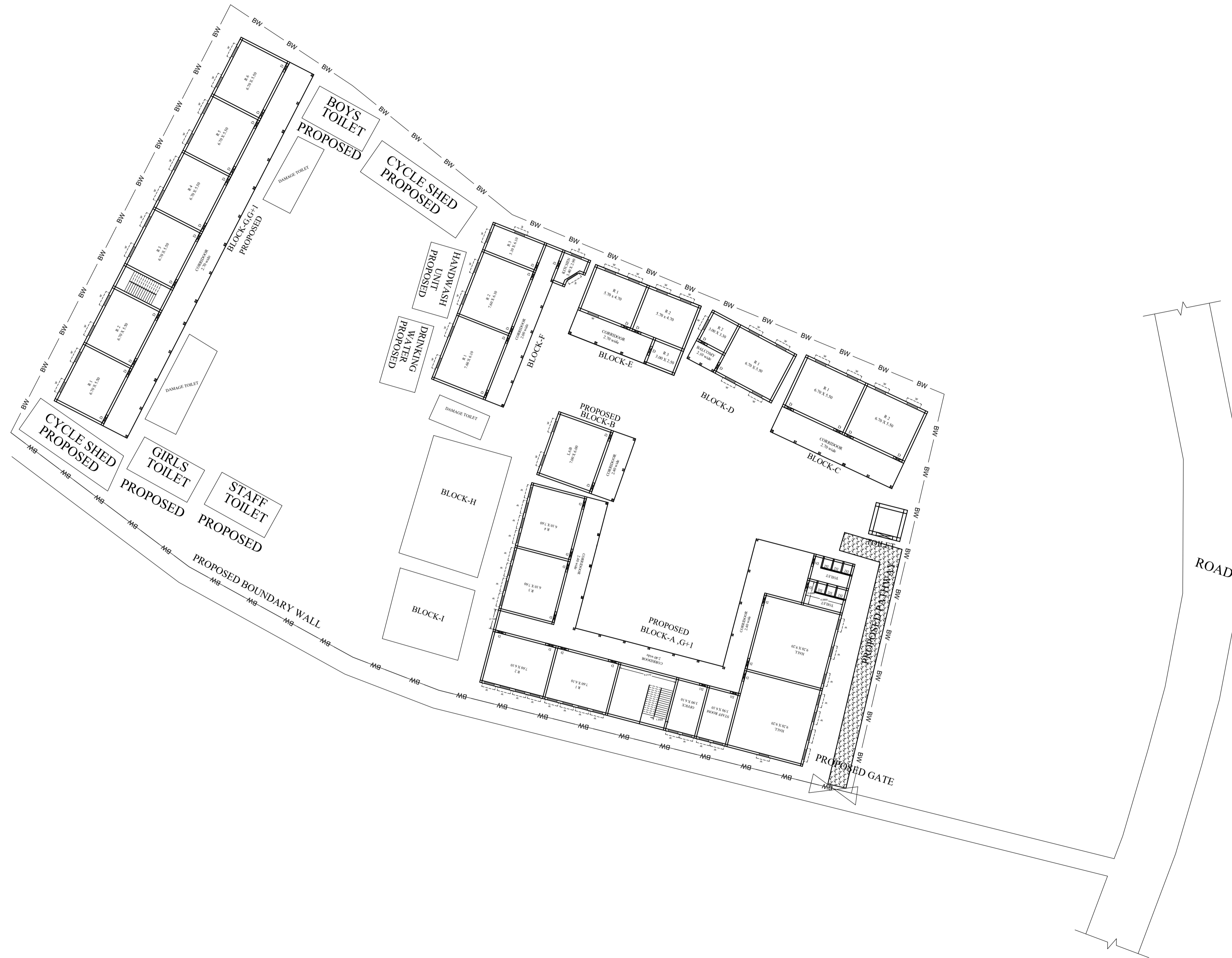


# PROPOSED SITE PLAN OF SCHOOL



## LEGENDS

BLOCK NO	BLOCK NAME	AREA(In M)	TYPE
1	BLOCK - A	720.79 SQM	G +1
2	BLOCK - B	68.65 SQM	G FLOOR
3	BLOCK- C	126.64 SQM	G FLOOR
4	BLOCK- D	62.70 SQM	G FLOOR
5	BLOCK - E	96.59 SQM	G FLOOR
6	BLOCK -F	180.17 SQM	G FLOOR
7	BLOCK - G	551.31 SQM	G FLOOR
8	TOILET	5.29 SQM	G FLOOR



MaRS Planning & Engineering Services Pvt. Ltd.  
 287/C Yash Padm Beside Hill Top Motors Ashok Nagar,  
 Ranchi- 834002, Jharkhand, India.  
[Jharkhand@marsconsultancy.com](mailto:Jharkhand@marsconsultancy.com)

SCHOOL NAME : UPG GOVT H.S BANJHI

DISTRICT : -GODDA

BLOCK : -PORAIYAHAT

FORWARDED BY : MaRS

PAGE : A4