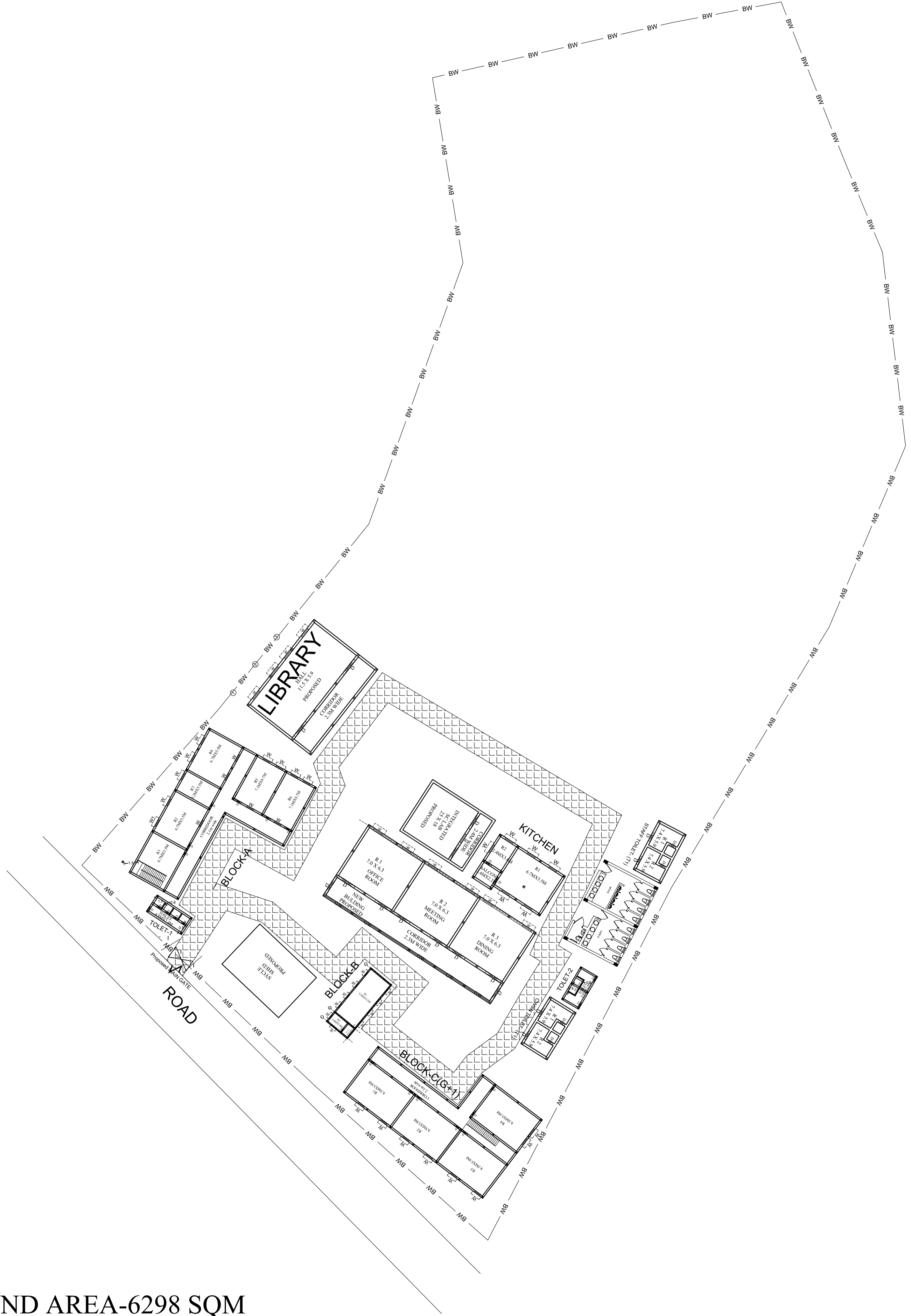
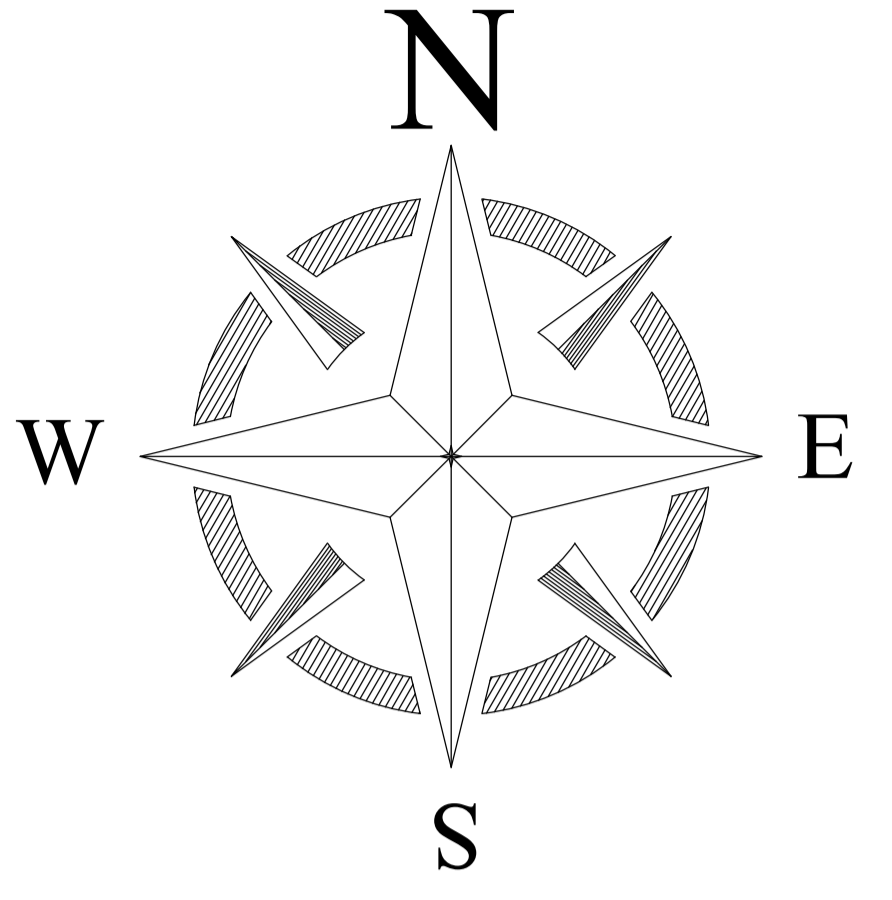


PROPOSED SITE PLAN OF SCHOOL



TOTAL LAND AREA-6298 SQM



LEGENDS

BLOCK NO	BLOCK NAME	AREA(In M)	TYPE
1	BLOCK - A	304 SQM	G +1
2	BLOCK - B	92 SQM	G FLOOR
3	BLOCK- C	301 SQM	G +1
4	KITCHEN	60 SQM	G FLOOR
5	TOILET- 1	17 SQM	G FLOOR
6	TOILET- 2	20 SQM	G FLOOR

CONSULTANT :



MaRS Planning & Engineering Services Pvt. Ltd.
 287/C Yash Padm Beside Hill Top Motors Ashok Nagar,
 Ranchi- 834002, Jharkhand, India.
Jharkhand@marsconsultancy.com

SCHOOL NAME : GOVT MS GODDA BOYS SCHOOL

DISTRICT : - GODDA	PAGE : A4
BLOCK : - GODDA	
FORWARDED BY : MaRS	