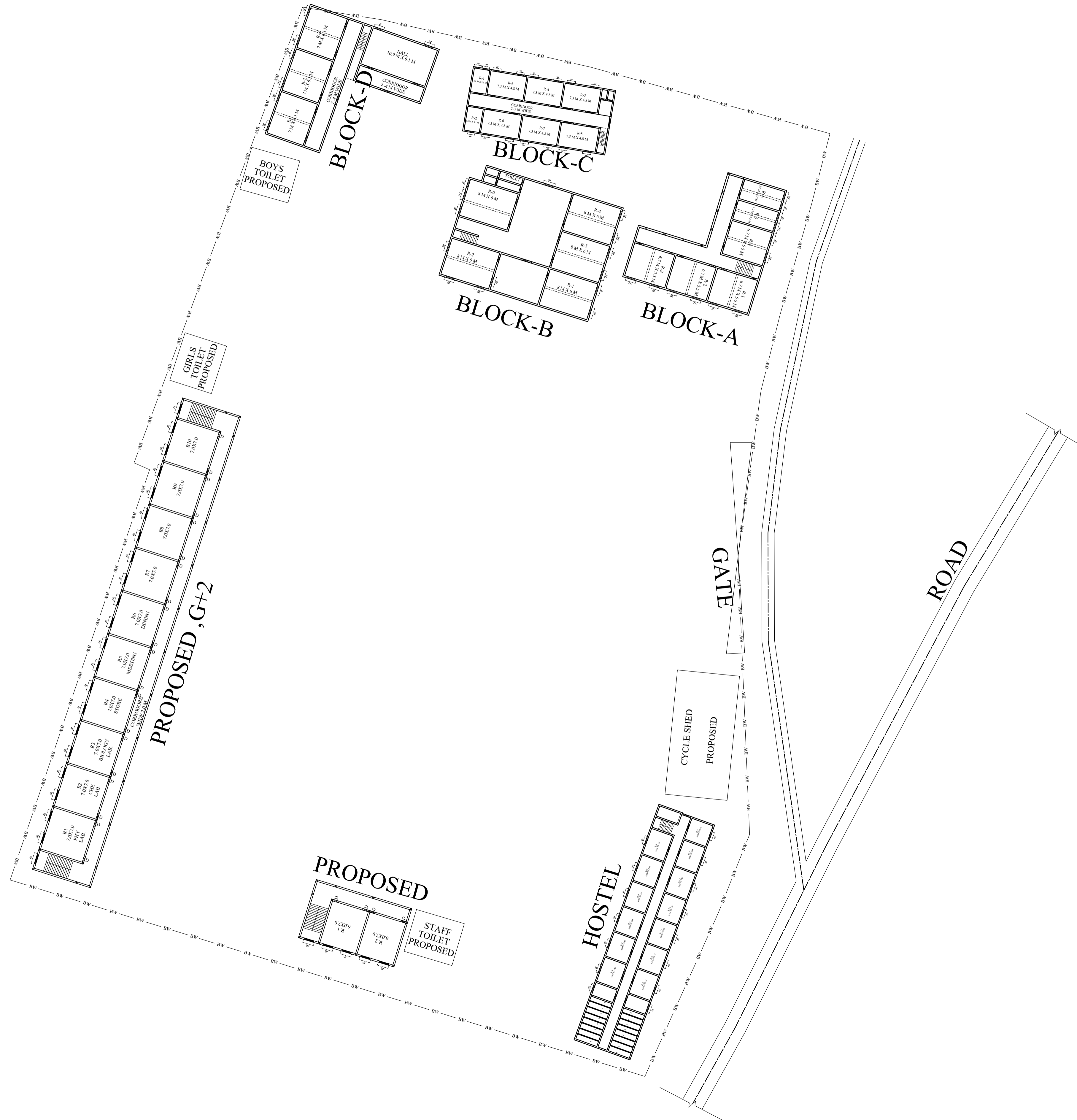
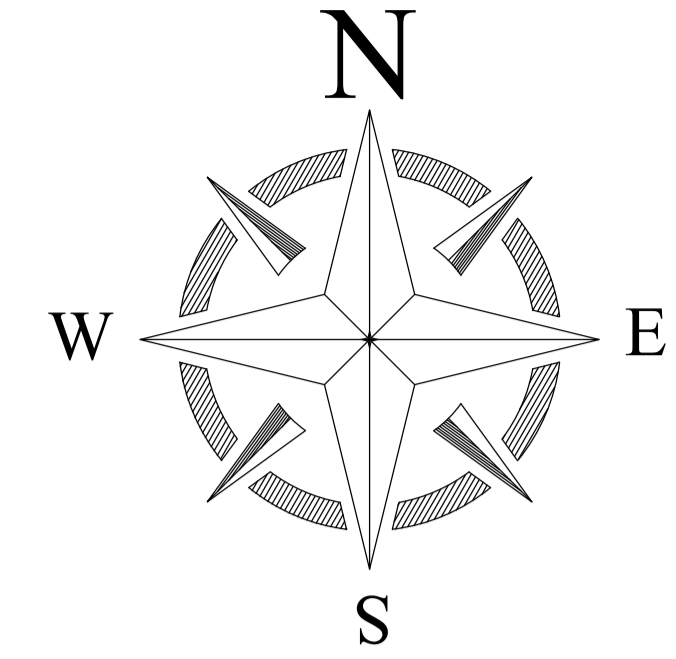


PROPOSAL SITE PLAN OF SCHOOL



TOTAL LAND AREA - 14927 SQM



LEGENDS

BLOCK NO.	BLOCK NAME	AREA(In M <sup>2</sup> )	TYPE
1	BLOCK - A	281.25 SQM	CLASS ROOM FLOOR
2	BLOCK - B	450.40 SQM	CLASS ROOM FLOOR
3	BLOCK- C	357.83 SQM	CLASS ROOM FLOOR
4	BLOCK- D	298.81 SQM	CLASS ROOM FLOOR
5	TOILET	497.95 SQM	TOILET FLOOR

CONSULTANT :



MaRS Planning & Engineering Services Pvt. Ltd.  
 287/C Yash Padm Beside Hill Top Motors Ashok Nagar,  
 Ranchi- 834002, Jharkhand, India.  
[Jharkhand@marsconsultancy.com](mailto:Jharkhand@marsconsultancy.com)

SCHOOL NAME : UPG+2 H.S UDHWA

DISTRICT : - SAHIBGANG

BLOCK : -UDHWA

FORWARDED BY : MaRS

PAGE : A4