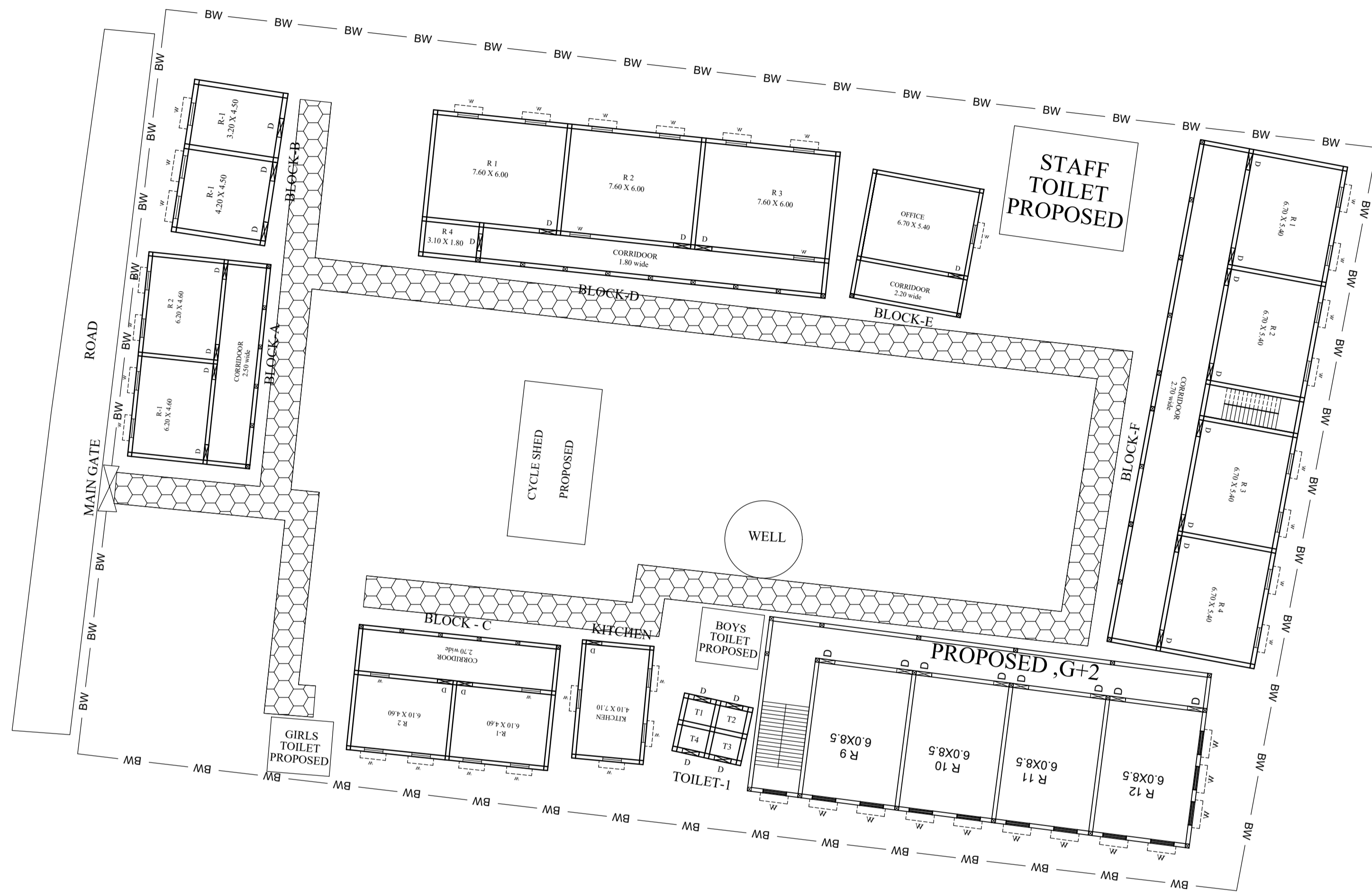
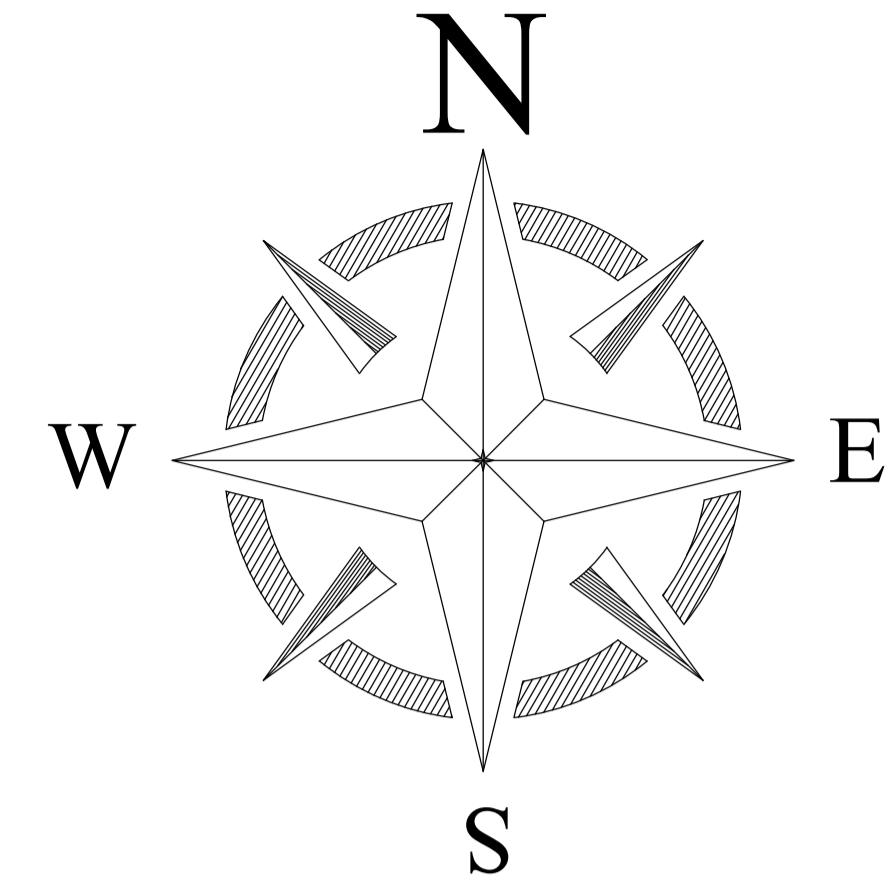


PROPOSED SITE PLAN OF SCHOOL



TOTAL LAND AREA-3293 SQM



LEGENDS

BLOCK NO	BLOCK NAME	AREA(In M)	TYPE
1	BLOCK - A	103.22 SQM	G FLOOR
2	BLOCK - B	40.75 SQM	G FLOOR
3	BLOCK- C	104.24 SQM	G FLOOR
4	BLOCK- D	203.50 SQM	G FLOOR
5	BLOCK- E	60.12 SQM	G FLOOR
6	BLOCK- F	267.27 SQM	G+1
7	KITCHEN	35.00 SQM	G FLOOR
8	TOILET-1	11.81 SQM	G FLOOR
9	TOILET-2	5.62 SQM	G FLOOR

CONSULTANT :



MaRS Planning & Engineering Services Pvt. Ltd.
 287/C Yash Padm Beside Hill Top Motors Ashok Nagar,
 Ranchi- 834002, Jharkhand, India.
Jharkhand@marsconsultancy.com

SCHOOL NAME : UPG GOVT H.S SOTICHOWKI PANGRO

DISTRICT : - SAHIBGANG

BLOCK : -BORIO

FORWARDED BY : MaRS

PAGE : A4