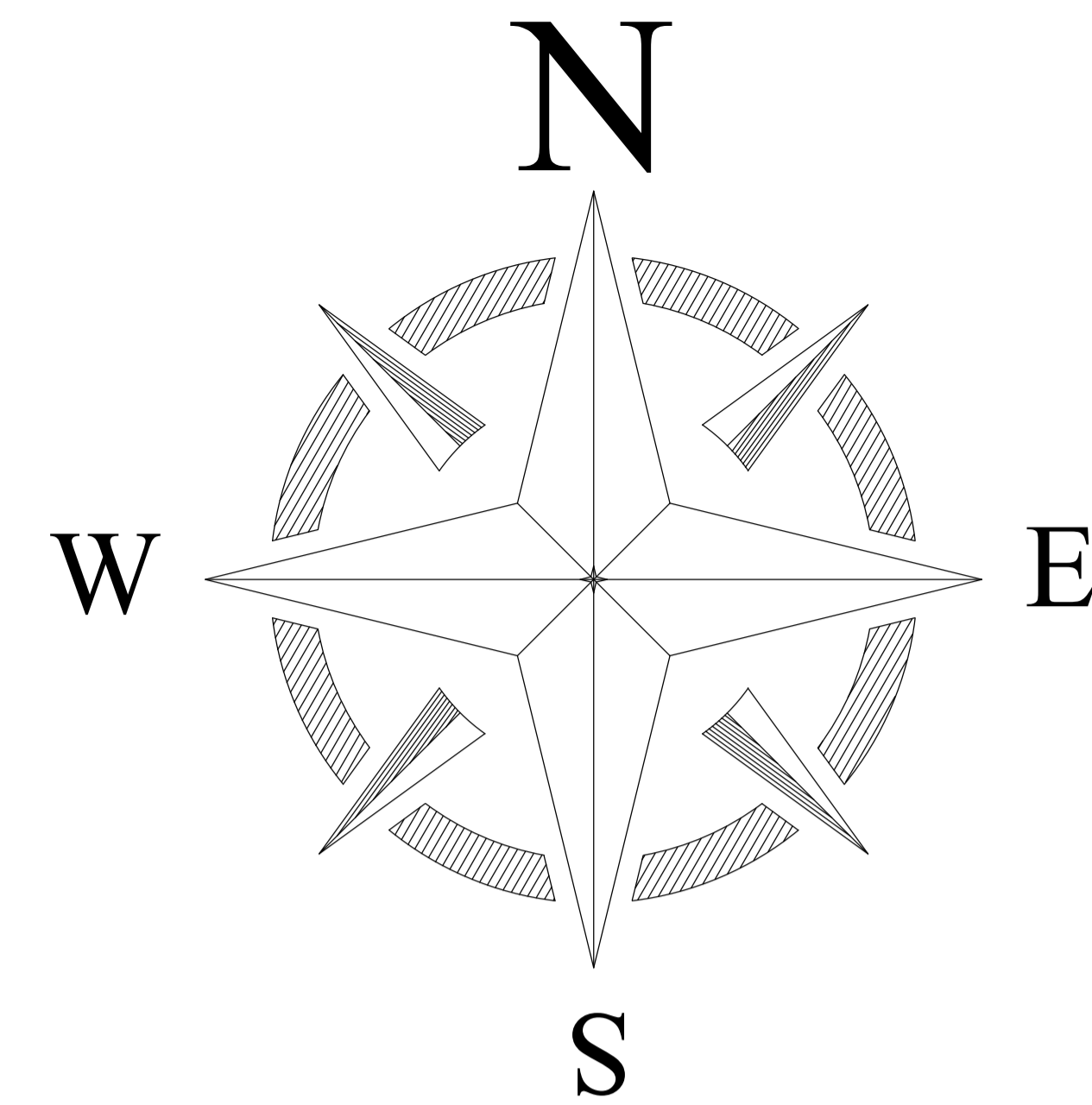
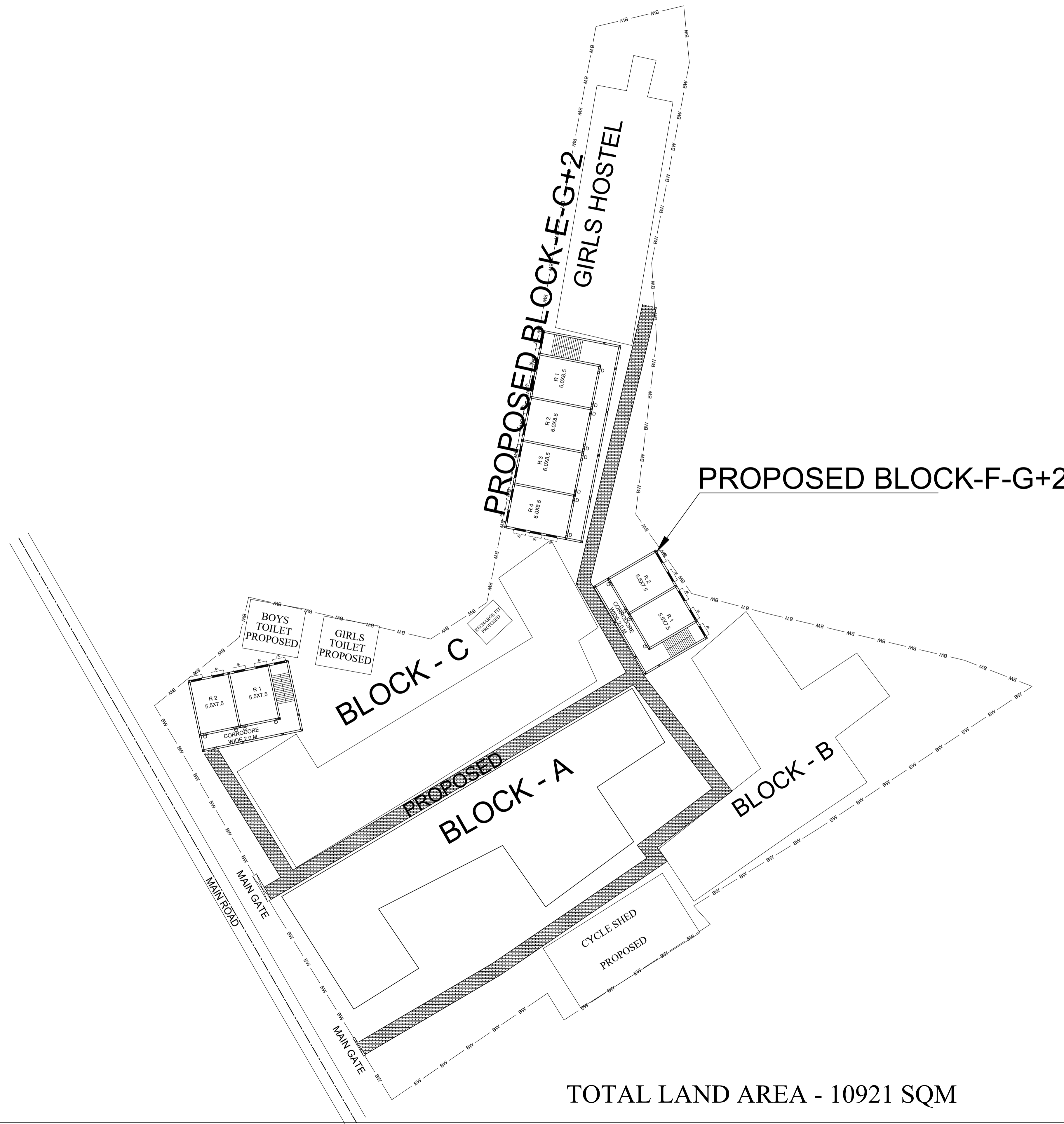


PROPOSED SITE PLAN OF SCHOOL



LEGENDS

BLOCK NO	BLOCK NAME	AREA(In M)	TYPE
1	BLOCK - A	139 SQM	G FLOOR
2	BLOCK - B	75 SQM	G FLOOR
3	BLOCK- C	1201 SQM	G FLOOR
4	BLOCK- D	807 SQM	G FLOOR
5	TOILET	23 SQM	G FLOOR



TOTAL LAND AREA - 10921 SQM

CONSULTANT :



MaRS Planning & Engineering Services Pvt. Ltd.
 287/C Yash Padm Beside Hill Top Motors Ashok Nagar,
 Ranchi- 834002, Jharkhand, India.
Jharkhand@marsconsultancy.com

TITLE : - Barharwa High School, Barharwa, SAHEBGANJ
 BLOCK : BARHARWA
 FORWARDED BY : MaRS