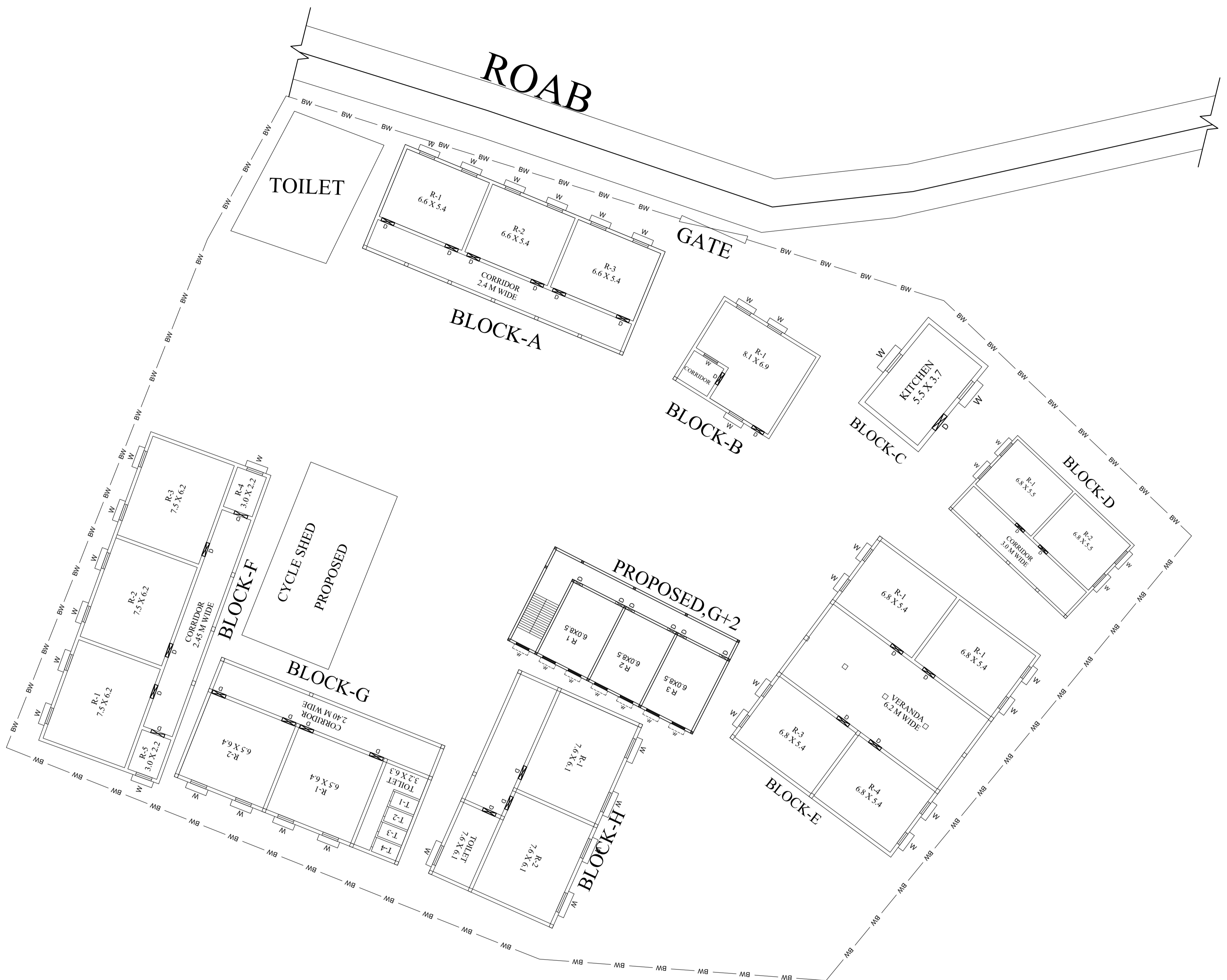
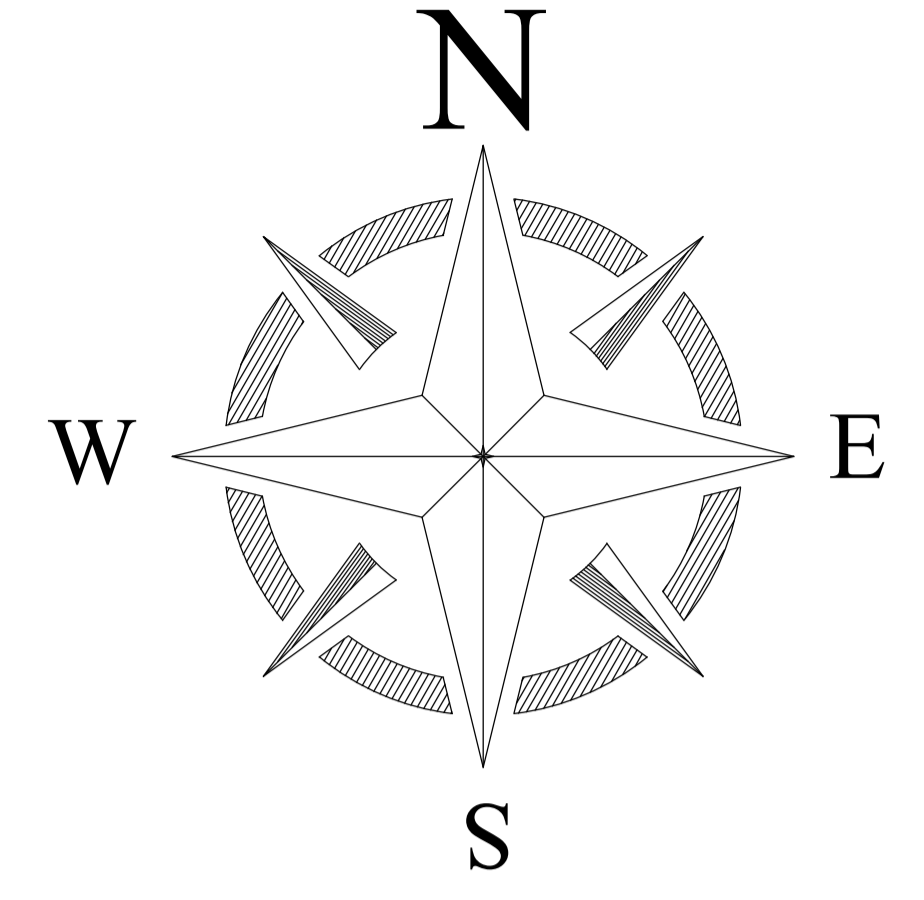


PROPOSED SITE PLAN OF SCHOOL



TOTAL LAND AREA - 7649 SQM



LEGENDS

BLOCK NO	BLOCK NAME	AREA(In M)	TYPE
1	BLOCK - A	172.6 SQM	G FLOOR
2	BLOCK - B	63.6 SQM	G FLOOR
3	BLOCK- C	63.6 SQM	G FLOOR
4	BLOCK- D	129.1 SQM	G FLOOR
5	BLOCK- E	258.3 SQM	G FLOOR
6	BLOCK- F	215.0 SQM	G FLOOR
7	BLOCK-G	158.2 SQM	G FLOOR
8	BLOCK-H	154.7 SQM	G FLOOR

CONSULTANT :



MaRS Planning & Engineering Services Pvt. Ltd.  
 287/C Yash Padm Beside Hill Top Motors Ashok Nagar,  
 Ranchi- 834002, Jharkhand, India.  
[Jharkhand@marsconsultancy.com](mailto:Jharkhand@marsconsultancy.com)

SCHOOL NAME : UPG H.S POKHARIA

DISTRICT : - SAHIBGANG	PAGE : A4
BLOCK : - TALIHARI	
FORWARDED BY : MaRS	