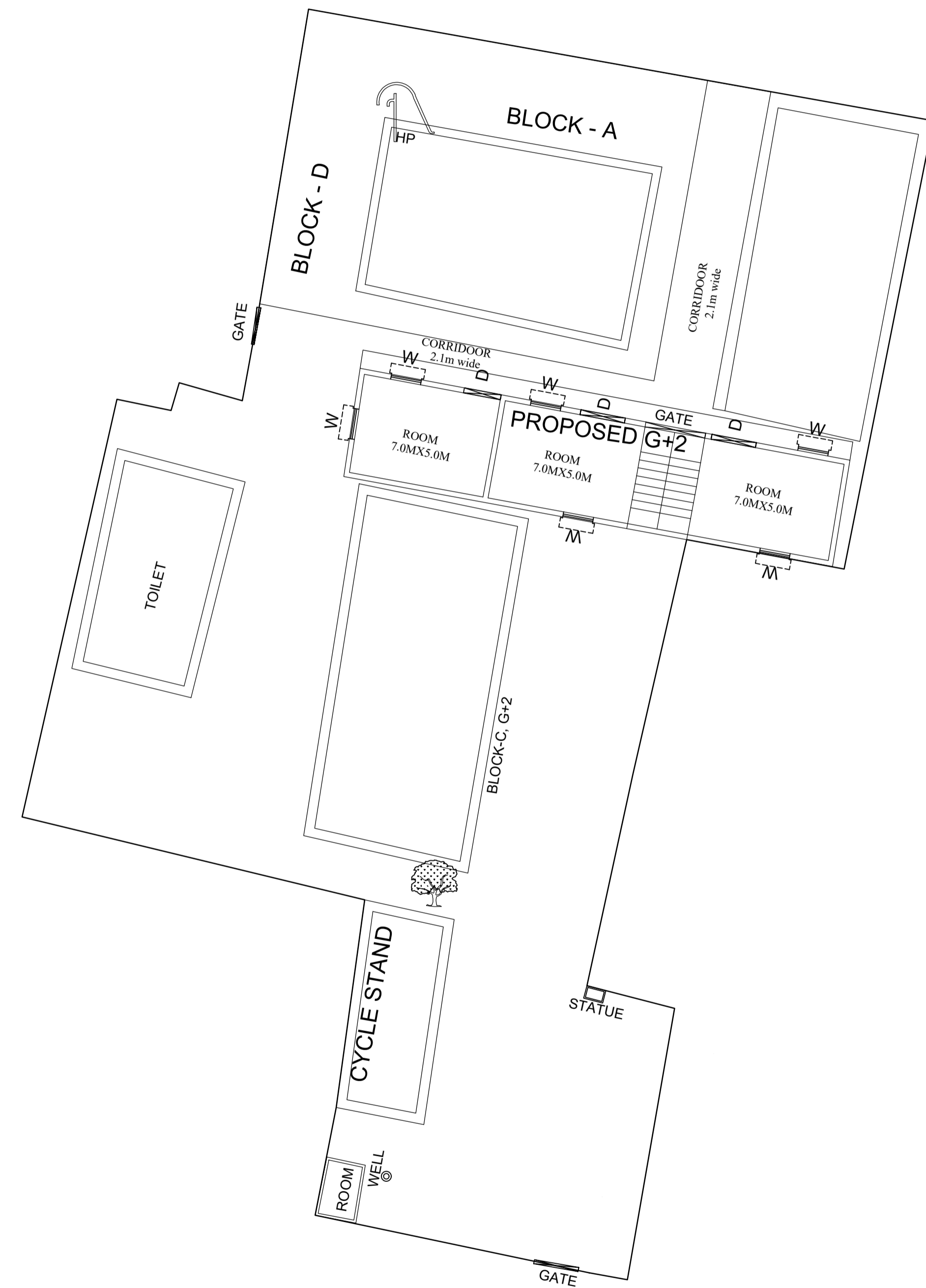
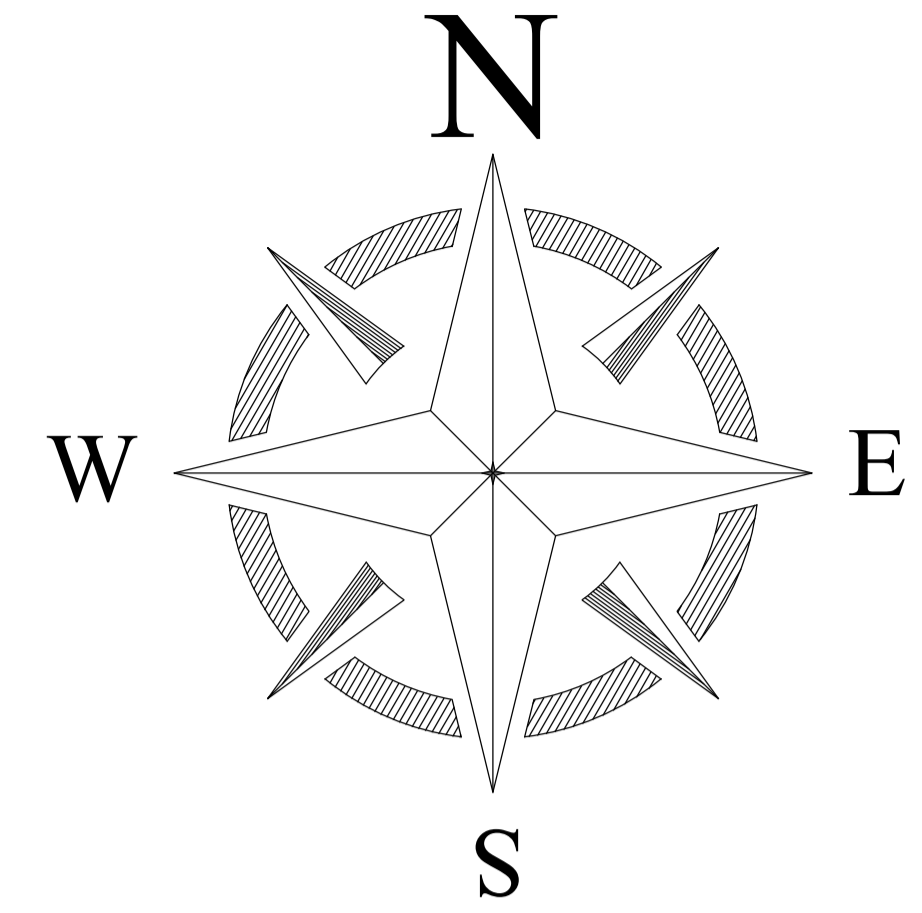


# R.J.M.GIRLS HIGH SCHOOL PAKUR (PAKUR)



## LEGENDS

BLOCK NO	BLOCK NAME	AREA(In M)	TYPE
1	BLOCK - A	146 SQM	G +1
2	BLOCK - C	163 SQM	G +1
3	BLOCK- D	43 SQM	G FLOOR

**PROPOSED DRAWING**  
**TOTAL AREA - 3038.9 SQM**

CONSULTANT :



**MaRS Planning & Engineering Services Pvt. Ltd.**  
 287/C Yash Padm Beside Hill Top Motors Ashok Nagar,  
 Ranchi- 834002, Jharkhand, India.  
[Jharkhand@marsconsultancy.com](mailto:Jharkhand@marsconsultancy.com)

SCHOOL NAME : - R.J.M.GIRLS HIGH SCHOOL PAKUR (PAKUR)

DISTRICT : - PAKUR                      BLOCK : - PAKUR

FORWARDED BY : MaRS