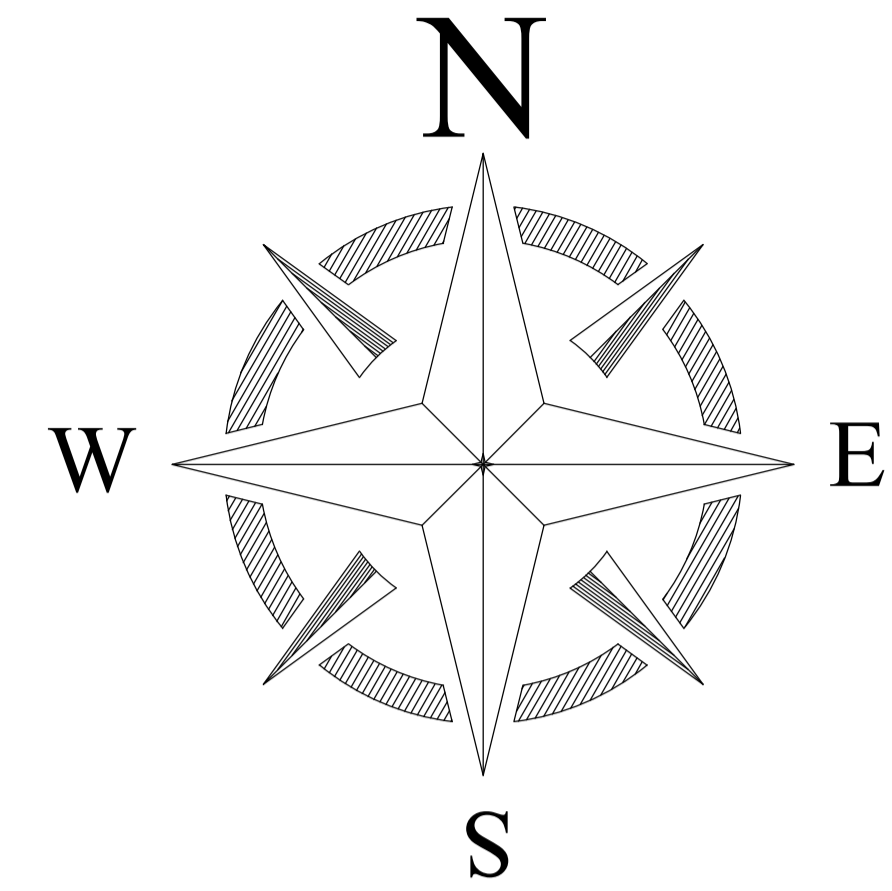
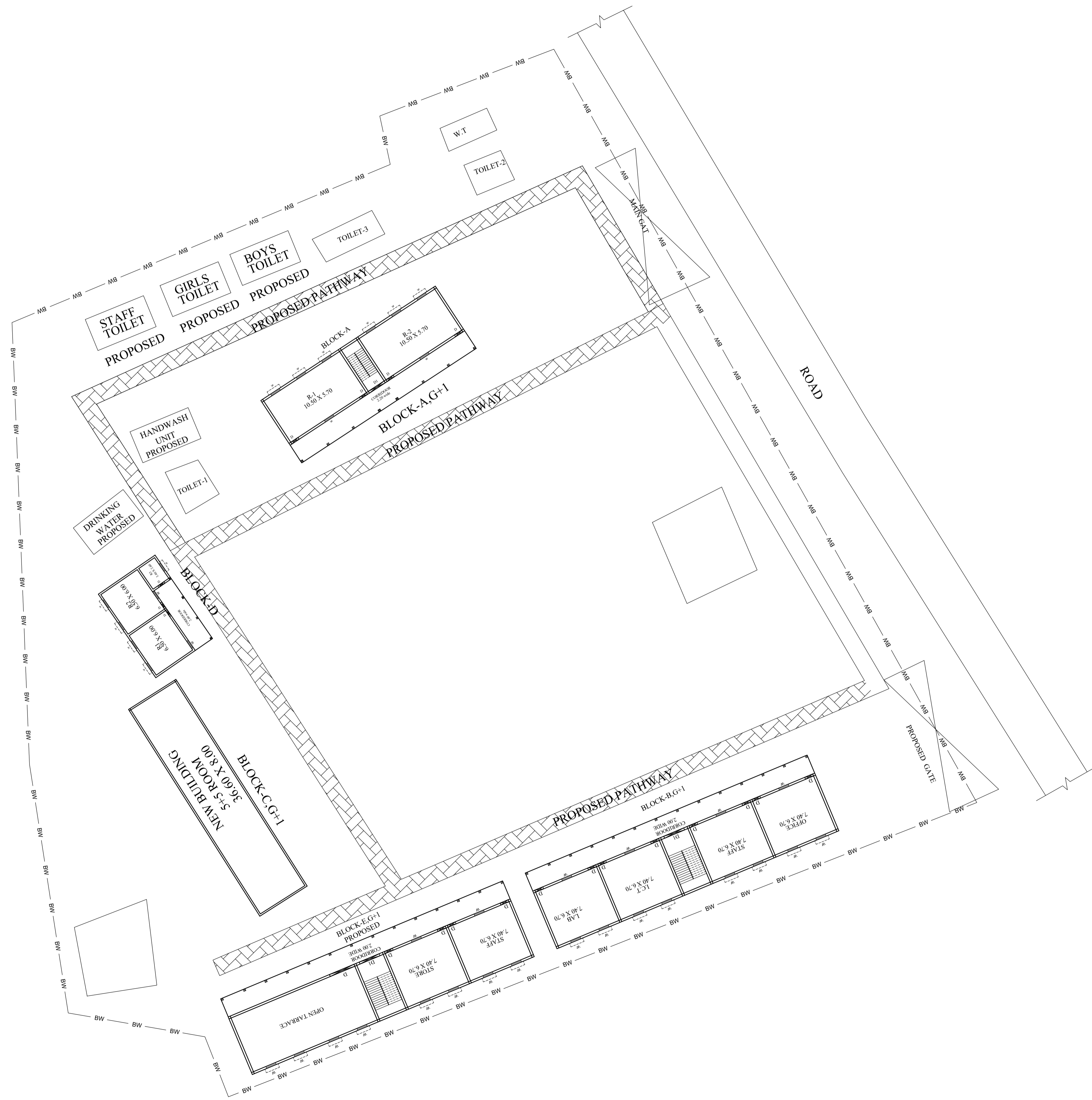


PROPOSED SITE PLAN OF SCHOOL



LEGENDS

BLOCK NO	BLOCK NAME	AREA(In M)	TYPE
1	BLOCK - A	209.33 SQM	G +1
2	BLOCK - B	332.64 SQM	G +1
3	BLOCK- C	300 SQM	G +1
4	BLOCK- D	128.56 SQM	G FLOOR
5	BLOCK- E	332 SQM	G +1

CONSULTANT :



MaRS Planning & Engineering Services Pvt. Ltd.
 287/C Yash Padm Beside Hill Top Motors Ashok Nagar,
 Ranchi- 834002, Jharkhand, India.
Jharkhand@marsconsultancy.com

SCHOOL NAME : +2 H.S AMARAPARA

DISTRICT : -PAKUR

BLOCK : -AMARAPARA

FORWARDED BY : MaRS

PAGE : A4