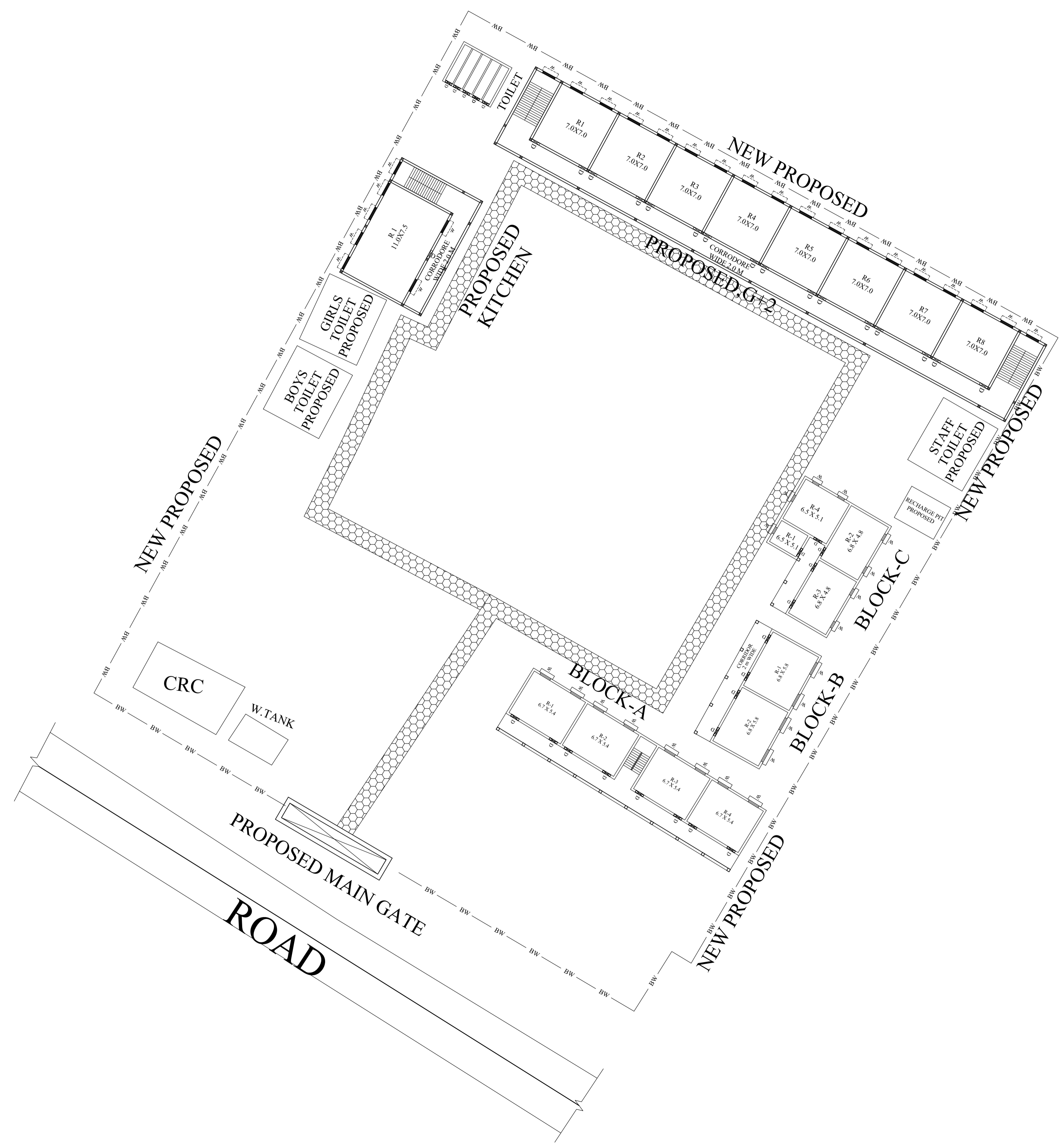
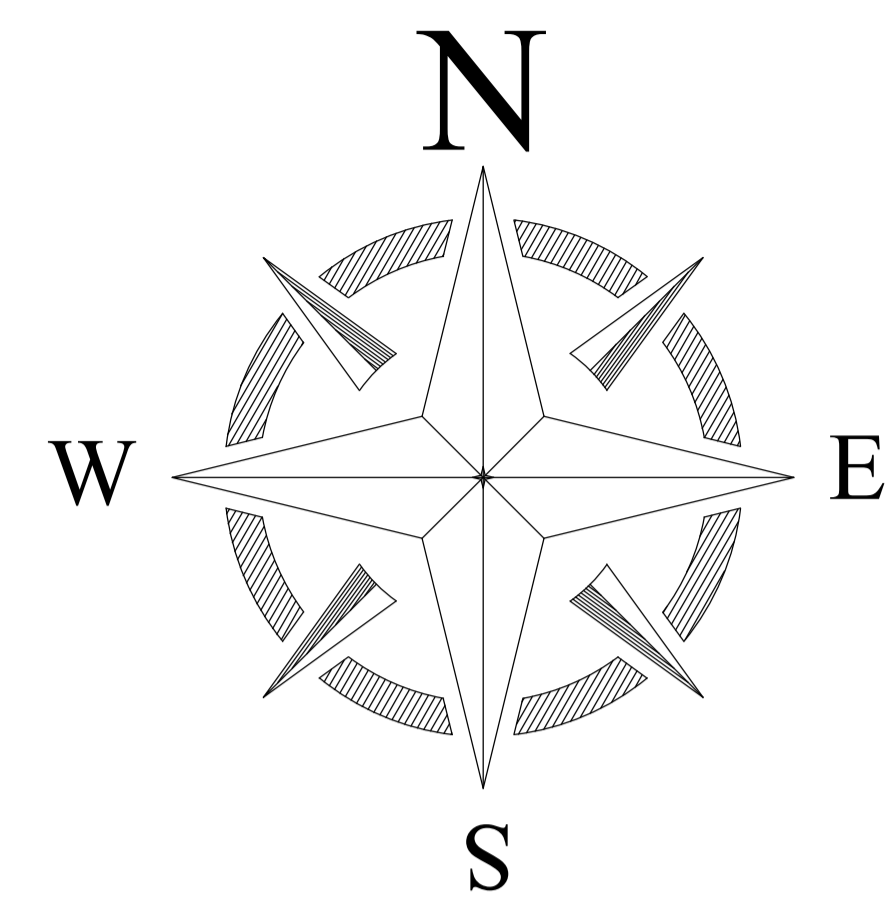


PROPOSED SITE PLAN OF SCHOOL



TOTAL AREA:-6442.5268 SQM



BLOCK NO	BLOCK NAME	AREA(In M)	TYPE
1	BLOCK - A	243.20 SQM	G FLOOR
2	BLOCK - B	45.30 SQM	G FLOOR
3	BLOCK- C	137.38 SQM	G FLOOR
4	TOILET	30.50 SQM	G FLOOR

CONSULTANT :



MaRS Planning & Engineering Services Pvt. Ltd.
 287/C Yash Padm Beside Hill Top Motors Ashok Nagar,
 Ranchi- 834002, Jharkhand, India.
Jharkhand@marsconsultancy.com

SCHOOL NAME : UPGRADE GOVT RA H.S MAHULBANA

DISTRICT : -DUMKA	PAGE : A4
BLOCK : - RANISHWAR	
FORWARDED BY : MaRS	