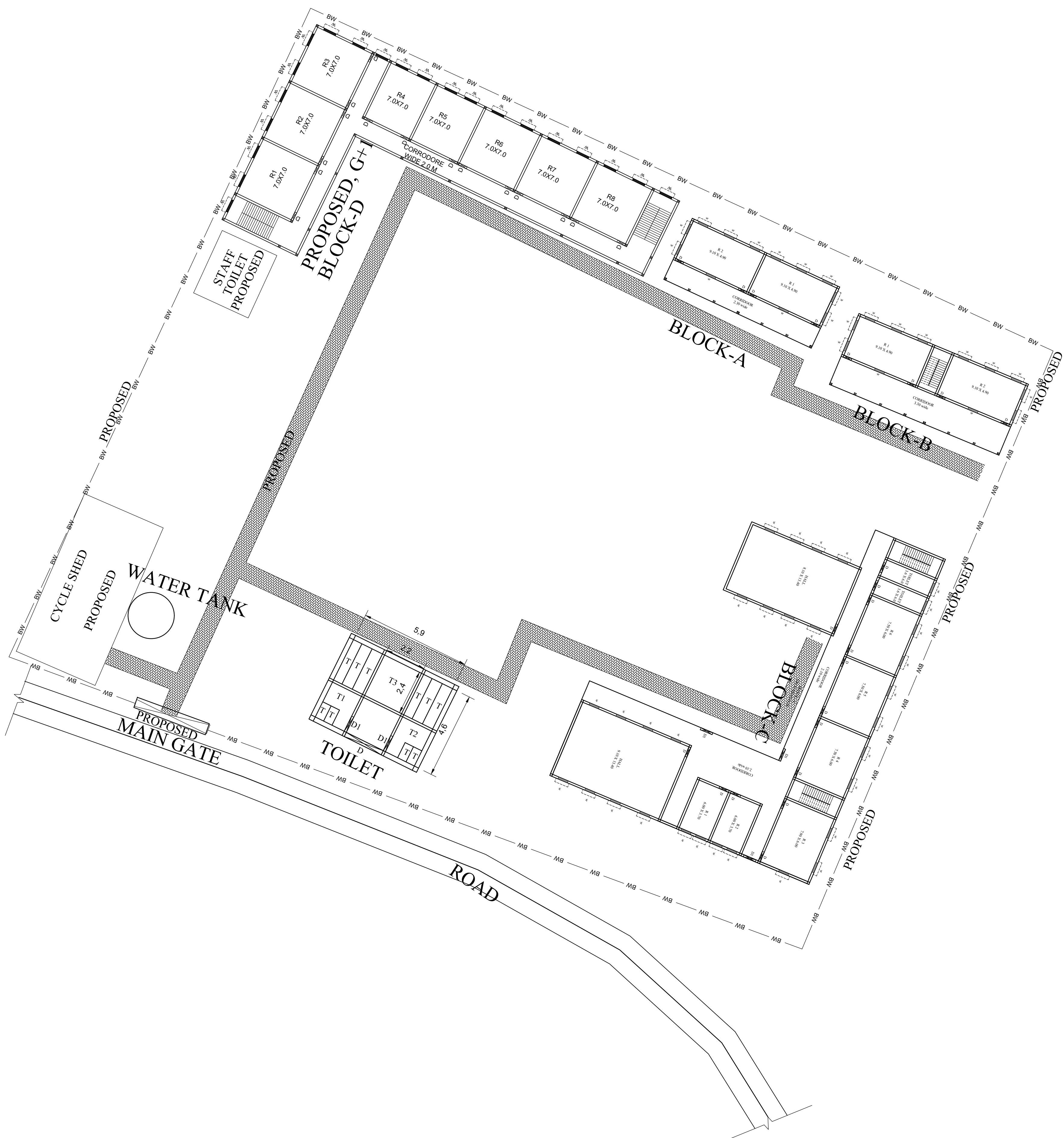
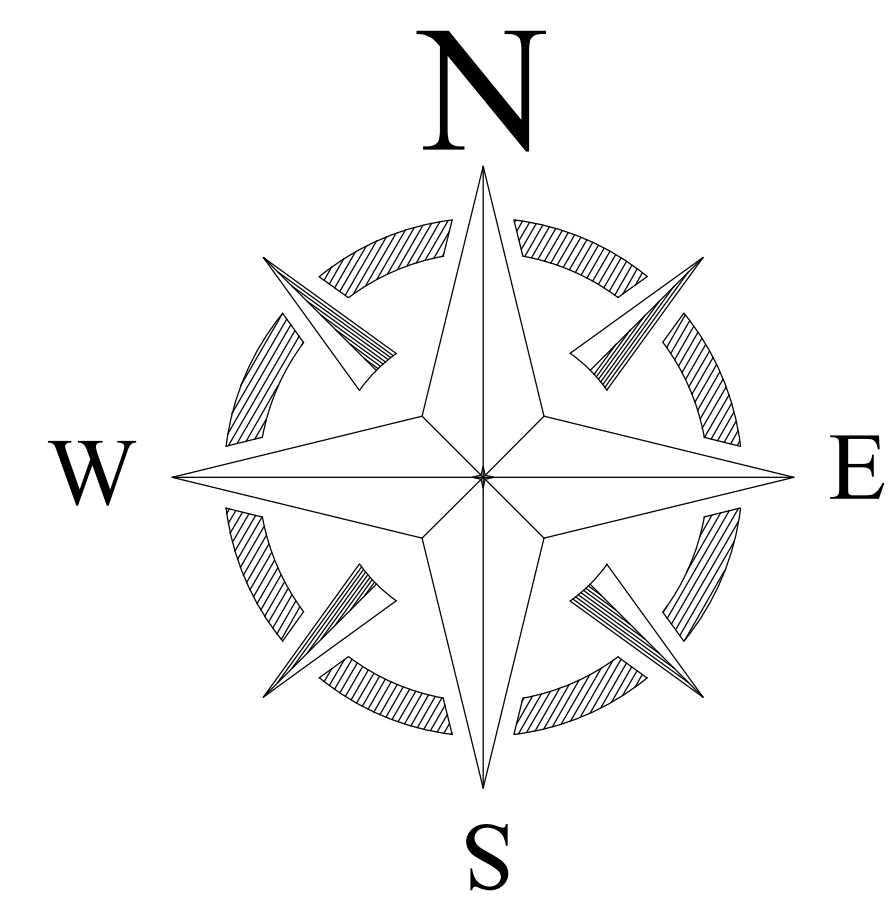


PROPOSED SITE PLAN OF SCHOOL



TOTAL LAND AREA=7681.12 SQM



LEGENDS

BLOCK NO	BLOCK NAME	AREA	TYPE
1	BLOCK - A	148.75 SQM	G FLOOR
2	BLOCK - B	191.53 SQM	G FLOOR
3	BLOCK - C	766.28 SQM	G FLOOR
4	TOILET	32.64 SQM	G FLOOR

CONSULTANT :



MaRS Planning & Engineering Services Pvt. Ltd.  
 287/C Yash Padm Beside Hill Top Motors Ashok Nagar,  
 Ranchi- 834002, Jharkhand, India.  
[Jharkhand@marsconsultancy.com](mailto:Jharkhand@marsconsultancy.com)

SCHOOL NAME : GOVT +2 H.S RAMGARH

DISTRICT : -DUMKA

BLOCK : - RAMGARH

FORWARDED BY : MaRS

PAGE : A4