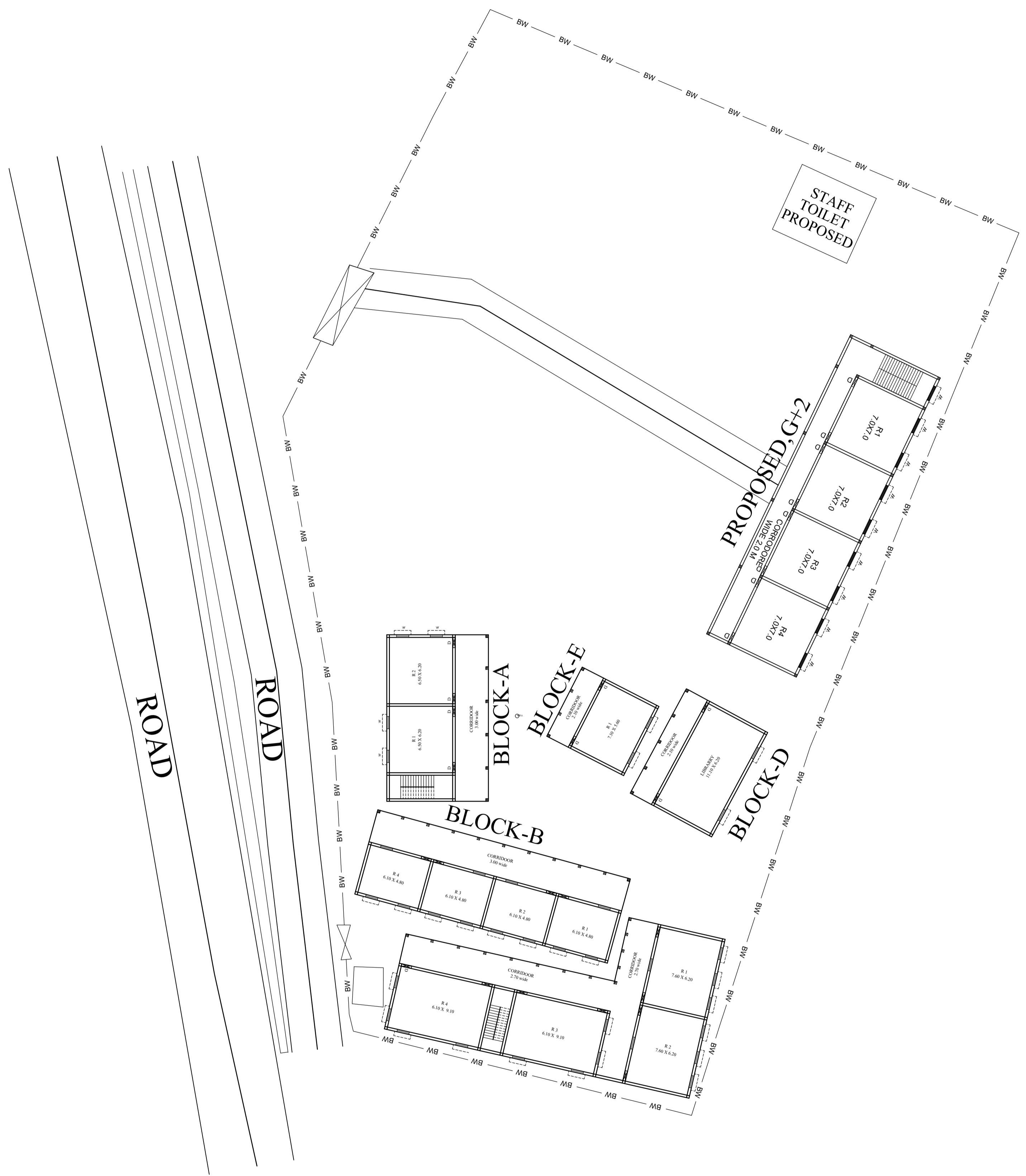
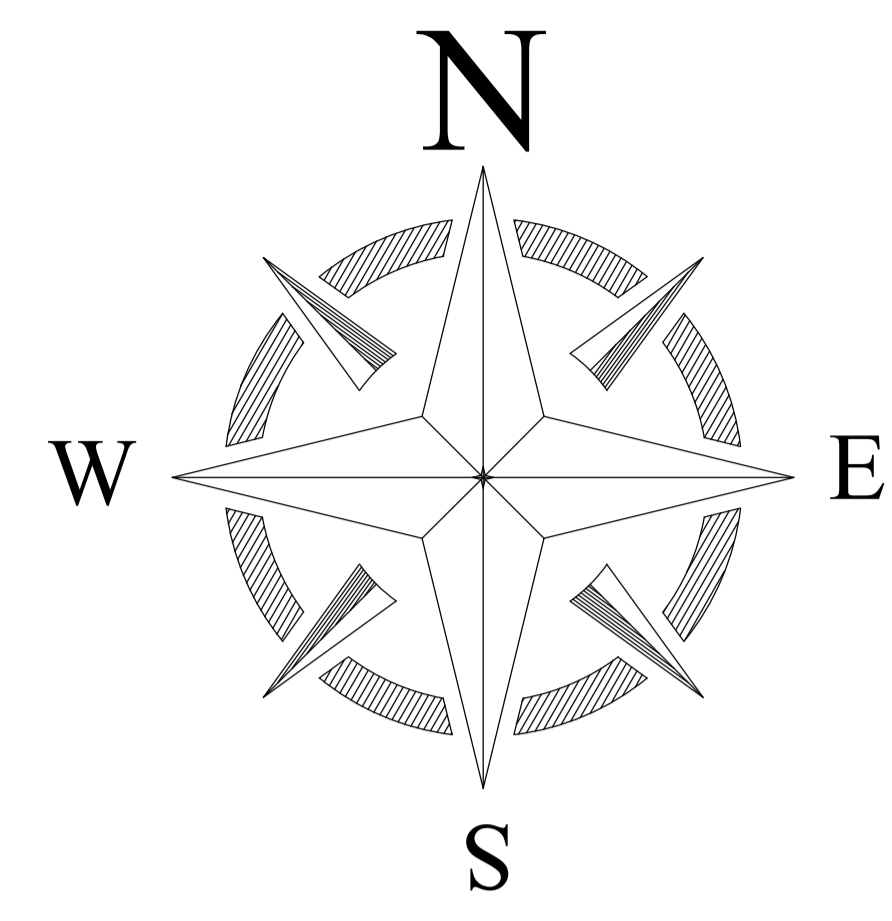


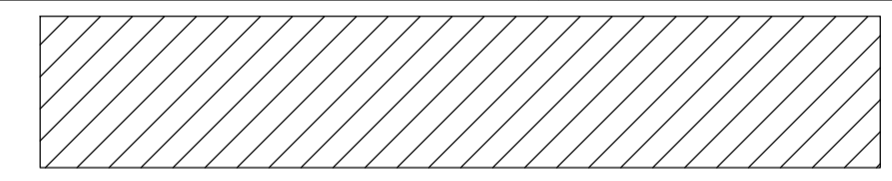
# PROPOSED SITE PLAN OF SCHOOL



TOTAL AREA 5271.8721 SQM



## LEGENDS

BLOCK NO	BLOCK NAME	AREA(In M)	TYPE
1	BLOCK - A	162.18 SQM	G FLOOR
2	BLOCK - B	219.30 SQM	G FLOOR
3	BLOCK- C	354.00 SQM	G FLOOR
4	BLOCK- D	105.00 SQM	G FLOOR
5	BLOCK- E	64.22 SQM	G FLOOR
6	DEMOLISH		

CONSULTANT :



**MaRS Planning & Engineering Services Pvt. Ltd.**  
 287/C Yash Padm Beside Hill Top Motors Ashok Nagar,  
 Ranchi- 834002, Jharkhand, India.  
[Jharkhand@marsconsultancy.com](mailto:Jharkhand@marsconsultancy.com)

**SCHOOL NAME : GOVT +2RANI SONAWATI H.S NONIHAT**

DISTRICT : -DUMKA

BLOCK : - RAMGARH

FORWARDED BY : MaRS

PAGE : A4