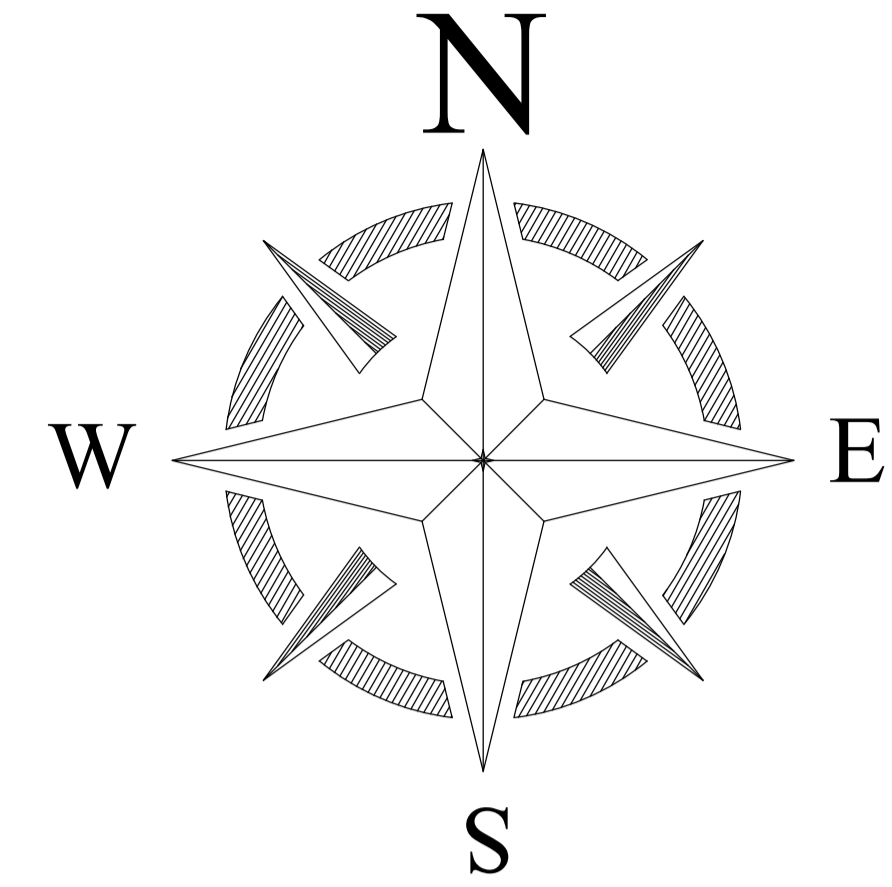
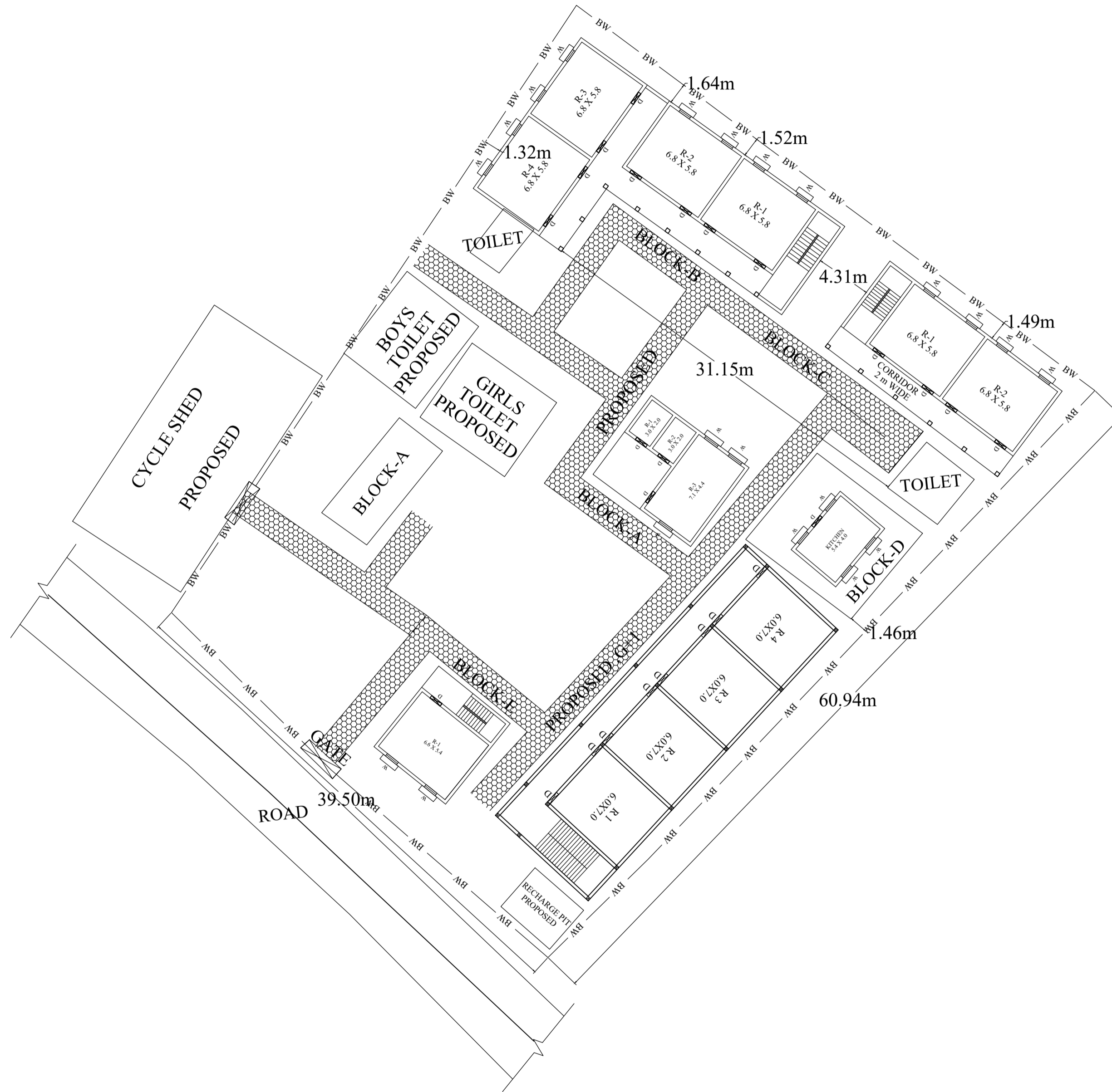


PROPOSED SITE PLAN OF SCHOOL



BLOCK NO	BLOCK NAME	AREA(In M)	TYPE
1	BLOCK - A	71.44 SQM	G FLOOR
2	BLOCK - B	260.82 SQM	G FLOOR
3	BLOCK- C	138.61 SQM	G FLOOR
4	BLOCK- D	26.55 SQM	G FLOOR
5	BLOCK- E	56.80 SQM	G FLOOR
5	BLOCK- E		

CONSULTANT :



MaRS Planning & Engineering Services Pvt. Ltd.
 287/C Yash Padm Beside Hill Top Motors Ashok Nagar,
 Ranchi- 834002, Jharkhand, India.
Jharkhand@marsconsultancy.com

SCHOOL NAME : GOVT .M.S.KARUDIH

DISTRICT : -DUMKA

BLOCK : -GOPIKANDAR

FORWARDED BY : MaRS

PAGE : A4

TOTAL AREA 2633.8723 SQM