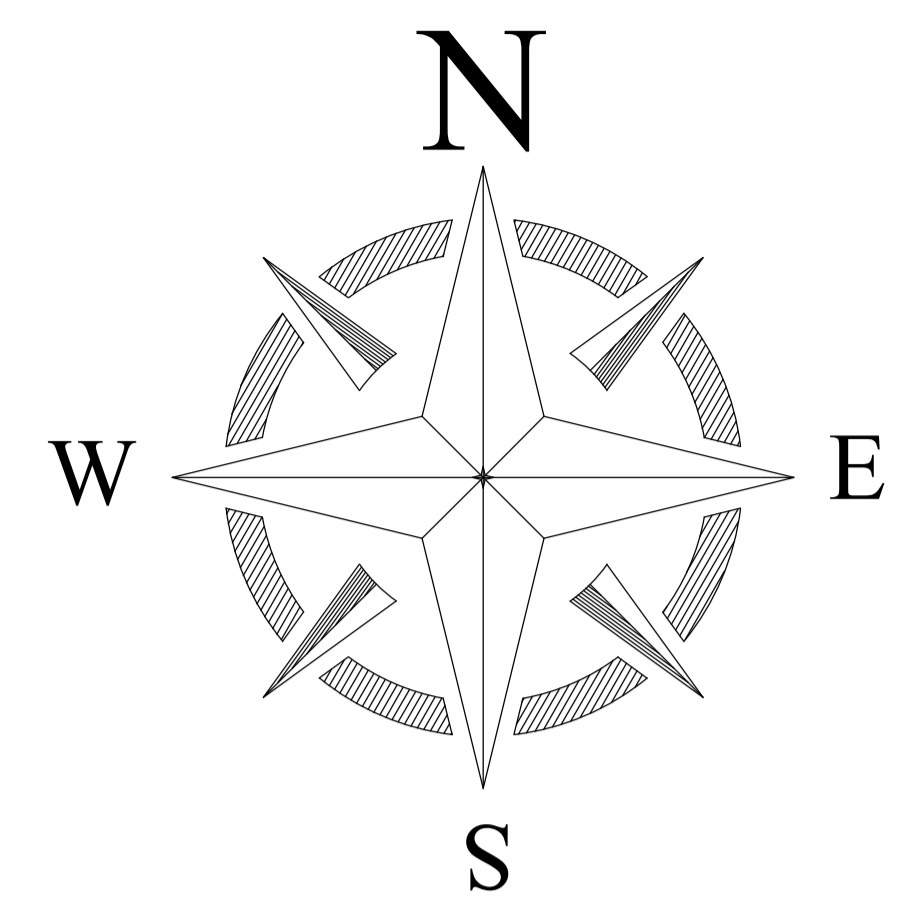
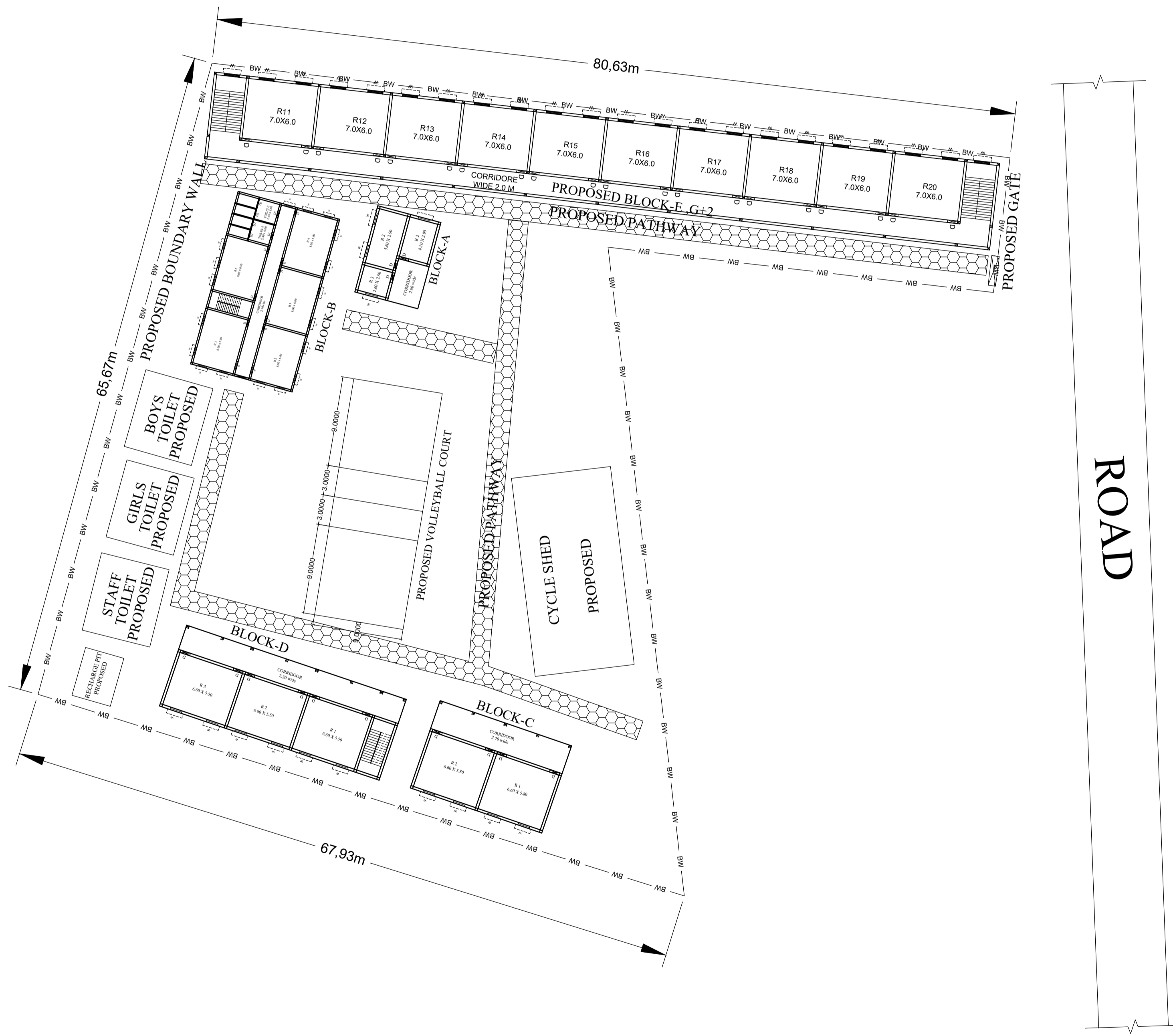


# PROPOSED SITE PLAN OF SCHOOL



BLOCK NO	BLOCK NAME	AREA(In M)	TYPE
1	BLOCK - A	58.62 SQM	G FLOOR
2	BLOCK - B	387.31 SQM	G FLOOR
3	BLOCK- C	129.03 SQM	G FLOOR
4	BLOCK- D	198.78 SQM	G FLOOR
TOTAL AREA		4267.7254 SQM	

CONSULTANT :



**MaRS Planning & Engineering Services Pvt. Ltd.**  
 287/C Yash Padm Beside Hill Top Motors Ashok Nagar,  
 Ranchi- 834002, Jharkhand, India.  
[Jharkhand@marsconsultancy.com](mailto:Jharkhand@marsconsultancy.com)

**SCHOOL NAME : UPG GOVT H.S DHAKA**

DISTRICT : -DUMKA	PAGE : A4
BLOCK : -SHIKARIPARA	
FORWARDED BY : MaRS	