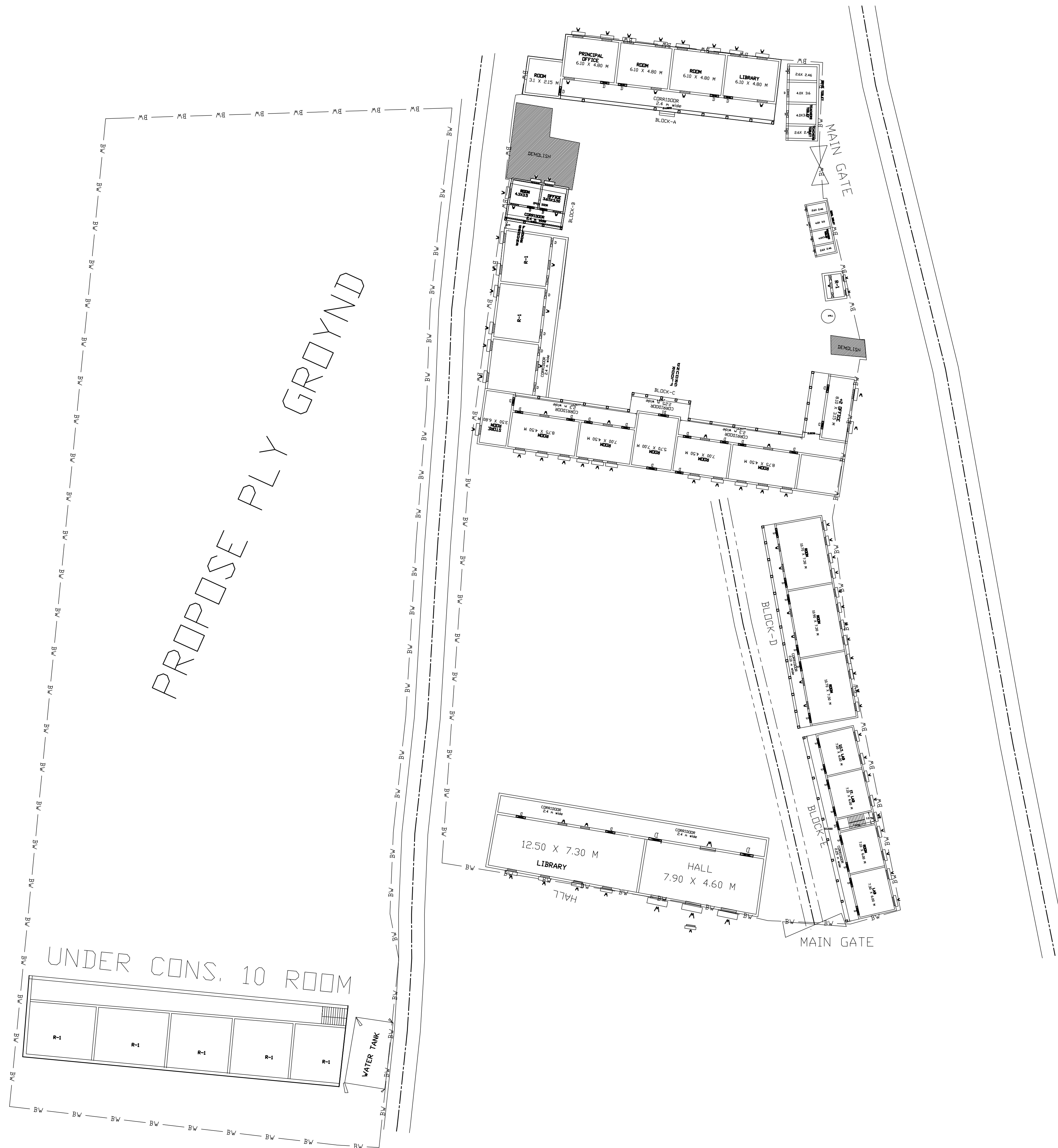
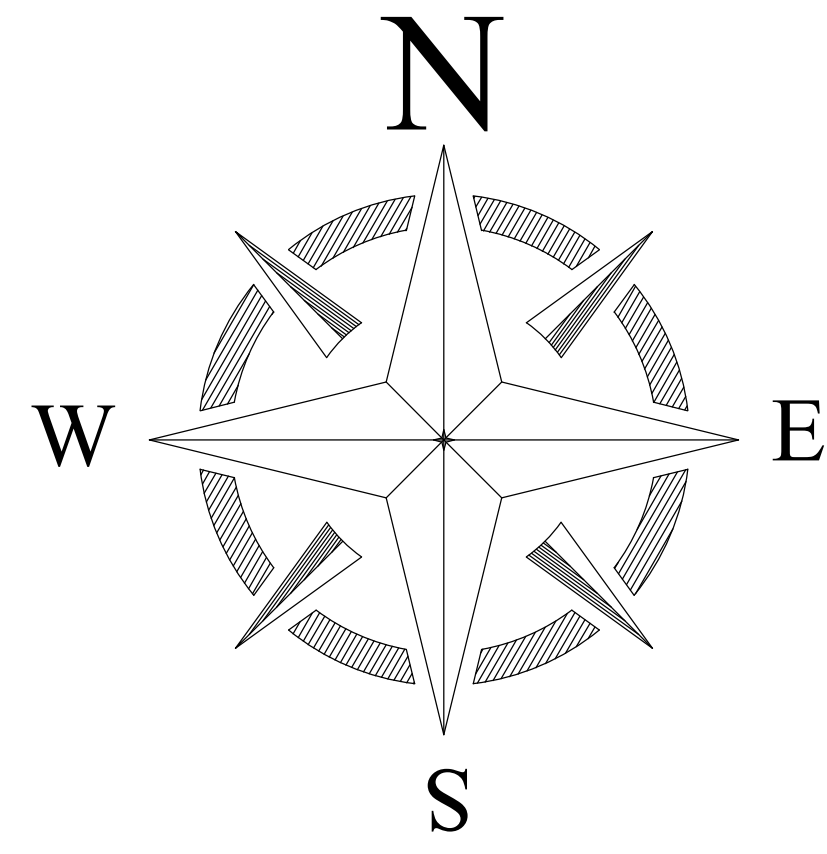


PROPOSED SITE PLAN OF SCHOOL



TOTAL LAND AREA-4836.64M



BLOCK NO	BLOCK NAME	AREA(In m)	TYPE
1	BLOCK - A	206.38	G. FLOOR
2	BLOCK - B	55.68	G. FLOOR
3	BLOCK - C	414.0	G. FLOOR
4	BLOCK - D	329.6	G. FLOOR
5	BLOCK - E	496.5	G+1FLOOR
6	HALL	132.5	G. FLOOR
7	LIBRARY	60.48	G. FLOOR
8	TOILET-1	57.73	G. FLOOR
9	TOILET-2	57.73	G. FLOOR

CONSULTANT :



MaRS Planning & Engineering Services Pvt. Ltd.  
 287/C Yash Padm Beside Hill Top Motors Ashok Nagar,  
 Ranchi- 834002, Jharkhand, India.  
[Jharkhand@marsconsultancy.com](mailto:Jharkhand@marsconsultancy.com)

SCHOOL NAME : T A P +2 H.S TOPCHANCHI

DISTRICT : - DHANBAD

BLOCK : -TOPCHACHI

FORWARDED BY : MaRS