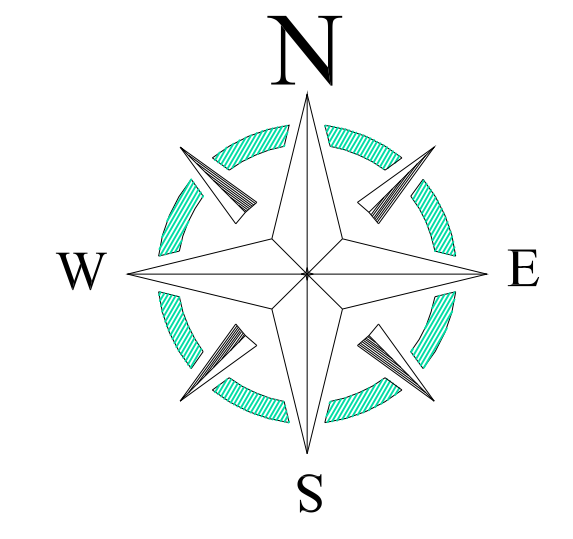
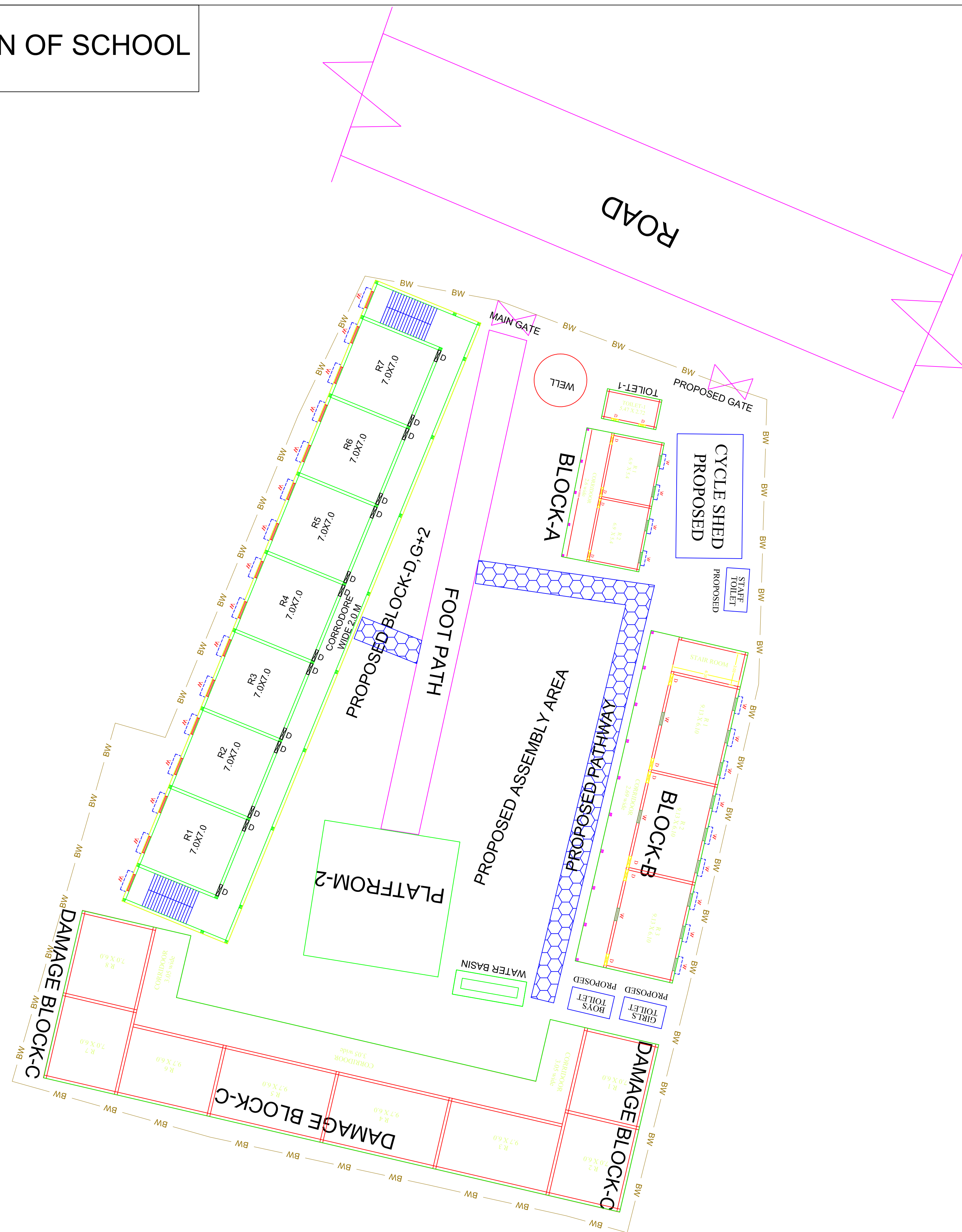


PROPOSED SITE PLAN OF SCHOOL



LEGENDS

BLOCK NO	BLOCK NAME	AREA(In m)	TYPE
1	BLOCK - A	127.1	G. FLOOR
2	BLOCK - B	294.3	G. FLOOR
3	BLOCK - C	1151.4	G.+1 FLOOR
4	BLOCK - D	1683	G+2
5	BLOCK - E	134.5	G. FLOOR
6	TOILET-1	19.2	G. FLOOR
7	TOILET-2	12.9	G. FLOOR
8	TOILET-3	12.9	G. FLOOR
9	WELL	92.1	G. FLOOR
10	WATER BASIN	2.1	G. FLOOR
11	PLATFORM-1	32.0	G. FLOOR
12	PLATFORM-2	6.2	G. FLOOR

CONSULTANT :



MaRS Planning & Engineering Services Pvt. Ltd.  
 287/C Yash Padm Beside Hill Top Motors Ashok Nagar,  
 Ranchi- 834002, Jharkhand, India.  
[Jharkhand@marsconsultancy.com](mailto:Jharkhand@marsconsultancy.com)

SCHOOL NAME : RAM RATAN HIGH SCHOOL ,  
 DHORI

DISTRICT : - BOKARO

BLOCK : - BERMO

FORWARDED BY : MaRS

PAGE : A1