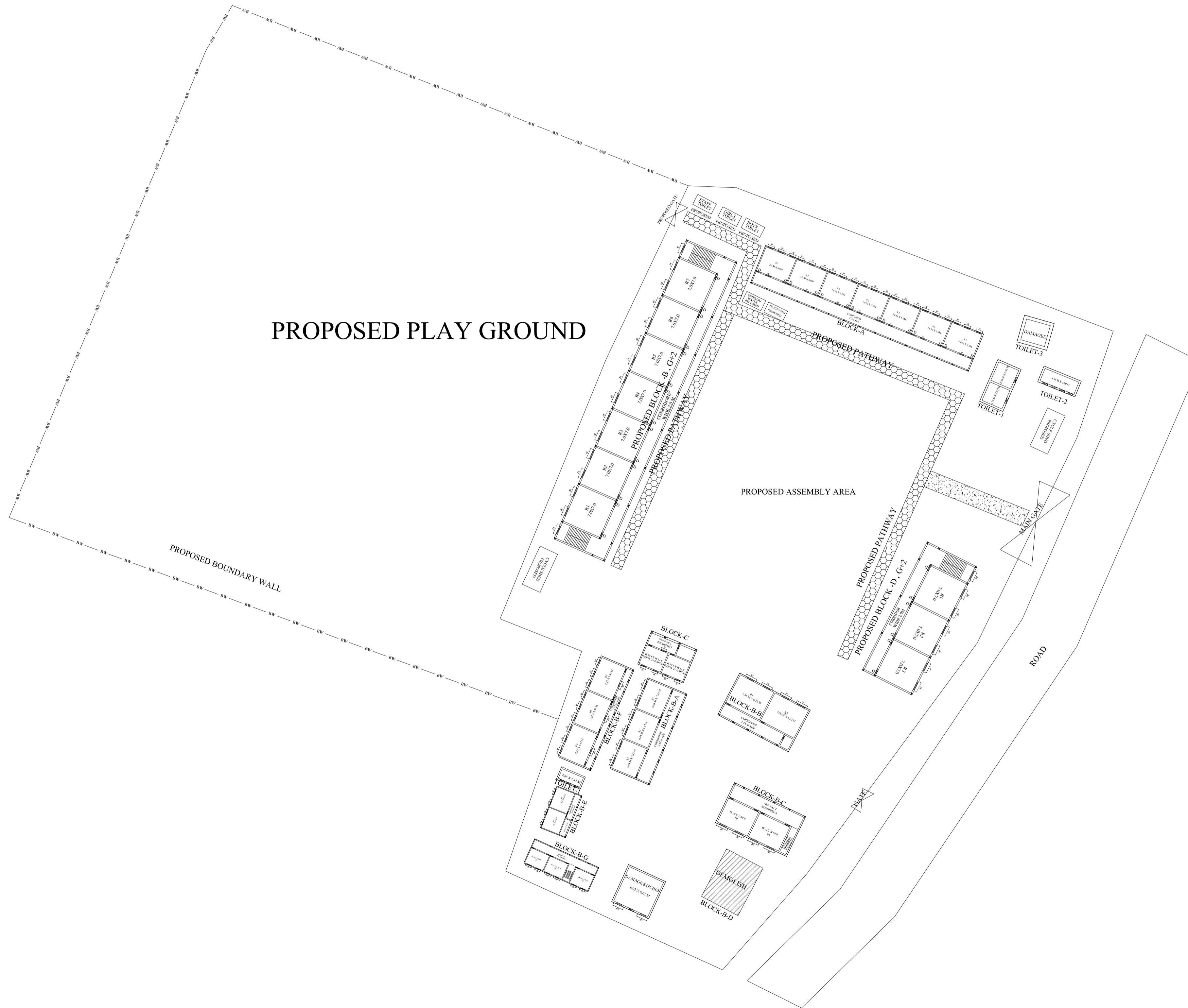
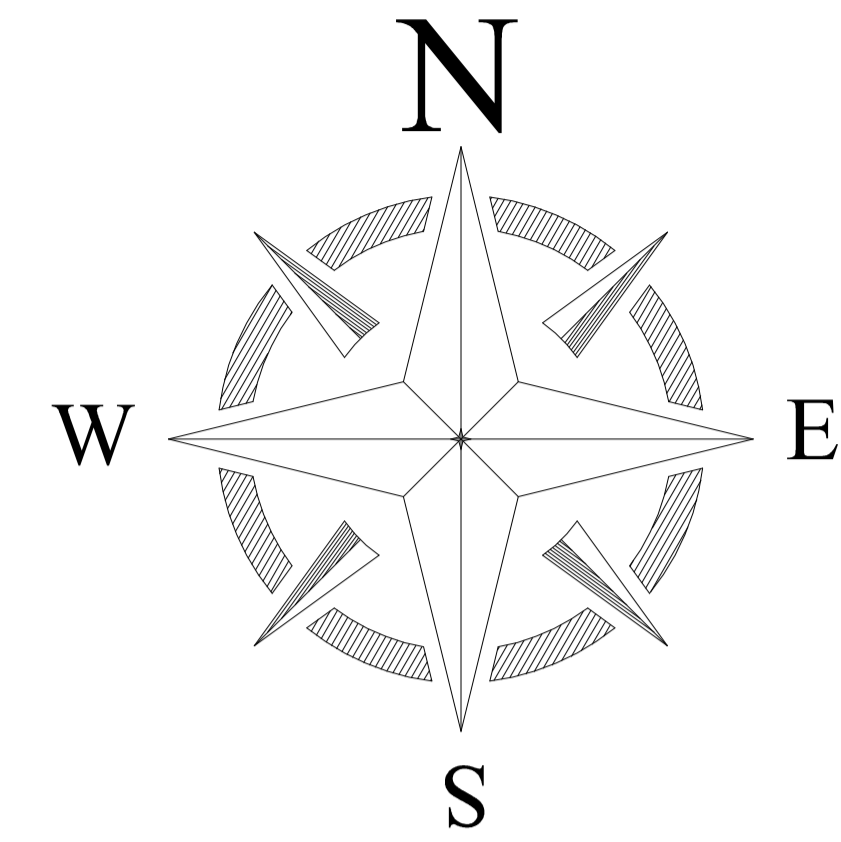


PROPOSED SITE PLAN OF SCHOOL



GROUND FLOOR



NOTES

BLOCK NO	BLOCK NAME	AREA(In m)	TYPE
1	BLOCK - A	521.6	G. FLOOR
2	BLOCK - B	165.3	G. FLOOR
3	BLOCK - C	88.6	G. FLOOR
4	BLOCK - B-A	188.6	G. FLOOR
5	BLOCK-B-B	149.7	G. FLOOR
6	BLOCK-B-C	142.1	G. FLOOR
7	BLOCK-B-D	98.3	G. FLOOR
8	BLOCK-B-E	153.5	G. FLOOR
9	BLOCK-B-F	169.2	G. FLOOR
10	BLOCK-B-G	205.5	G. FLOOR
11	TOILET-1	21.0	G. FLOOR
12	TOILET-2	6.2	G. FLOOR
13	TOILET-2	12.5	G. FLOOR
14	TOILET-4	21.0	G. FLOOR
15	TOILET-1	10.6	G. FLOOR

CONSULTANT :



MaRS Planning & Engineering Services Pvt. Ltd.
 287/C Yash Padm Beside Hill Top Motors Ashok Nagar,
 Ranchi- 834002, Jharkhand, India.
Jharkhand@marsconsultancy.com

SCHOOL NAME : K.N-2 HIGH SCHOOL HARNAD

DISTRICT : - BOKARO

BLOCK : -KASMAR

FORWARDED BY : MaRS

PAGE : A1