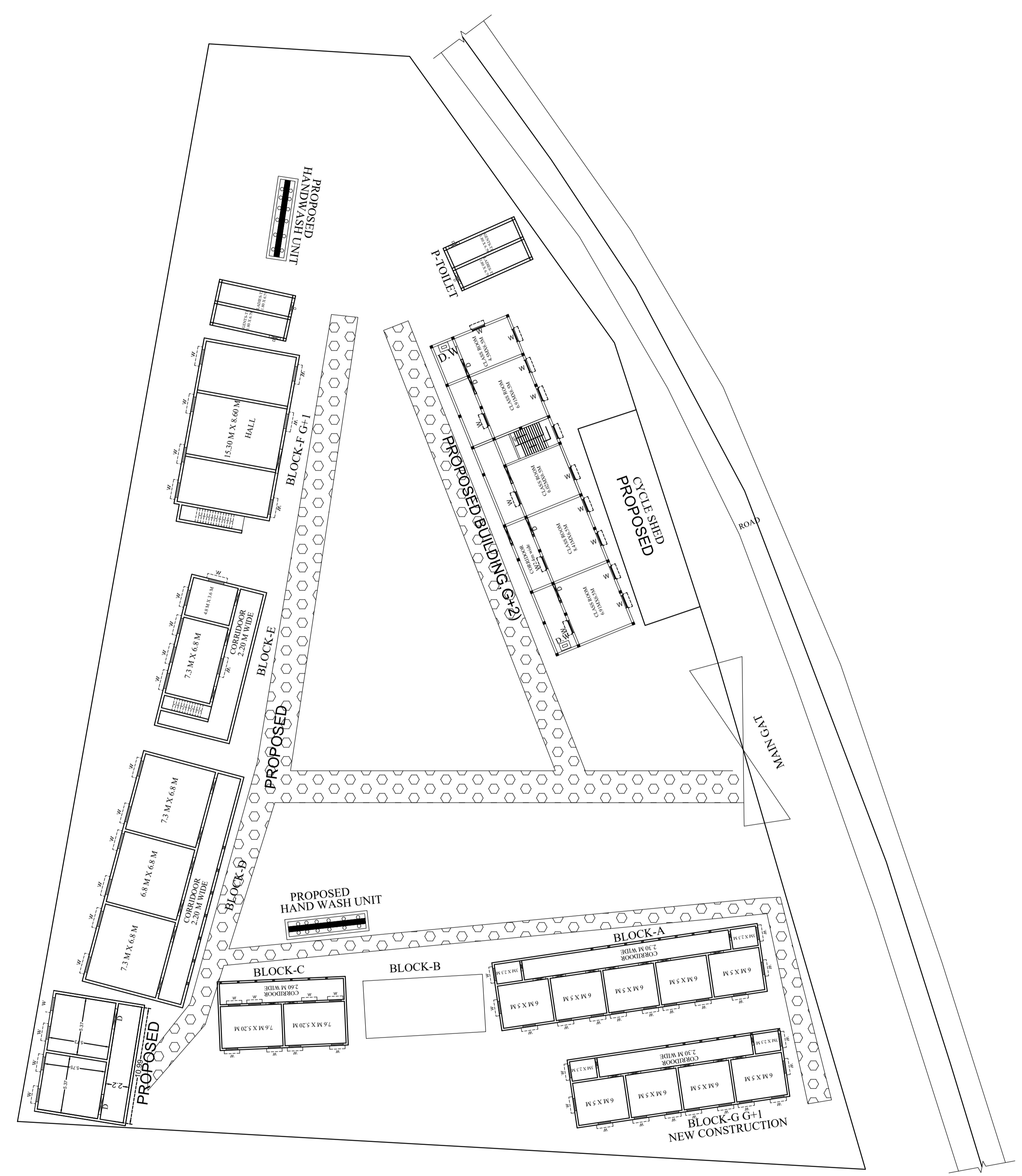
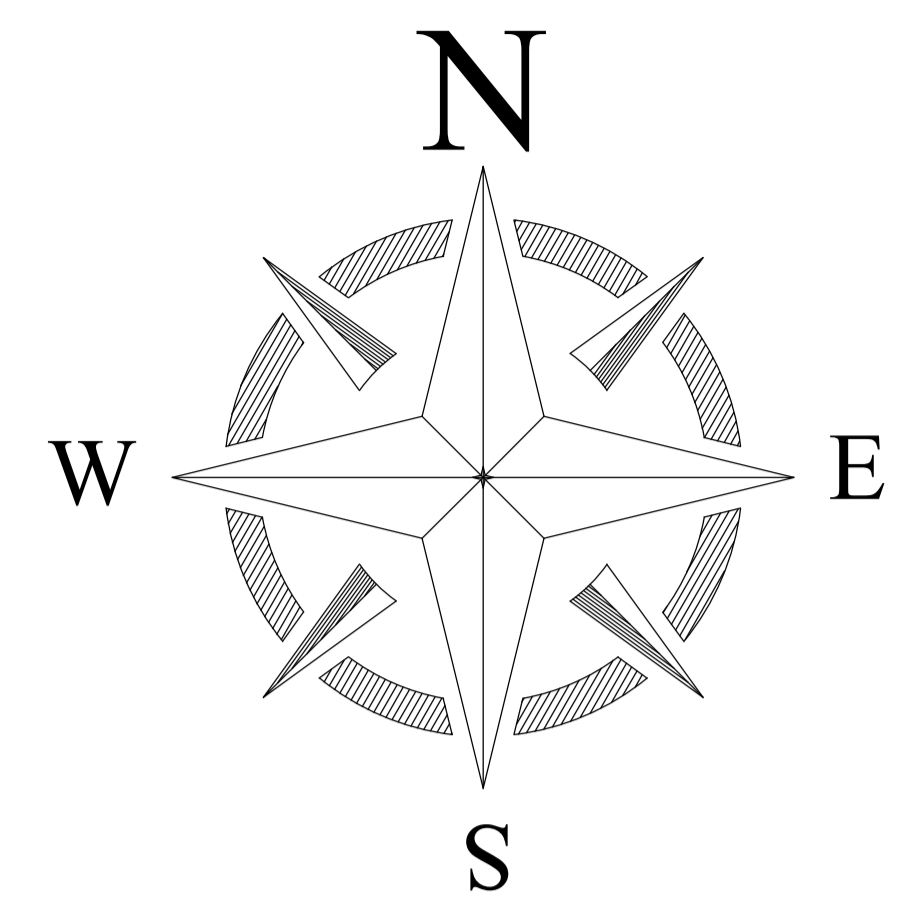


PROPOSED SITE PLAN OF SCHOOL



TOTAL LAND AREA-5480.8 SQM



LEGENDS

BLOCK NO	BLOCK NAME	AREA(In m)	TYPE
1	BLOCK - A	253.57	G. FLOOR
2	BLOCK - B	960	G. FLOOR
3	BLOCK - C	136.37	G. FLOOR
4	BLOCK - D	218.40	G. FLOOR
5	BLOCK - E	43.70	G. FLOOR
6	BLOCK - F	297.55	G+1 FLOOR
7	TOILET	31.8	G. FLOOR
8.	BLOCK-G	450	G+1 FLOOR

CONSULTANT :



MaRS Planning & Engineering Services Pvt. Ltd.
 287/C Yash Padm Beside Hill Top Motors Ashok Nagar,
 Ranchi- 834002, Jharkhand, India.
Jharkhand@marsconsultancy.com

SCHOOL NAME : R.K+2 H.S NARAYANPUR

DISTRICT : -JAMTARA

BLOCK : -NARAYANPUR

FORWARDED BY : MaRS

PAGE : A4