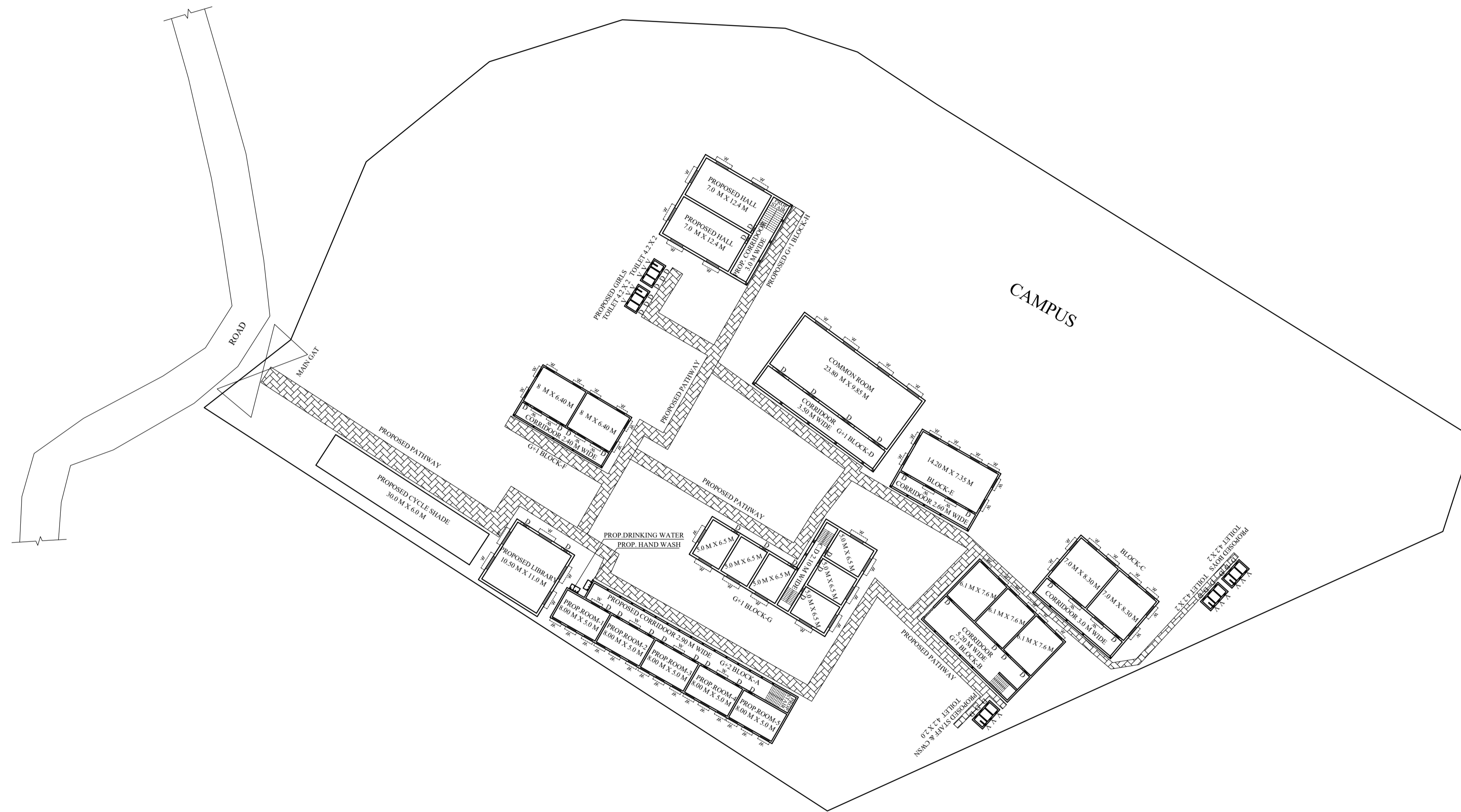
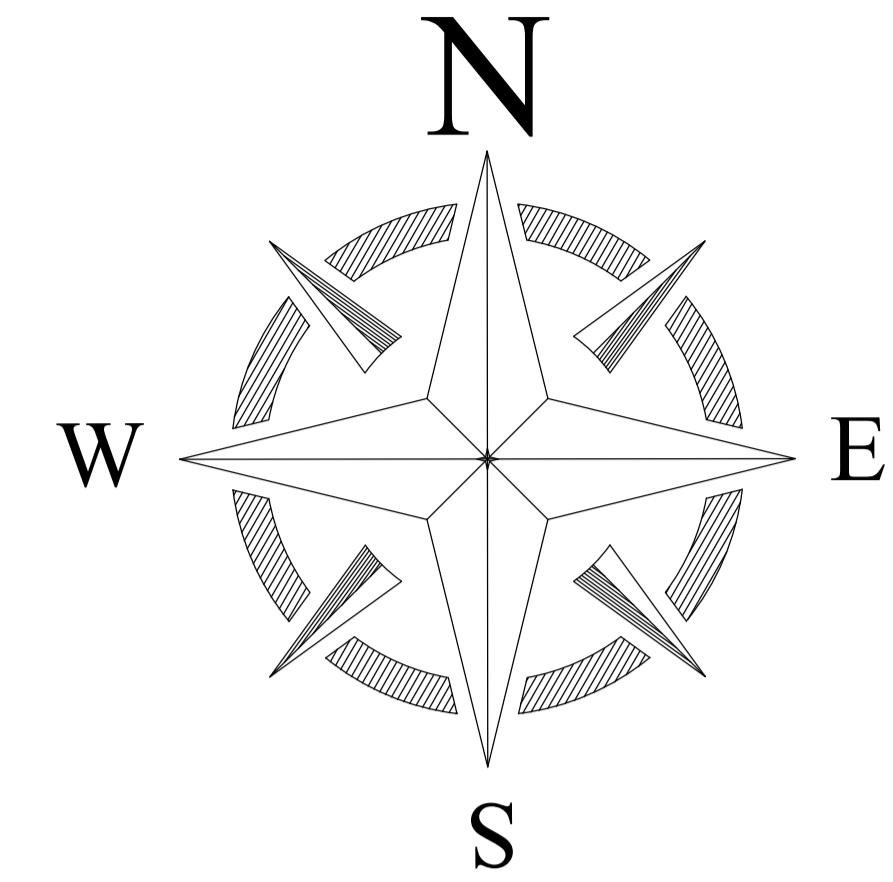


# PROPOSED SITE PLAN OF SCHOOL



## LEGENDS

BLOCK NO	BLOCK NAME	AREA(In m)	TYPE
1	BLOCK - A	325.87	G. FLOOR
2	BLOCK - B	523.0	G+1 FLOOR
3	BLOCK - C	129.67	G. FLOOR
4	BLOCK - D	251.36	G. FLOOR
5	BLOCK - E	151.20	G. FLOOR
6	BLOCK - F	159.96	G. FLOOR
7	TOILET	31.8	G. FLOOR

CONSULTANT :



**MaRS Planning & Engineering Services Pvt. Ltd.**  
 287/C Yash Padm Beside Hill Top Motors Ashok Nagar,  
 Ranchi- 834002, Jharkhand, India.  
[Jharkhand@marsconsultancy.com](mailto:Jharkhand@marsconsultancy.com)

**SCHOOL NAME : RAJKIYAKRIT GULABA ROY GUTGUTIA +2 H.S**

DISTRICT : -JAMTARA

BLOCK : -KUNDAHIT

FORWARDED BY : MaRS

PAGE : A4