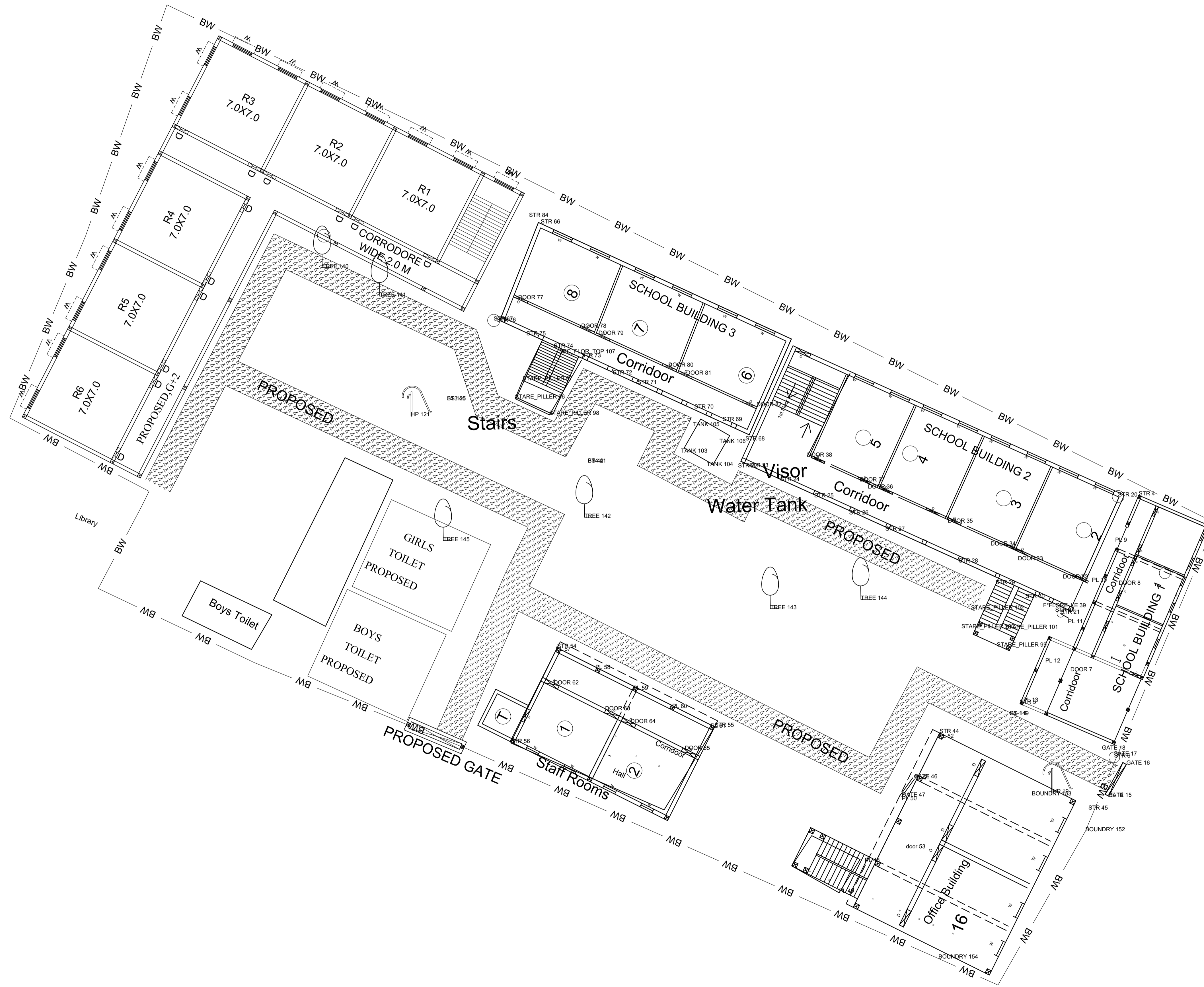
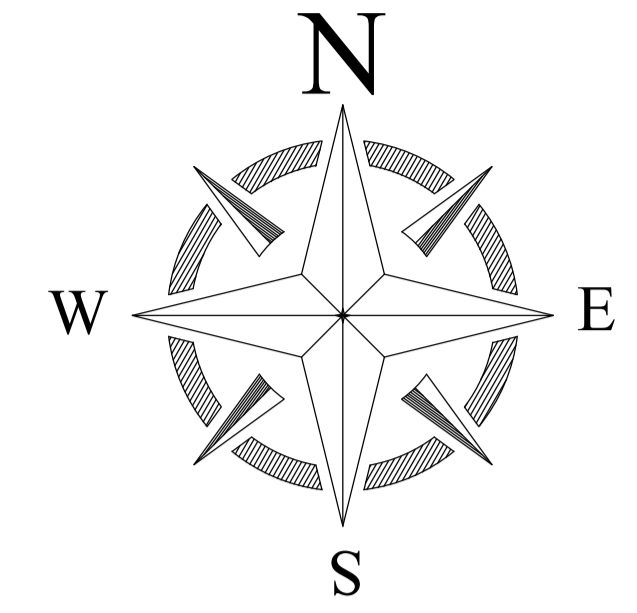


PROPOSED SITE PLAN MIDDLE SCHOOL BARKAKANA (PATRATU)



LEGENDS

| BLOCK NO | BLOCK NAME | AREA(m) | TYPE |
|----------|--------------------|---------|----------|
| 1 | SCHOOL BUILDING -1 | 221.55 | G. +1 |
| 2 | SCHOOL BUILDING -2 | 262.20 | G. +1 |
| 3 | SCHOOL BUILDING -3 | 237.35 | G. +1 |
| 4 | OFFICE BUILDING | 175.27 | G. FLOOR |
| 5 | STAFF BUILDING | 110.28 | G. FLOOR |
| 6 | HALL | 235.46 | G. +1 |

PROPOSED DRAWING

CONSULTANT : MaRS Planning & Engineering Services Pvt. Ltd.
 287/C Yash Padm Beside Hill Top Motors Ashok Nagar,
 Ranchi- 834002, Jharkhand, India.
Jharkhand@marsconsultancy.com

TITLE : - Middle School barkakana

BLOCK: PATRATU

FORWARDED BY : MaRS